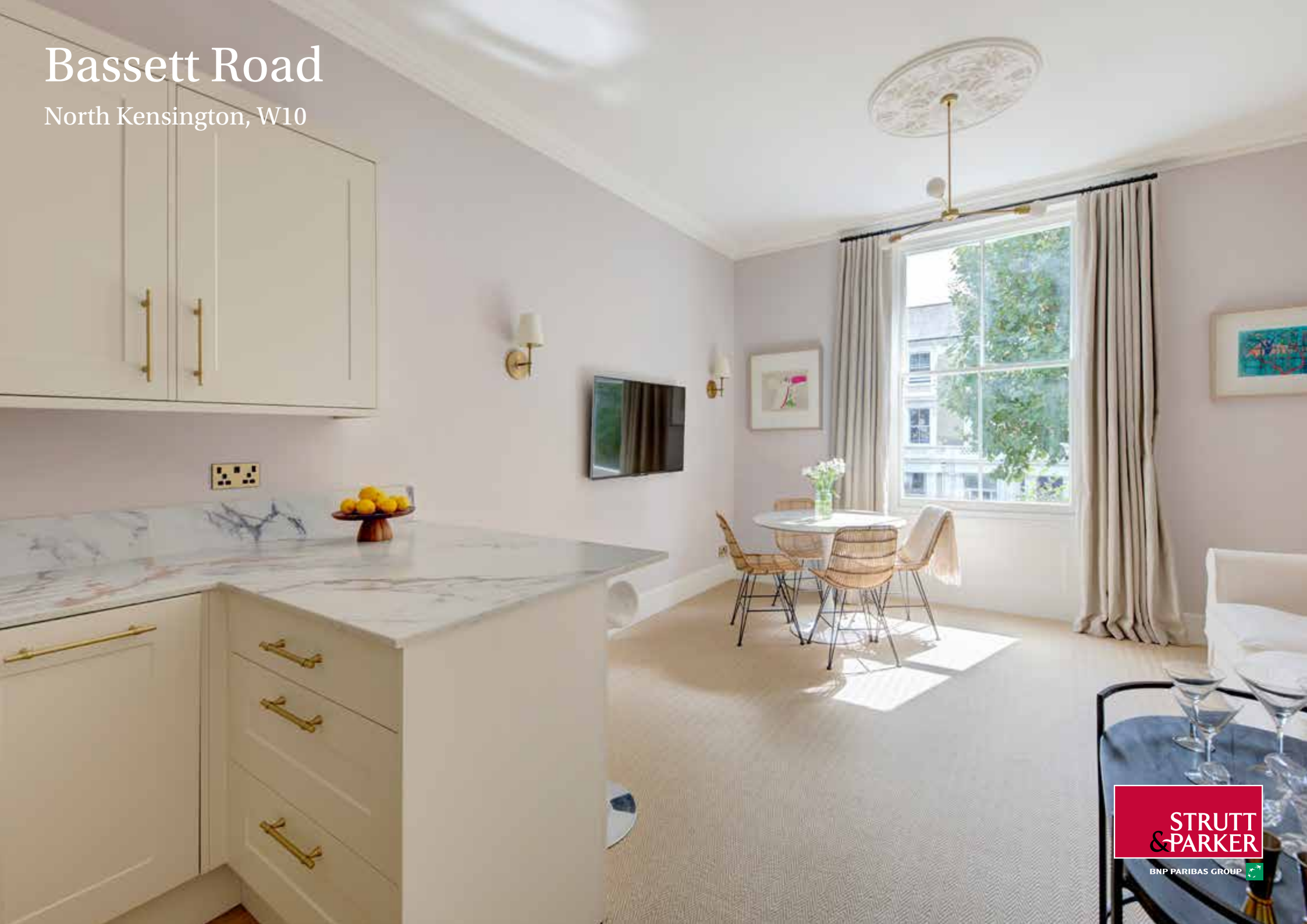


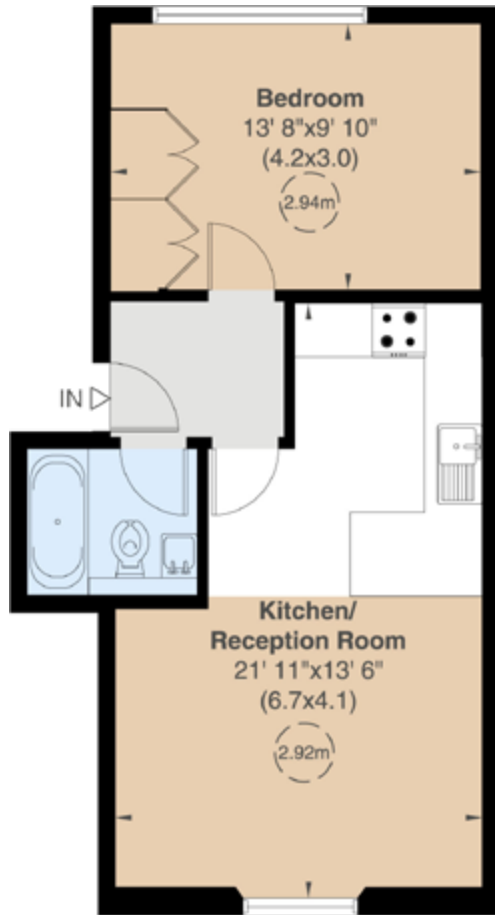
Bassett Road

North Kensington, W10



**STRUTT
& PARKER**

BNP PARIBAS GROUP



First Floor



An immaculate one bedroom first floor flat.

This best in class first floor apartment is situated within an impressive double fronted villa on Bassett Road.

Featuring an abundance of natural light, high ceilings and period features, the flat comprises a beautiful south facing reception room, impeccably refurbished kitchen and bathroom, and a large rear facing bedroom with bespoke wardrobes and built in workstation.

Bassett Road is a wide, tree lined and highly sought after address which runs west of Ladbroke Grove and therefore benefits from the excellent restaurants, shopping and transport facilities of Portobello Road, Westbourne Grove and Holland Park.

Floorplans

Gross internal area 456 sq ft (42 sq m)
For identification purposes only.

General

Tenure: Share of Freehold with an underlying lease expiring 28/09/2123

Local Authority: The Royal Borough of Kensington and Chelsea

Service Charge: £2,017pa

Council Tax: Band D

EPC Rating: D

Parking: Residents' permit

Broadband: Is installed at the property

Asking Price: £675,000

Notting Hill

303 Westbourne Grove, London, W11 2QA

020 7221 1111

nottinghill@struttandparker.com

struttandparker.com

IMPORTANT NOTICE: Strutt & Parker gives notice that: 1. These particulars do not constitute an offer or contract or part thereof. 2. All descriptions, photographs and plans are for guidance only and should not be relied upon as statements or representations of fact. All measurements are approximate and not necessarily to scale. Any prospective purchaser must satisfy themselves of the correctness of the information within the particulars by inspection or otherwise. 3. Strutt & Parker does not have any authority to give any representations or warranties whatsoever in relation to this property (including but not limited to planning/building regulations), nor can it enter into any contract on behalf of the Vendor. 4. Strutt & Parker does not accept responsibility for any expenses incurred by prospective purchasers in inspecting properties which have been sold, let or withdrawn. 5. We are able to refer you to SPF Private Clients Limited ("SPF") for mortgage broking services, and to Alexander James Interiors ("AJI"), an interior design service. Should you decide to use the services of SPF, we will receive a referral fee from them of 25% of the aggregate of the fee paid to them by you for the arrangement of a mortgage and any fee received by them from the product provider. Should you decide to use the services of AJI, we will receive a referral fee of 10% of the net income received by AJI for the services they provide to you. 6. If there is anything of particular importance to you, please contact this office and Strutt & Parker will try to have the information checked for you. Photographs taken January 2025. Particulars prepared January 2025. Strutt & Parker is a trading style of BNP Paribas Real Estate Advisory & Property Management UK Limited



@struttandparker

Over 50 offices across England and Scotland, including Prime Central London

For the finer things in property.

