



Waterside

The Beach House, Beach Street, Deal, Kent

For the finer things in property.

**STRUTT
& PARKER**

BNP PARIBAS GROUP

The Beach House

101 Beach Street, Deal, Kent CT14 6JQ

A charming and well-appointed Grade II listed period house with captivating views, a stone's throw from the beach.

Deal town centre 0.1 mile, Deal station 0.4 mile (London St Pancras from 86 minutes), Sandwich 6.5 miles, A2 6.6 miles, Dover Priory station 9.3 miles (London St Pancras from 66 minutes), Canterbury 18 miles, Eurotunnel 22.7 miles

Entrance hall | Drawing room | Sitting room
Kitchen/dining room | Cloakroom | Principal bedroom with en suite shower room | 3 Further bedrooms, 1 with dressing room | Family bathroom | EPC rating D

The property

Grade II listed, The Beach House is a stylish period property situated in the heart of Deal's Conservation Area, with a collection of bright and airy rooms, each with direct sea views.

On the ground floor there is a comfortable sitting room with a brick-built fireplace and two large sash windows welcoming plenty of natural light and views across to the beach. There is also a modern kitchen which is well fitted with a range of wall and base units with wooden worktops; there is a central island with integrated appliances, and the room has ample space for a large dining table. A cloakroom is located by the stairs.

On the first floor, the well-proportioned drawing room provides further space in which to relax; the room is dual aspect with elevated sea and town views, and benefits from a window seat and a feature fireplace.

Also on the first floor are two bedrooms, one of which is a double with its own dressing room, with the most impressive views out to sea and

towards Deal Pier. The family bathroom is also found at this level.

The second floor provides two further bedrooms, including the principal bedroom, which has an en suite shower room and fitted wardrobes.

Outside

The Beach House opens directly onto Beach Street, with the town's famous shingle beach just across the road.

Parking is available in bays along Beach Street and in designated car parks, via a resident parking permit scheme. Full details of the scheme are available on the Dover District Council website.

Location

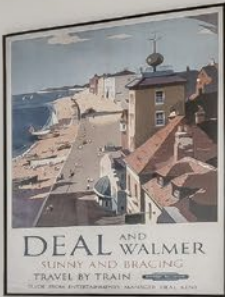
The property is situated a short distance from Deal's pier, which stretches for a quarter of a mile into the English Channel, and overlooking a beautiful stretch of pebble beach extending to Sandwich Bay in one direction and Kingsdown Cliffs in the other. The property is enviably situated within walking distance of the picturesque and quaint town centre which has an award-winning High Street with a good selection of independent boutique shopping, cafés, public houses and restaurants.

The neighbouring towns of Sandwich, Dover and Canterbury are easily accessed via the A2 and A258 and together provide a comprehensive range of services. There is a good selection of state schools, including Sandown School, Deal Parochial C of E Primary School and Goodwin Academy, together with some well-regarded independent schools including Northbourne Park, Dover College, St Faith's at Ash and St Lawrence College.

Deal station provides direct High Speed routes to London, whilst Dover Priory offers a journey time of just over an hour to London St Pancras. Access to the Continent is excellent via the Port of Dover and Eurotunnel.





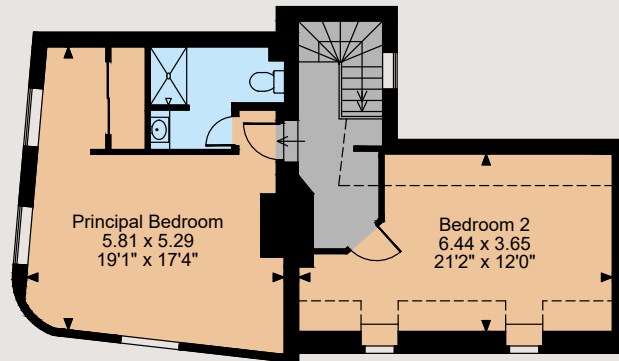
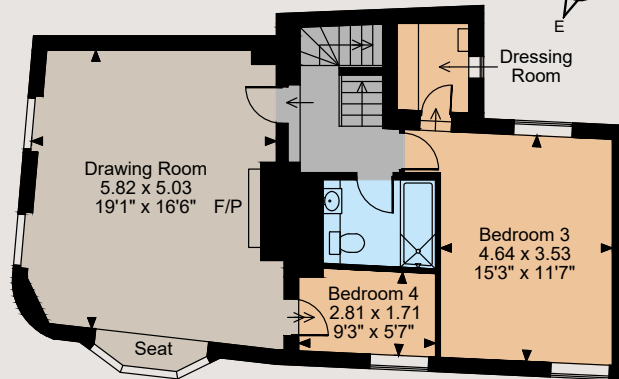
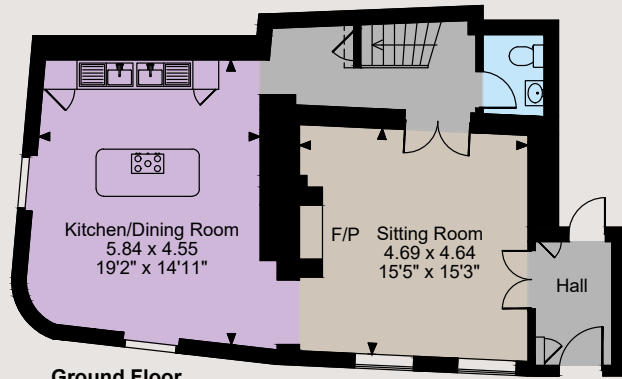








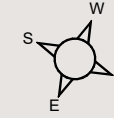
The Beach House, Beach Street, Deal
 Internal area 2,052 sq ft (191 sq m)
 For identification purposes only.



The position & size of doors, windows, appliances and other features are approximate only.

□ □ □ □ Denotes restricted head height

© ehouse. Unauthorised reproduction prohibited. Drawing ref. dig/8606922/SLU



Directions

Approaching Deal via the A258/Dover Road, head towards the town centre and turn right after passing the castle, onto Ranelagh Road. Turn left onto Prince of Wales Terrace and at the roundabout by the pier continue straight over heading north. The Beach House will be found on the left just after The Royal Hotel.

General

Local Authority: Dover District Council
Services: All mains services; gas heating.

Council Tax: Band F

Tenure: Freehold

Guide Price: £900,000

Canterbury

2 St Margaret's Street, Canterbury, Kent CT1 2SL

01227 473700

canterbury@struttandparker.com
 struttandparker.com



Over 50 offices across England and Scotland,
 including Prime Central London



For the finer things in property.



IMPORTANT NOTICE: Strutt & Parker gives notice that: 1. These particulars do not constitute an offer or contract or part thereof. 2. All descriptions, photographs and plans are for guidance only and should not be relied upon as statements or representations of fact. All measurements are approximate and not necessarily to scale. Any prospective purchaser must satisfy themselves of the correctness of the information within the particulars by inspection or otherwise. 3. Strutt & Parker does not have any authority to give any representations or warranties whatsoever in relation to this property (including but not limited to planning/building regulations), nor can it enter into any contract on behalf of the Vendor. 4. Strutt & Parker does not accept responsibility for any expenses incurred by prospective purchasers in inspecting properties which have been sold, let or withdrawn. 5. We are able to refer you to SPF Private Clients Limited ("SPF") for mortgage broking services, and to Alexander James Interiors ("AJI"), an interior design service. Should you decide to use the services of SPF, we will receive a referral fee from them of 25% of the aggregate of the fee paid to them by you for the arrangement of a mortgage and any fee received by them from the product provider. Should you decide to use the services of AJI, we will receive a referral fee of 10% of the net income received by AJI for the services they provide to you. 6. If there is anything of particular importance to you, please contact this office and Strutt & Parker will try to have the information checked for you. Photographs taken July 2024. Particulars prepared July 2024. Strutt & Parker is a trading style of BNP Paribas Real Estate Advisory & Property Management UK Limited