



Brompton Square, Knightsbridge SW3

# Flat 1, 32 Brompton Square, London, SW3 2AE

A charming lateral apartment on one of London's finest private garden squares.

2 Bedrooms | 2 Bathrooms | Separate kitchen  
Own private entrance | Patio

A charming lateral, 2-bedroom, 2-bathroom apartment found on the lower ground floor of this large, end of terrace, stucco fronted town house.

The property is presented in great condition throughout and has the benefit of a private patio where there is scope, subject to the relevant permissions, to build out and improve the property further.

Access to the highly sought after private gardens is available by separate negotiation.



## Terms

**Tenure:** Leasehold expiring 25/12/2143 thus circa 119 years remaining

**Service Charge:** £3,600 pa

**Council Tax:** G

**EPC:** Rated C

**Local Authority:** The Royal Borough of Kensington and Chelsea

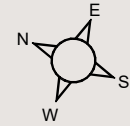
**Price:** £1,250,000







Floorplans  
Flat internal area 948 sq ft  
For identification purposes only.

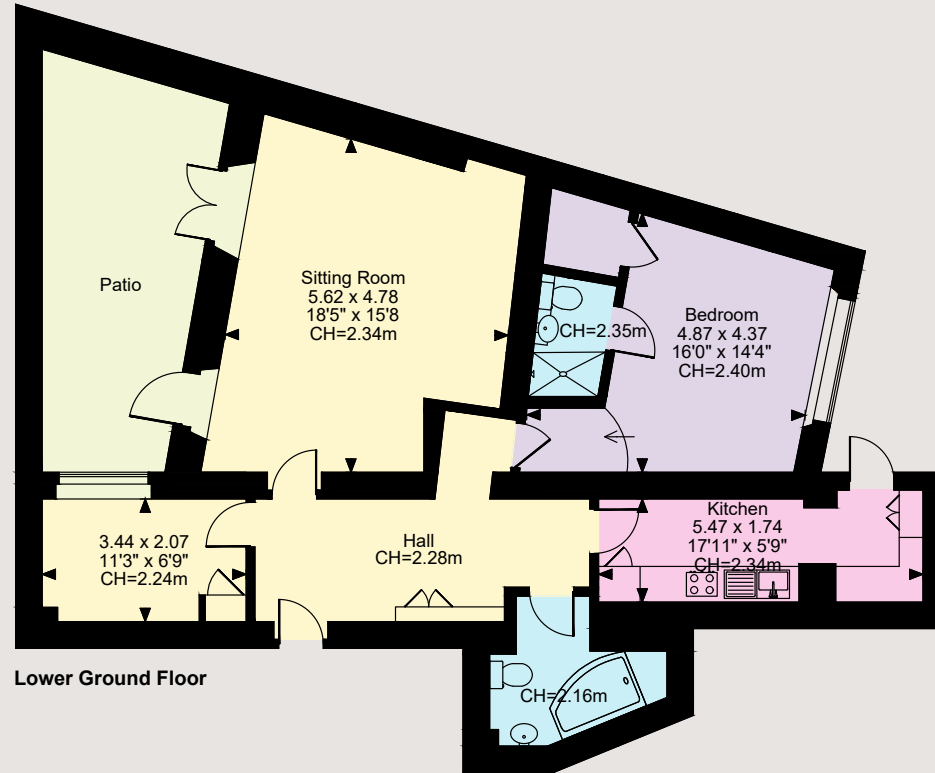


## Location

32 Brompton Square is located at the quieter northern end of the square, running off the Brompton Road to the south of Hyde Park, providing access to all the shops, bars and restaurants that Knightsbridge has to offer, including the world famous department stores of Harrods and Harvey Nichols, and the museums of nearby South Kensington.

Knightsbridge underground station (Piccadilly line) is 0.5 miles away

South Kensington underground station (Circle and District lines) is 0.6 miles away



Lower Ground Floor

The position & size of doors, windows, appliances and other features are approximate only.  
© ehouse. Unauthorised reproduction prohibited. Drawing ref. dig/8625147/KKM

## Knightsbridge & Belgravia

66 Sloane Street, London SW1X 9SH

020 7235 9959

knightsbridge@struttandparker.com

**IMPORTANT NOTICE:** Strutt & Parker gives notice that: 1. These particulars do not constitute an offer or contract or part thereof. 2. All descriptions, photographs and plans are for guidance only and should not be relied upon as statements or representations of fact. All measurements are approximate and not necessarily to scale. Any prospective purchaser must satisfy themselves of the correctness of the information within the particulars by inspection or otherwise. 3. Strutt & Parker does not have any authority to give any representations or warranties whatsoever in relation to this property (including but not limited to planning/building regulations), nor can it enter into any contract on behalf of the Vendor. 4. Strutt & Parker does not accept responsibility for any expenses incurred by prospective purchasers in inspecting properties which have been sold, let or withdrawn. 5. We are able to refer you to SPF Private Clients Limited ("SPF") for mortgage broking services, and to Alexander James Interiors ("AJI"), an interior design service. Should you decide to use the services of SPF, we will receive a referral fee from them of 25% of the aggregate of the fee paid to them by you for the arrangement of a mortgage and any fee received by them from the product provider. Should you decide to use the services of AJI, we will receive a referral fee of 10% of the net income received by AJI for the services they provide to you. 6. If there is anything of particular importance to you, please contact this office and Strutt & Parker will try to have the information checked for you. Photographs taken October 2024. Particulars prepared October 2024. Strutt & Parker is a trading style of BNP Paribas Real Estate Advisory & Property Management UK Limited.