



23 Bury Green, Wheathampstead, Hertfordshire,

For the finer things in property.

**STRUTT
& PARKER**

BNP PARIBAS GROUP 

23 Bury Green, Wheathampstead, AL4 8DL

A spacious four-bedroom detached home in a sought-after village setting.

Harpenden town centre 3.0 miles, Harpenden mainline station 3.0 miles (London St Pancras 25 minutes), St. Albans 4.7 miles, Welwyn Garden city 4.8 miles, Hatfield 5.4 miles, M1 (Jct 9) 6.5 miles, London Luton Airport 7.5 miles

Sitting room | Garden room | Study | Dining room | Kitchen | Utility | Cloakroom | Principal bedroom with en suite shower room | 3 Further bedrooms | Family bathroom | Garage | Gardens EPC rating D

The property

23 Bury Green is a well-presented detached family home, set in a popular residential area in the village of Wheathampstead. The property offers four bedrooms and comfortable, flexible accommodation, including four ground-floor reception rooms. Outside, there are sunny south-facing gardens.

Leading from the entrance hall is the sitting room. This overlooks the rear garden and welcomes plenty of natural light through French doors which open onto the patio area. There is also a useful home study, a dining room and a light, airy garden room with full-height windows and French doors opening onto the gardens. The kitchen is fitted with white units to base and wall level, and provides integrated appliances including a double oven and a gas hob with an extractor hood.

Upstairs there are four double bedrooms, two of which benefit from built-in storage. These include the principal bedroom with its en suite shower room. The first floor also has a family bathroom with an over-bath shower.

Outside

At the front of the property, the driveway leads to the integrated garage and offers plenty of parking space for several vehicles. The attractive front gardens include an area of lawn and various established shrubs and hedgerows, including lavender. At the rear, the south-facing gardens welcome plenty of sunlight throughout the day and include a patio for al fresco dining, as well as an area of lawn bordered by well-stocked beds, established hedgerows and timber fencing. There is also a shed for garden storage.

Location

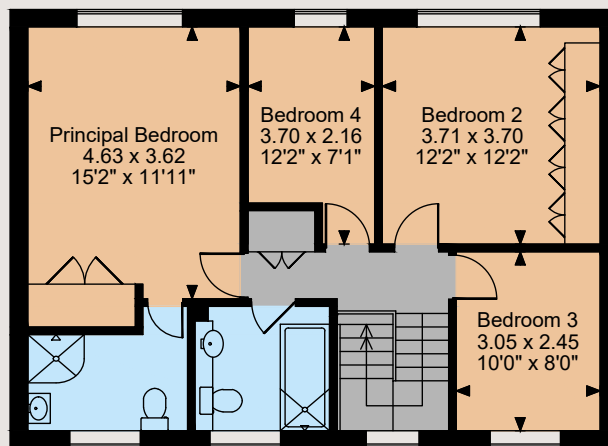
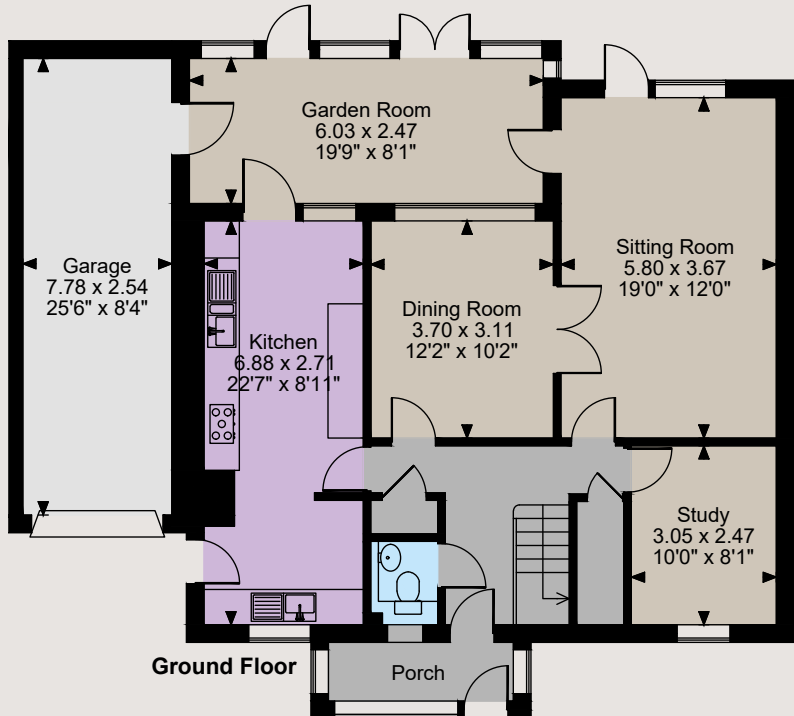
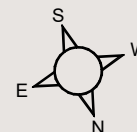
The property is located in a quiet residential area in the sought-after village of Wheathampstead, three miles east of the popular town of Harpenden. The village offers plenty of local amenities, including a number of shops, a local supermarket, several pubs and restaurants, Church, a post office and a doctor's surgery. There are several good schools in the local area, including Beech Hyde and St. Helens while the independent Aldwickbury School and St. Albans High School for Girls (Prep) are also close-at hand. There are also several excellent secondary schools in the area.

Harpenden is just a short drive away, offering further amenities including a good choice of shops and supermarkets, and its mainline station, which provides fast and regular services to London (25 minutes to London St. Pancras). By road, the A1(M) is less than four miles away, while the M1 is also within easy reach. Golf is available nearby at Wheathampstead Golf Course, Aldwickbury Park Golf Club and Mid Herts Golf Course.





Floorplans
 House internal area 1,727 sq ft (161 sq m)
 Garage internal area 213 sq ft (20 sq m)
 Total internal area 1950 sq ft (181 sq m)
 For identification purposes only.



The position & size of doors, windows, appliances and other features are approximate only.
 © ehouse. Unauthorised reproduction prohibited. Drawing ref. dig/8625693/TML

Directions

With Strutt & Parker's Harpenden office on your left, head along the High Street and continue straight ahead at the roundabout onto St. Albans Road. At the next roundabout, take the first exit onto Bull Road and then continue onto Southdown Road. Take the second exit at two consecutive roundabouts, and at the third roundabout, take the first exit onto Piggottshill Lane. Go straight ahead at the first roundabout, and at the second roundabout, take the third exit onto Wheathampstead Road. Continue for 2 miles, into Wheathampstead, then turn left onto Bury Green. You will find the property on your left, on the corner of High Meads.

General

Local Authority: St. Albans City and Wheathampstead District
Services: Electricity, gas, mains water and drainage
Council Tax: G
Tenure: Freehold
Guide Price: £895,000

Harpenden

49 High Street, Harpenden, Hertfordshire AL5 2SJ
01582 764343

harpenden@struttandparker.com
 struttandparker.com



Over 50 offices across England and Scotland, including Prime Central London

IMPORTANT NOTICE: Strutt & Parker gives notice that: 1. These particulars do not constitute an offer or contract or part thereof. 2. All descriptions, photographs and plans are for guidance only and should not be relied upon as statements or representations of fact. All measurements are approximate and not necessarily to scale. Any prospective purchaser must satisfy themselves of the correctness of the information within the particulars by inspection or otherwise. 3. Strutt & Parker does not have any authority to give any representations or warranties whatsoever in relation to this property (including but not limited to planning/building regulations), nor can it enter into any contract on behalf of the Vendor. 4. Strutt & Parker does not accept responsibility for any expenses incurred by prospective purchasers in inspecting properties which have been sold, let or withdrawn. 5. We are able to refer you to SPF Private Clients Limited ("SPF") for mortgage broking services, and to Alexander James Interiors ("AJI"), an interior design service. Should you decide to use the services of SPF, we will receive a referral fee from them of 25% of the aggregate of the fee paid to them by you for the arrangement of a mortgage and any fee received by them from the product provider. Should you decide to use the services of AJI, we will receive a referral fee of 10% of the net income received by AJI for the services they provide to you. 6. If there is anything of particular importance to you, please contact this office and Strutt & Parker will try to have the information checked for you. Photographs taken October 2024. Particulars prepared November 2024. Strutt & Parker is a trading style of BNP Paribas Real Estate Advisory & Property Management UK Limited



For the finer things in property.

