



Cadogan Place, Knightsbridge, SW1X

**STRUTT & PARKER**  
BNP PARIBAS GROUP 

## Cadogan Place, SW1X

This immaculately presented garden duplex has been refurbished throughout beautifully. It boasts incredibly light accommodation over two floors only with high ceilings and solid wood flooring in principal rooms.

On the raised ground floor there is a large entrance hall, leading to a drawing room to the front of the building and a large kitchen/dining room with access to the patio, there is also a cloakroom.

The garden level comprises a large principal bedroom, dressing room and ensuite bathroom with direct access to the private patio. There are two further ensuite bedrooms, a utility room and access to a vault.

Entrance hall | Drawing room | Kitchen Dining room | Cloakroom | Principal suite | Bathroom | Two further en suite Bedrooms| Utility room | Vault | Private patio| Air conditioning | New alarm Communal gardens (by separate negotiation | EPC rating TBC | Council Tax Band TBC

\* The following Tenant Charges may apply prior to tenancy

Commencement: Tenancy agreement £354 (inc VAT), credit references per application £70 (inc VAT).

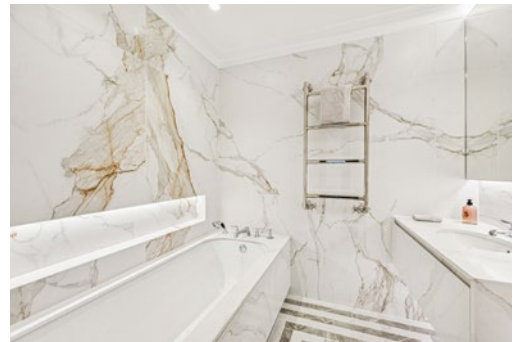
All advertised prices are exclusive of utility and other associated services

**Local Authority:** Royal Borough of Kensington and Chelsea

**Price:** £4,750 per week



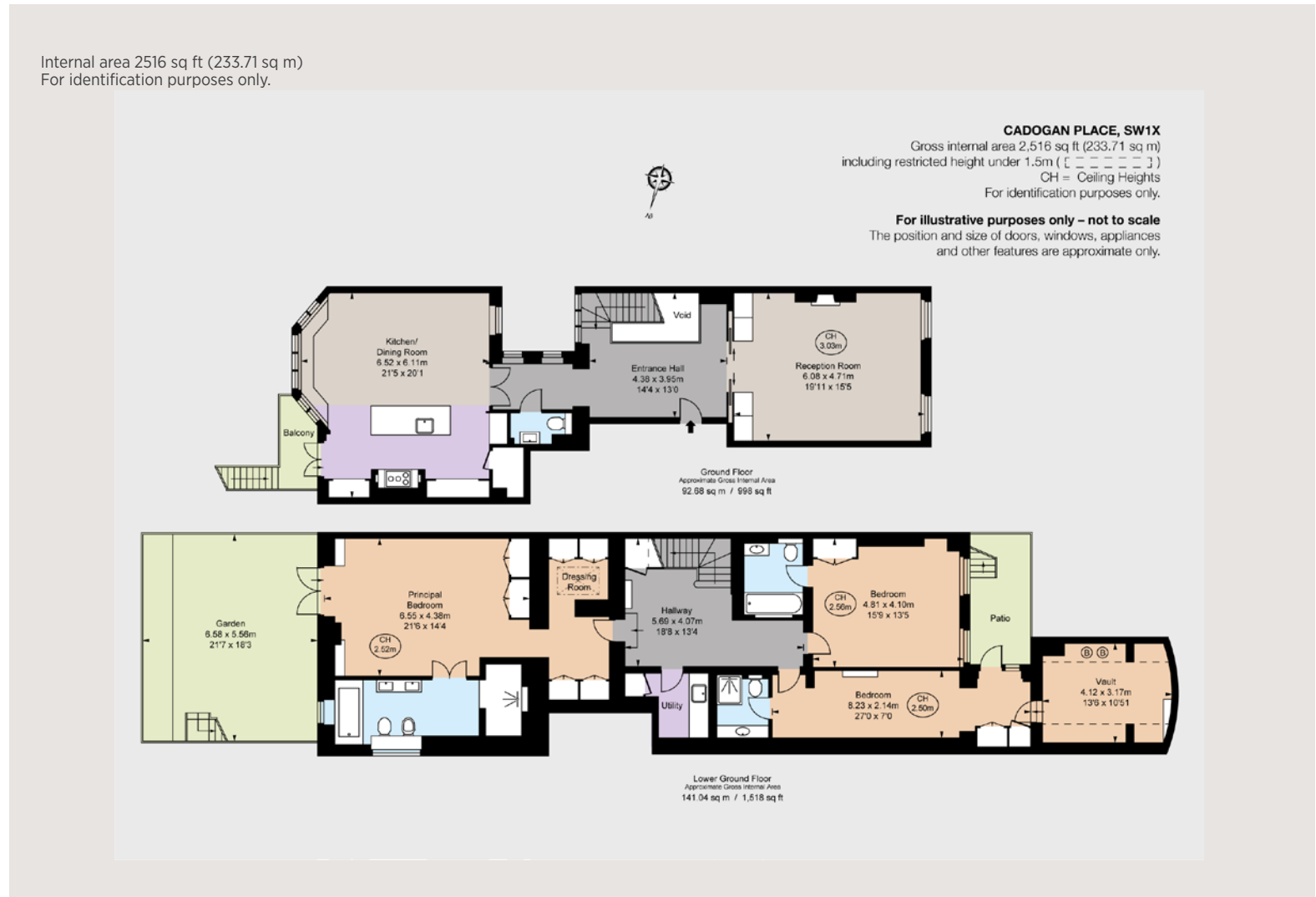








Internal area 2516 sq ft (233.71 sq m)  
For identification purposes only.



## Knightsbridge & Belgravia

66 Sloane Street, London SW1X 9SH

**020 7235 9959**

knightsbridge@struttandparker.com

**IMPORTANT NOTICE:** Strutt & Parker gives notice that: 1. These particulars do not constitute an offer or contract or part thereof. 2. All descriptions, photographs and plans are for guidance only and should not be relied upon as statements or representations of fact. All measurements are approximate and not necessarily to scale. Any prospective purchaser must satisfy themselves of the correctness of the information within the particulars by inspection or otherwise. 3. Strutt & Parker does not have any authority to give any representations or warranties whatsoever in relation to this property (including but not limited to planning/building regulations), nor can it enter into any contract on behalf of the Vendor. 4. Strutt & Parker does not accept responsibility for any expenses incurred by prospective purchasers in inspecting properties which have been sold, let or withdrawn. 5. We are able to refer you to SPF Private Clients Limited ("SPF") for mortgage broking services, and to Alexander James Interiors ("AJI"), an interior design service. Should you decide to use the services of SPF, we will receive a referral fee from them of 25% of the aggregate of the fee paid to them by you for the arrangement of a mortgage and any fee received by them from the product provider. Should you decide to use the services of AJI, we will receive a referral fee of 10% of the net income received by AJI for the services they provide to you. 6. If there is anything of particular importance to you, please contact this office and Strutt & Parker will try to have the information checked for you. Photographs taken April 2024. Particulars prepared April 2024. Strutt & Parker is a trading style of BNP Paribas Real Estate Advisory & Property Management UK Limited.