



Chelsea Crescent, Chelsea, SW10

For the finer things in property.





## Chelsea Crescent, Chelsea, SW10

A sensational waterfront apartment, enjoying spectacular easterly river views.

Waterfront apartment | Spectacular views  
First floor | Impressive reception/dining room  
Separate kitchen | Two bedrooms | Two  
bathrooms | Guest cloakroom | Chelsea Harbour  
development | On-site porters from 7 am - 8 pm  
Allocated underground parking | No chain  
EPC Rating B

Set within the Chelsea Harbour development – benefitting from on-site porters and allocated underground parking, this wonderful first floor lateral apartment offers spacious proportions and superb views of the River Thames.

Measuring over 1,550 square feet, the accommodation provides a substantial reception/dining room, a neatly positioned modern kitchen, a guest cloakroom, a principal bedroom with an en-suite bathroom, a second bedroom, second bathroom and plenty of storage space.

Chelsea Harbour stands on land that was once the 28-acre estate of Sandford Manor House. At the start of the 19th-century, it was in decline and was purchased by a gas company. Part of the land was used as a Victorian-era railway coaling dock on the River Thames. Latterly it had been a coal yard for predecessor companies of British Rail.

Chelsea Harbour was designed by architects Moxley Jenner & Partners, developed by Mansford, with Bovis Homes Group serving as project management consultants in 1986. It was the biggest single construction project in the United Kingdom for decades.



### Terms

**Tenure:** Leasehold - 89 Years - Chelsea Harbour Ltd  
**Service Charge:** £16,000 PA  
**Ground Rent:** £300 PA  
**Council Tax:** Band H  
**Local Authority:** The Royal Borough of Kensington and Chelsea  
**Asking Price:** £1,375,000



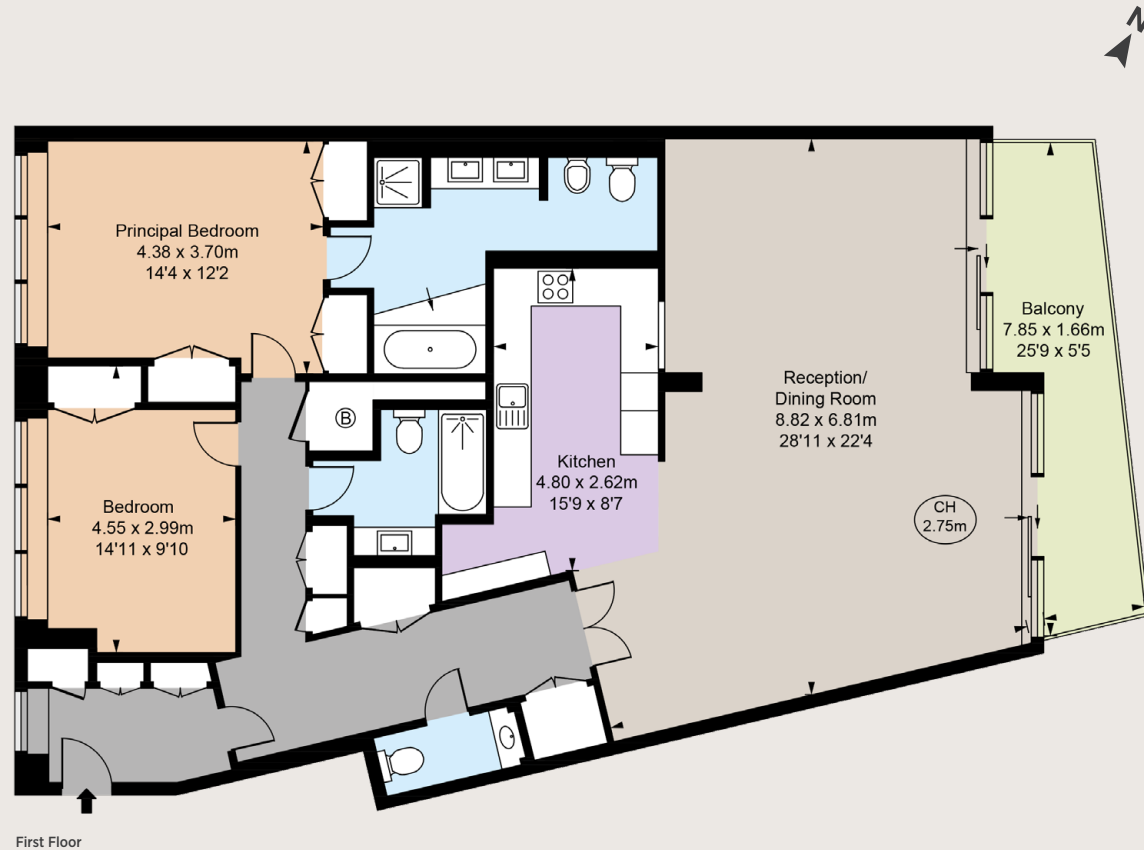








Gross Internal Area 1,556 sq ft (144.52 sq m)  
For identification purposes only.



First Floor

## Chelsea SW10

140 Fulham Road, London, SW10 9PY

020 7373 1010

chelseaSW10@struttandparker.com

### IMPORTANT NOTICE

Strutt & Parker gives notice that: 1. These particulars do not constitute an offer or contract or part thereof. 2. All descriptions, photographs and plans are for guidance only and should not be relied upon as statements or representations of fact. All measurements are approximate and not necessarily to scale. Any prospective purchaser must satisfy themselves of the correctness of the information within the particulars by inspection or otherwise. 3. Strutt & Parker does not have any authority to give any representations or warranties whatsoever in relation to this property (including but not limited to planning/building regulations), nor can it enter into any contract on behalf of the Vendor. 4. Strutt & Parker does not accept responsibility for any expenses incurred by prospective purchasers in inspecting properties which have been sold, let or withdrawn. 5. We are able to refer you to SPF Private Clients Limited ("SPF") for mortgage broking services, and to Alexander James Interiors ("AJI"), an interior design service. Should you decide to use the services of SPF, we will receive a referral fee from them of 25% of the aggregate of the fee paid to them by you for the arrangement of a mortgage and any fee received by them from the product provider. Should you decide to use the services of AJI, we will receive a referral fee of 10% of the net income received by AJI for the services they provide to you. 6. If there is anything of particular importance to you, please contact this office and Strutt & Parker will try to have the information checked for you. Photographs taken June 2024. Particulars prepared June 2024 Strutt & Parker is a trading style of BNP Paribas Real Estate Advisory & Property Management UK Limited.



Over 50 offices across England and Scotland,  
including Prime Central London

For the finer things in property.

