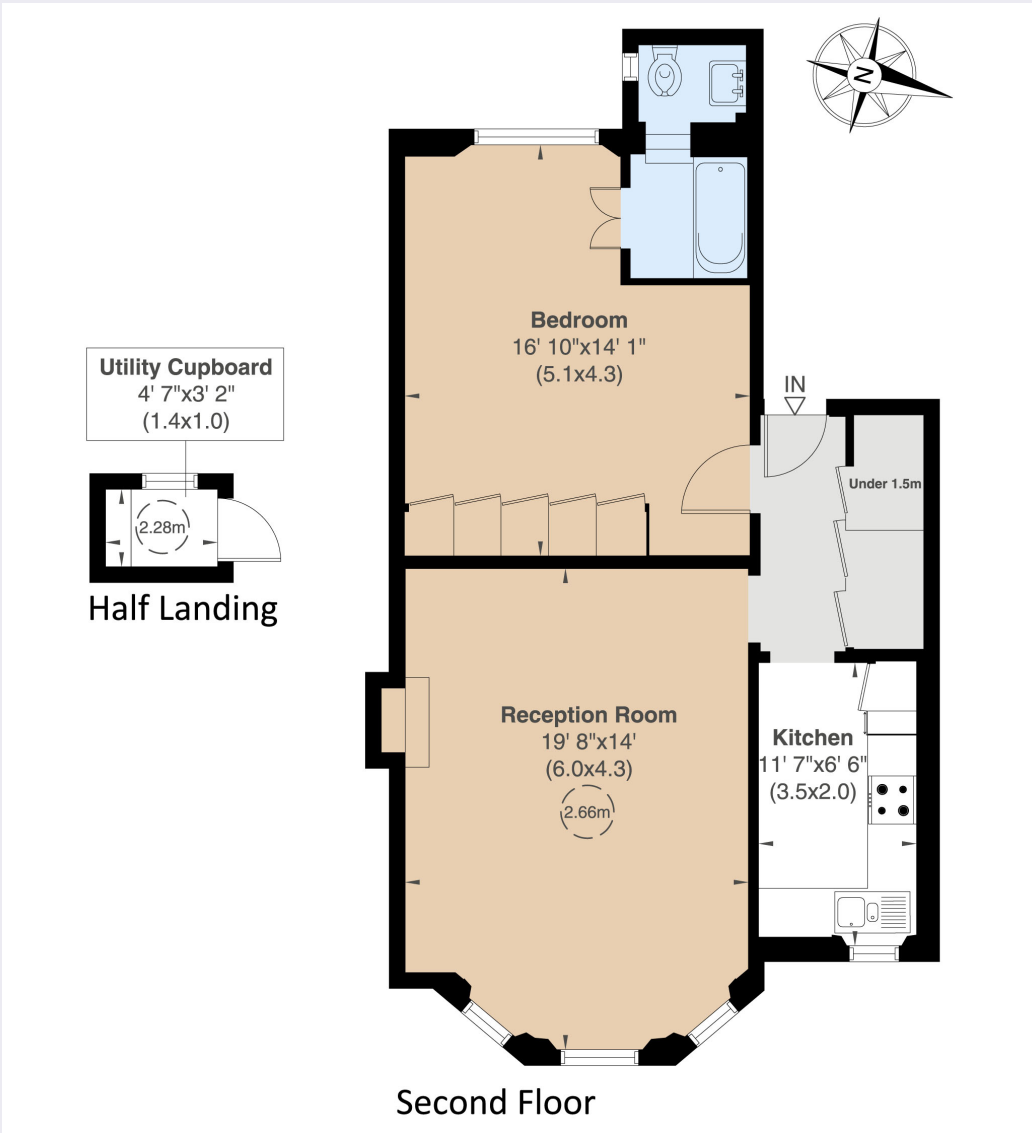


# Colville Road

Notting Hill, W11





## A superb second floor flat in the heart of Notting Hill.

This one-bedroom flat has fantastic proportions and an abundance of natural light.

The large reception room is perfect for entertaining with an impressive feature bay window. There is a separate kitchen and the large bedroom has built in storage and an en suite bathroom.

The utility cupboard is located on the half landing with good storage space.

Colville Road is a very central Notting Hill address which runs off Westbourne Grove and parallel to Portobello Road. It is therefore in close proximity to all the shops, restaurants, coffee shops and transport facilities of the local area. The green spaces of Kensington Gardens are also close by.

### Floorplans

**Gross internal area 684 sq ft (64 sq m) including under 1.5m and utility**  
**654 sq ft (61 sq m) excluding under 1.5m and utility**

For identification purposes only.

### General

**Tenure:** Share of Freehold  
**Local Authority:** The Royal Borough of Kensington and Chelsea  
**Service Charge:** £200 per month  
**Council Tax:** Band F  
**EPC Rating:** D  
**Parking:** RBKC Permit  
**Broadband:** Available  
**Asking Price:** £895,000

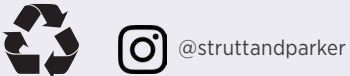
### Notting Hill

303 Westbourne Grove, London, W11 2QA

**020 7221 1111**

nottinghill@struttandparker.com  
struttandparker.com

**IMPORTANT NOTICE:** Strutt & Parker gives notice that: 1. These particulars do not constitute an offer or contract or part thereof. 2. All descriptions, photographs and plans are for guidance only and should not be relied upon as statements or representations of fact. All measurements are approximate and not necessarily to scale. Any prospective purchaser must satisfy themselves of the correctness of the information within the particulars by inspection or otherwise. 3. Strutt & Parker does not have any authority to give any representations or warranties whatsoever in relation to this property (including but not limited to planning/building regulations), nor can it enter into any contract on behalf of the Vendor. 4. Strutt & Parker does not accept responsibility for any expenses incurred by prospective purchasers in inspecting properties which have been sold, let or withdrawn. 5. We are able to refer you to SPF Private Clients Limited ("SPF") for mortgage broking services, and to Alexander James Interiors ("AJI"), an interior design service. Should you decide to use the services of SPF, we will receive a referral fee from them of 25% of the aggregate of the fee paid to them by you for the arrangement of a mortgage and any fee received by them from the product provider. Should you decide to use the services of AJI, we will receive a referral fee of 10% of the net income received by AJI for the services they provide to you. 6. If there is anything of particular importance to you, please contact this office and Strutt & Parker will try to have the information checked for you. Photographs taken March 2025. Particulars prepared March 2025. Strutt & Parker is a trading style of BNP Paribas Real Estate Advisory & Property Management UK Limited



Over 50 offices across England and Scotland, including Prime Central London

For the finer things in property.

