



Colville Terrace, Notting Hill, W11

For the finer things in property.



Colville Terrace, Notting Hill, W11

An outstanding two bedroom flat with a private entrance and south-facing garden.

This light and beautifully presented flat occupies over 1,100sqft on the ground and lower ground floors of this handsome stucco fronted period building. There is a very good entertaining space with bi-folding doors from the dining area leading to a large, private garden.

Colville Terrace is located in close proximity to the highly fashionable addresses of Westbourne Grove and Portobello Road, and benefits from all the shopping and transport facilities of the local area.

Private entrance | Entrance hall | Kitchen
Reception room | Dining area | Two bedrooms
Bathroom | Garden | EPC Rating C

Terms

Tenure: Leasehold of 99 years from 29/09/1995 (70 years remaining)

Service Charge: Approximately £2,000 per annum

Ground Rent: £150 per annum

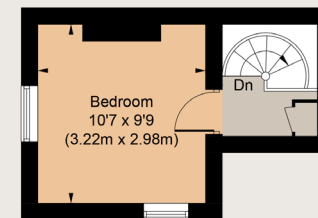
Council Tax: Band F

Local Authority: The Royal Borough of Kensington and Chelsea

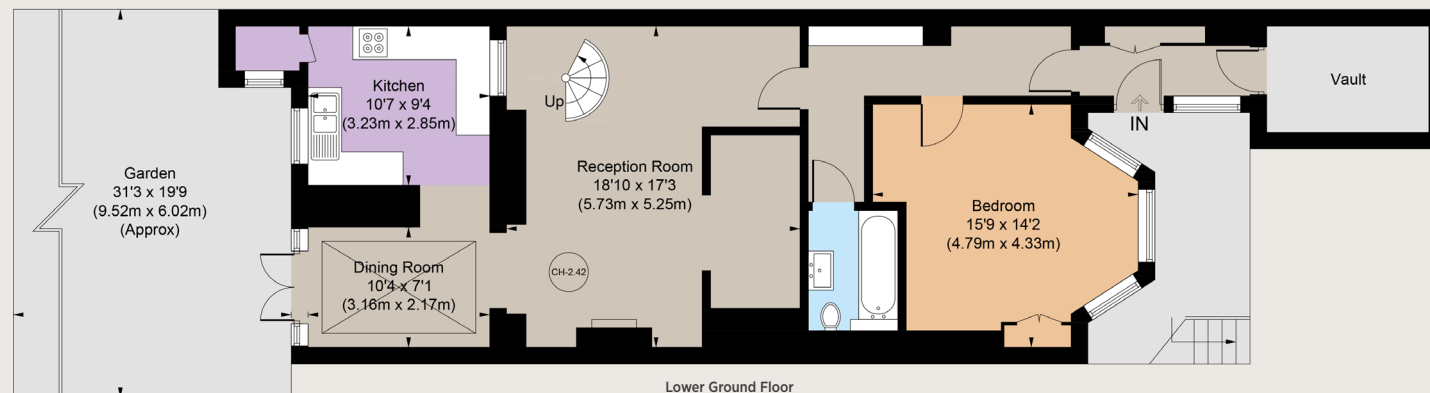
Asking Price: £1,150,000



Gross Internal Area 1,143 sq ft (106.2 sq m) including vault
For identification purposes only.



Ground Floor



Lower Ground Floor

Notting Hill

303 Westbourne Grove, London, W11 2QA

020 7221 1111

nottinghill@struttandparker.com

struttandparker.com

IMPORTANT NOTICE

Strutt & Parker gives notice that: 1. These particulars do not constitute an offer or contract or part thereof. 2. All descriptions, photographs and plans are for guidance only and should not be relied upon as statements or representations of fact. All measurements are approximate and not necessarily to scale. Any prospective purchaser must satisfy themselves of the correctness of the information within the particulars by inspection or otherwise. 3. Strutt & Parker does not have any authority to give any representations or warranties whatsoever in relation to this property (including but not limited to planning/building regulations), nor can it enter into any contract on behalf of the Vendor. 4. Strutt & Parker does not accept responsibility for any expenses incurred by prospective purchasers in inspecting properties which have been sold, let or withdrawn. 5. We are able to refer you to SPF Private Clients Limited ("SPF") for mortgage broking services, and to Alexander James Interiors ("AJI"), an interior design service. Should you decide to use the services of SPF, we will receive a referral fee from them of 25% of the aggregate of the fee paid to them by you for the arrangement of a mortgage and any fee received by them from the product provider. Should you decide to use the services of AJI, we will receive a referral fee of 10% of the net income received by AJI for the services they provide to you. 6. If there is anything of particular importance to you, please contact this office and Strutt & Parker will try to have the information checked for you. Photographs taken June 2024. Particulars prepared June 2024. Strutt & Parker is a trading style of BNP Paribas Real Estate Advisory & Property Management UK Limited.



Over 50 offices across England and Scotland,
including Prime Central London

For the finer things in property.

