



Cornwall Gardens, South Kensington, SW7

For the finer things in property.





## Cornwall Gardens, South Kensington, SW7

'The Jasmine Garden.' Meticulously modernised 2 bedroom 2 bathroom garden apartment

Two bedrooms | Reception room | Two bathrooms | Residents parking | EPC rating C

'The Jasmine Garden.' This fabulous 2 bedroom garden flat has been meticulously modernised to a brilliant standard, benefits from a large open plan reception room with a new kitchen, private garden and 2 good well-proportioned bedrooms.

Cornwall Gardens is one of South Kensington's leading garden square addresses. It is ideally situated close by to the selection of shops and restaurants on Gloucester Roads, Old Brompton Road and to Kensington High Street

Gloucester Road and South Kensington Underground stations are equidistantly located to the address.

### Terms

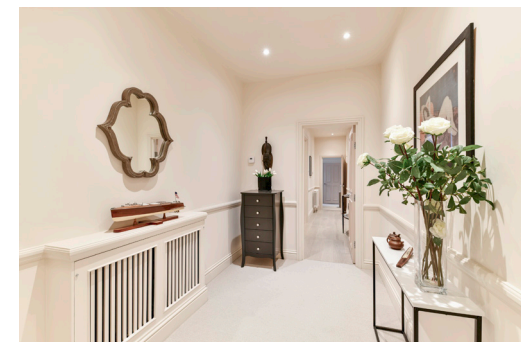
**Tenure:** Leasehold, 138 remaining. From and including 29 May 1973 to and including 28 May 2162

**Service Charge:** £2,970 per annum

**Council Tax:** Band F

**Local Authority:** The Royal Borough of Kensington and Chelsea

**Asking Price:** £1,395,000



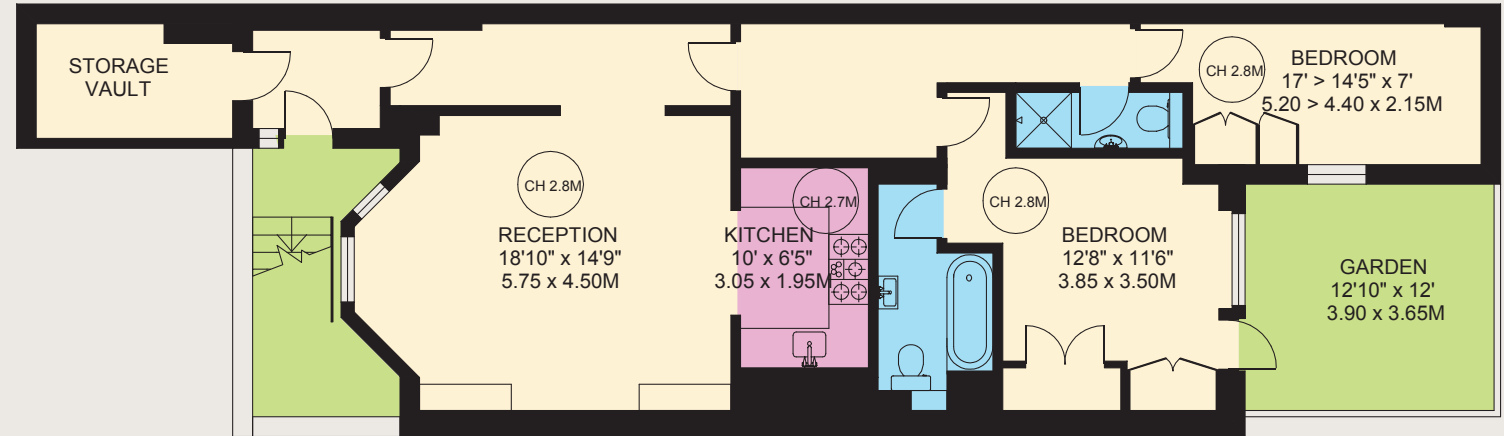








Gross Internal Area 1,002 sq ft (93.1 sq m)  
For identification purposes only.



Lower Ground Floor

## South Kensington

90 Old Brompton Road, London, SW7 3LQ

020 7581 7000

southken@struttandparker.com

### IMPORTANT NOTICE

Strutt & Parker gives notice that: 1. These particulars do not constitute an offer or contract or part thereof. 2. All descriptions, photographs and plans are for guidance only and should not be relied upon as statements or representations of fact. All measurements are approximate and not necessarily to scale. Any prospective purchaser must satisfy themselves of the correctness of the information within the particulars by inspection or otherwise. 3. Strutt & Parker does not have any authority to give any representations or warranties whatsoever in relation to this property (including but not limited to planning/building regulations), nor can it enter into any contract on behalf of the Vendor. 4. Strutt & Parker does not accept responsibility for any expenses incurred by prospective purchasers in inspecting properties which have been sold, let or withdrawn. 5. We are able to refer you to SPF Private Clients Limited ("SPF") for mortgage broking services, and to Alexander James Interiors ("AJI"), an interior design service. Should you decide to use the services of SPF, we will receive a referral fee from them of 25% of the aggregate of the fee paid to them by you for the arrangement of a mortgage and any fee received by them from the product provider. Should you decide to use the services of AJI, we will receive a referral fee of 10% of the net income received by AJI for the services they provide to you. 6. If there is anything of particular importance to you, please contact this office and Strutt & Parker will try to have the information checked for you. Photographs taken April 2024. Particulars prepared April 2024. Strutt & Parker is a trading style of BNP Paribas Real Estate Advisory & Property Management UK Limited.



Over 45 offices across England and Scotland,  
including Prime Central London

For the finer things in property.

