



De Vere Mews, Kensington, W8

For the finer things in property.



De Vere Mews, Kensington, W8

A beautifully presented two-bedroom apartment in a private gated mews with the benefit of a lift and shared communal courtyard.

A two bedroom apartment entered on the second floor comprising 702 square foot set within a private gated mews. The apartment offers a generous reception/dining room and a separate kitchen the second floor.

The principal bedroom with second bedroom / study room and family bathroom occupy the top floor. There is further access to a flat roof (not demised) via the family bathroom.

De Vere Cottages is located to the south of Kensington Gardens and therefore benefits from the shopping and transport facilities of Kensington High Street and Gloucester Road.

Reception/dining room | Kitchen | Principal bedroom | Bathroom | Further bedroom/study
Non-demised flat roof | Eaves storage
Lift | EPC rating D

Terms

Tenure: Leasehold; 215 years from 25 March 1979 therefore approximately 169 years remaining

Service Charge: Approximately £1,665.40 for the period 29/09/24 to 24/03/25 therefore approximately £3,330.80 per annum

Council Tax: Band G

Local Authority: The Royal Borough of Kensington and Chelsea

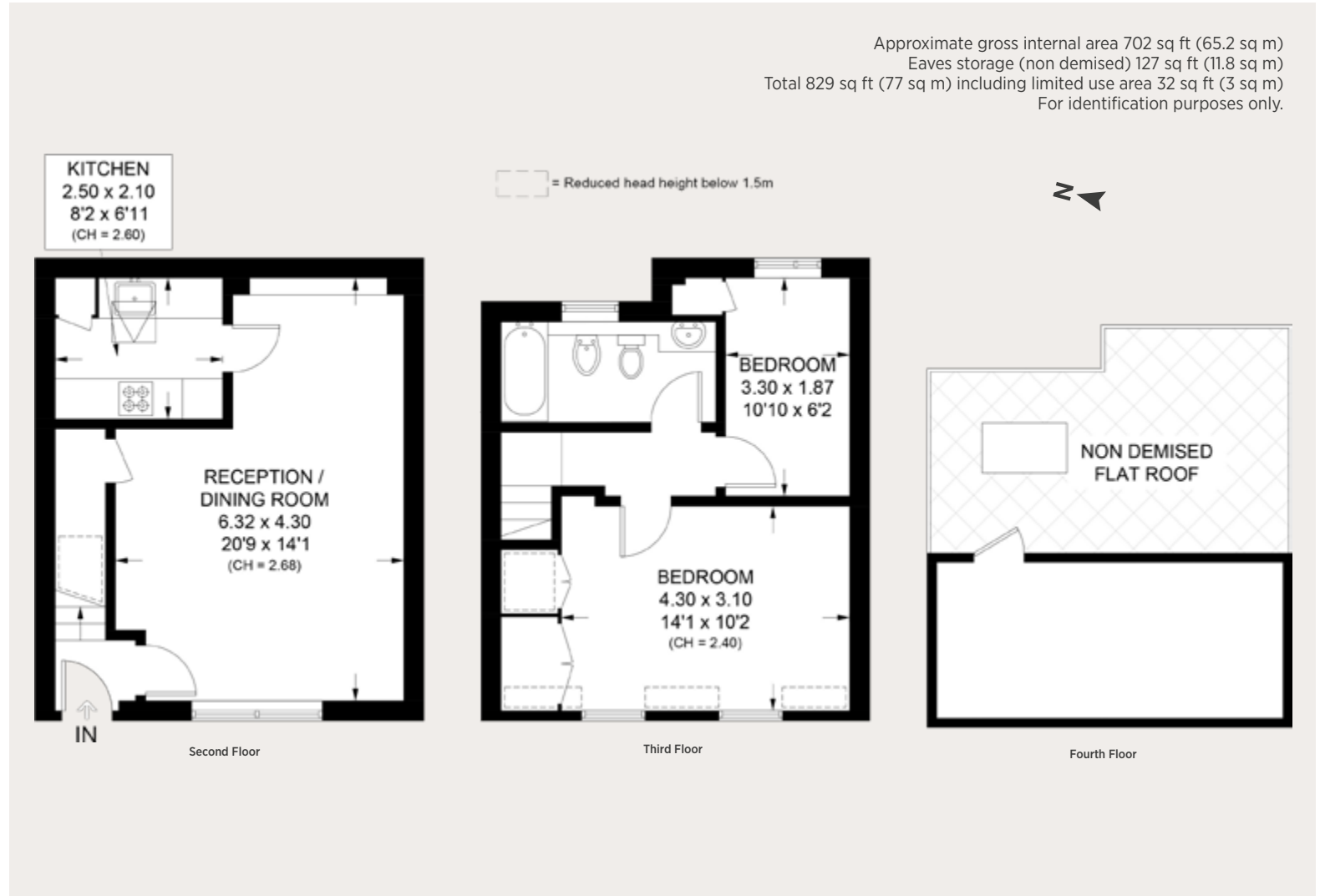
Asking Price: £950,000







Non-demised flat roof



Kensington

103 Kensington Church Street, London W8 7LN

020 7938 3666

kensington@struttandparker.com

IMPORTANT NOTICE

Strutt & Parker gives notice that: 1. These particulars do not constitute an offer or contract or part thereof. 2. All descriptions, photographs and plans are for guidance only and should not be relied upon as statements or representations of fact. All measurements are approximate and not necessarily to scale. Any prospective purchaser must satisfy themselves of the correctness of the information within the particulars by inspection or otherwise. 3. Strutt & Parker does not have any authority to give any representations or warranties whatsoever in relation to this property (including but not limited to planning/building regulations), nor can it enter into any contract on behalf of the Vendor. 4. Strutt & Parker does not accept responsibility for any expenses incurred by prospective purchasers in inspecting properties which have been sold, let or withdrawn. 5. We are able to refer you to SPF Private Clients Limited ("SPF") for mortgage broking services, and to Alexander James Interiors ("AJI"), an interior design service. Should you decide to use the services of SPF, we will receive a referral fee from them of 25% of the aggregate of the fee paid to them by you for the arrangement of a mortgage and any fee received by them from the product provider. Should you decide to use the services of AJI, we will receive a referral fee of 10% of the net income received by AJI for the services they provide to you. 6. If there is anything of particular importance to you, please contact this office and Strutt & Parker will try to have the information checked for you. Photographs taken November 2024. Particulars prepared November 2024. Strutt & Parker is a trading style of BNP Paribas Real Estate Advisory & Property Management UK Limited.



Over 50 offices across England and Scotland,
 including Prime Central London

For the finer things in property.

