

# Drayton Court

London, SW10



**STRUTT  
& PARKER**

BNP PARIBAS GROUP



## A meticulously refurbished and skilfully re-modelled flat, set within a well renowned Mansion Block.

A newly renovated, beautifully designed property featuring elegant finishes, set within the popular Drayton Court, located on Drayton Gardens, within striking distance of the Fulham Road.



**1 RECEPTION ROOM**



**2 BEDROOMS**



**1 BATHROOM**



**LEASEHOLD**



**905 SQ FT**



**PRICE  
£1,100,000**



### The property

This wonderfully spacious and lateral home offers excellent proportions, measuring over 900 sq. ft. The accommodation features two double bedrooms, a well-appointed bathroom, a spacious reception room and separate kitchen.

### Location

Located quietly at the rear of the building, the flat benefits from a prime location and sought-after residential address, with easy access to many local amenities, shops and dining options. The combination of its generous layout and smart finish makes it a standout choice in the area.

The property is offered to the market chain-free.



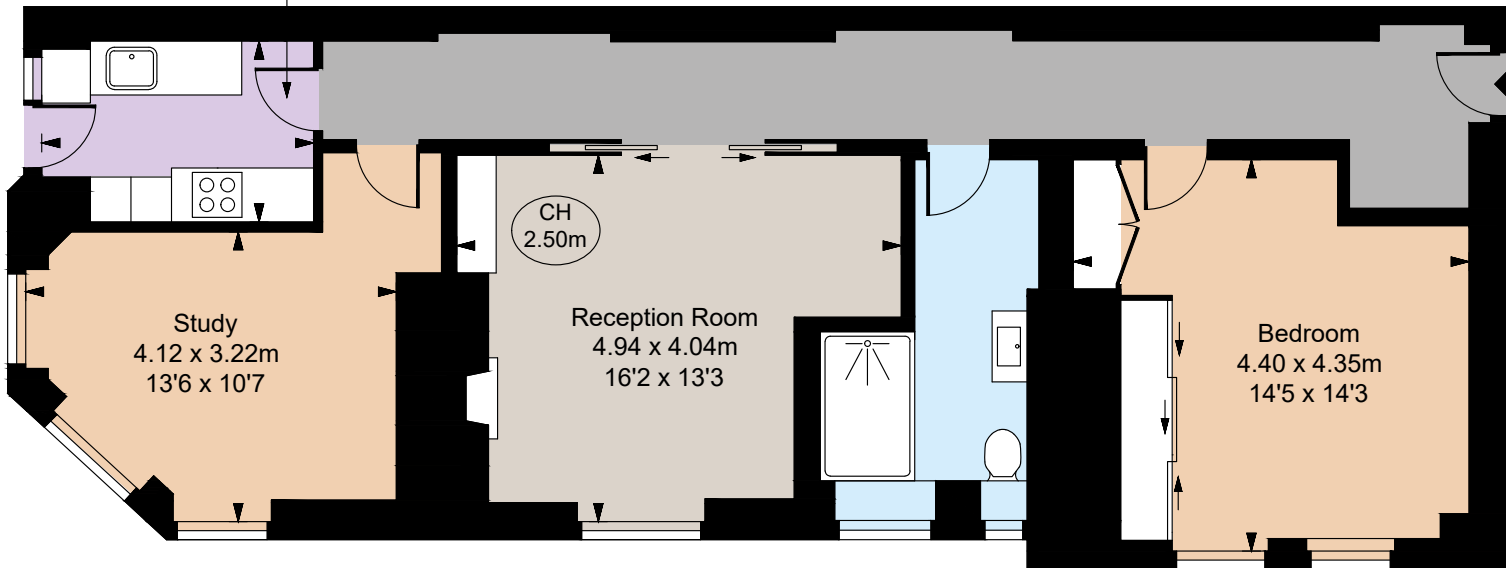








Kitchen  
3.01 x 2.01m  
9'11 x 6'7



Lower Ground Floor

Study  
4.12 x 3.22m  
13'6 x 10'7

CH  
2.50m

Reception Room  
4.94 x 4.04m  
16'2 x 13'3

Bedroom  
4.40 x 4.35m  
14'5 x 14'3

## Floorplans

Gross internal area 905 sq ft (84.10 sq m)  
For identification purposes only.

## General

Tenure: Leasehold - 164 Years

Local Authority: The Royal Borough of Kensington and Chelsea

Service Charge: £2,279 pa

Ground Rent: Peppercorn

Council Tax: Band H

EPC Rating: D

Parking: Residents' parking

Broadband: Is installed at the property

**IMPORTANT NOTICE:** Strutt & Parker gives notice that: 1. These particulars do not constitute an offer or contract or part thereof. 2. All descriptions, photographs and plans are for guidance only and should not be relied upon as statements or representations of fact. All measurements are approximate and not necessarily to scale. Any prospective purchaser must satisfy themselves of the correctness of the information within the particulars by inspection or otherwise. 3. Strutt & Parker does not have any authority to give any representations or warranties whatsoever in relation to this property (including but not limited to planning/building regulations), nor can it enter into any contract on behalf of the Vendor. 4. Strutt & Parker does not accept responsibility for any expenses incurred by prospective purchasers in inspecting properties which have been sold, let or withdrawn. 5. We are able to refer you to SPF Private Clients Limited ("SPF") for mortgage broking services, and to Alexander James Interiors ("AJI"), an interior design service. Should you decide to use the services of SPF, we will receive a referral fee from them of 25% of the aggregate of the fee paid to them by you for the arrangement of a mortgage and any fee received by them from the product provider. Should you decide to use the services of AJI, we will receive a referral fee of 10% of the net income received by AJI for the services they provide to you. 6. If there is anything of particular importance to you, please contact this office and Strutt & Parker will try to have the information checked for you. Photographs taken January 2025. Particulars prepared January 2025. Strutt & Parker is a trading style of BNP Paribas Real Estate Advisory & Property Management UK Limited

Chelsea SW10

140 Fulham Road, London, SW10 9PY

020 7373 1010

chelseaSW10@struttandparker.com

struttandparker.com



@struttandparker

Over 50 offices across England and Scotland,  
including Prime Central London

For the finer things in property.

