



Drayton Court, Chelsea, SW10

For the finer things in property.

**STRUTT  
& PARKER**

BNP PARIBAS GROUP 



# Drayton Court, Chelsea, SW10

A rare opportunity to acquire an exceptional flat in this well-regarded mansion block.

Second floor (with lift) | Well-proportioned lateral flat | Four bedrooms | Three bathrooms  
Double reception | Separate kitchen | Balcony  
No chain | Share of Freehold | EPC rating C

A rather elegant and well-proportioned home, set within the prestigious and popular Drayton Court, positioned on Drayton Gardens, a premier address in Chelsea.

This wonderful lateral flat measures over 1,850 square feet (over 170 square metres), and provides a potential purchaser with the exciting prospect of renovating and modernising to their own taste and style.

The accommodation provides a bright and expansive reception room with a balcony at the front, a separate spacious kitchen, a principal bedroom with an en suite bathroom at the rear, three further bedrooms, a further en suite shower room and additional family bathroom.

Drayton Gardens is a highly desirable location and sought-after residential address, positioned within striking distance of the Fulham Road. The property is offered to the market chain-free and with a Share of Freehold.

## Terms

**Tenure:** Share of Freehold

**Service Charge:** £5,810 pa

**Council Tax:** Band G

**Local Authority:** The Royal Borough of Kensington and Chelsea

**Asking Price:** £2,250,000



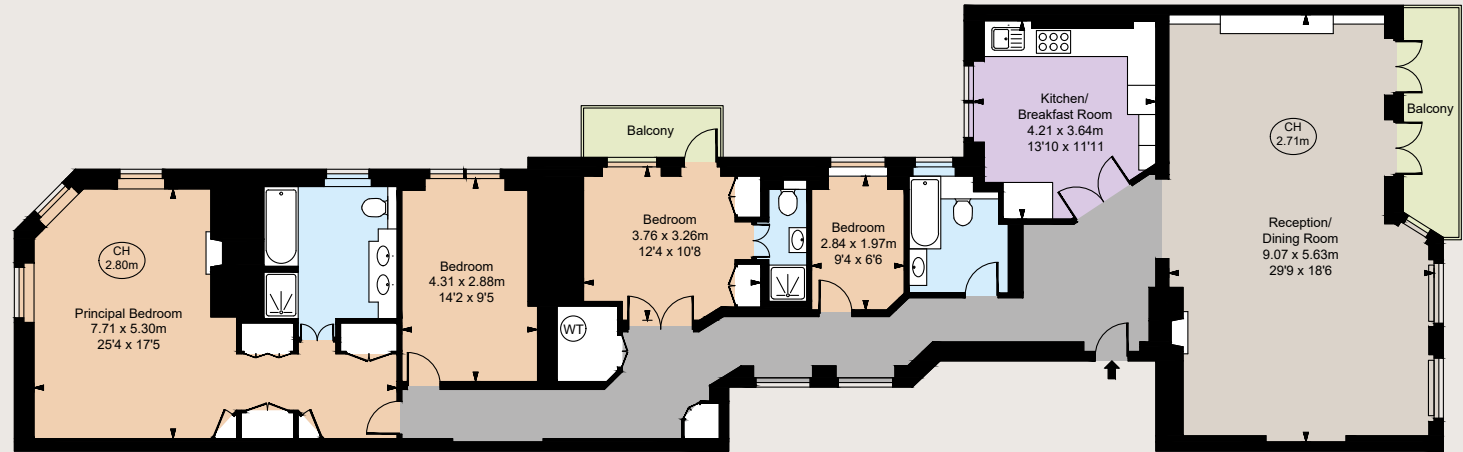








Gross Internal Area 1,868 sq ft (173.55 sq m)  
For identification purposes only.



Second Floor

## Chelsea SW10

140 Fulham Road, London, SW10 9PY

**020 7373 1010**

chelseaSW10@struttandparker.com

### IMPORTANT NOTICE

Strutt & Parker gives notice that: 1. These particulars do not constitute an offer or contract or part thereof. 2. All descriptions, photographs and plans are for guidance only and should not be relied upon as statements or representations of fact. All measurements are approximate and not necessarily to scale. Any prospective purchaser must satisfy themselves of the correctness of the information within the particulars by inspection or otherwise. 3. Strutt & Parker does not have any authority to give any representations or warranties whatsoever in relation to this property (including but not limited to planning/building regulations), nor can it enter into any contract on behalf of the Vendor. 4. Strutt & Parker does not accept responsibility for any expenses incurred by prospective purchasers in inspecting properties which have been sold, let or withdrawn. 5. We are able to refer you to SPF Private Clients Limited ("SPF") for mortgage broking services, and to Alexander James Interiors ("AJI"), an interior design service. Should you decide to use the services of SPF, we will receive a referral fee from them of 25% of the aggregate of the fee paid to them by you for the arrangement of a mortgage and any fee received by them from the product provider. Should you decide to use the services of AJI, we will receive a referral fee of 10% of the net income received by AJI for the services they provide to you. 6. If there is anything of particular importance to you, please contact this office and Strutt & Parker will try to have the information checked for you. Photographs taken October 2024. Particulars prepared October 2024. Strutt & Parker is a trading style of BNP Paribas Real Estate Advisory & Property Management UK Limited.



Over 50 offices across England and Scotland,  
including Prime Central London

For the finer things in property.

