



Eaton Terrace, London, SW1W

STRUTT & PARKER
BNP PARIBAS GROUP 

An elegant four bedroom family home situated in the heart of Belgravia.

Beautifully decorated throughout, the house is arranged over five floors and is currently unfurnished* but offers well-proportioned rooms. The property is well presented, offering a fully fitted kitchen/dining room leading onto a large 42ft landscaped garden, a wonderful first floor drawing room and four bedrooms and bathrooms.

Situated on the eastern side of Eaton Terrace, this superb location offers easy access to both Elizabeth Street and Sloane Square, with the international amenities of Knightsbridge, Chelsea and Belgravia nearby. Sloane Square underground station is within striking distance.

Entrance hall | Two drawing rooms | Sitting room | Dining room | Kitchen | Three bedrooms with ensuite bathrooms | Fourth bedroom with shower room | Guest cloakroom | Vault storage Utility room

*As previously furnished.

EPC Rating D

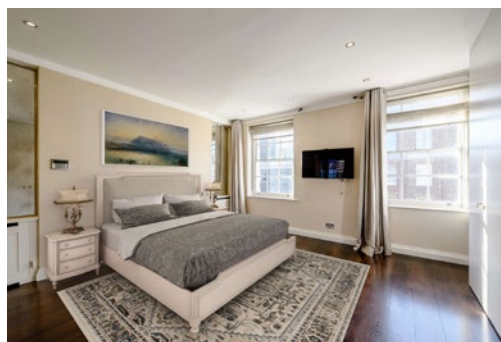
Terms

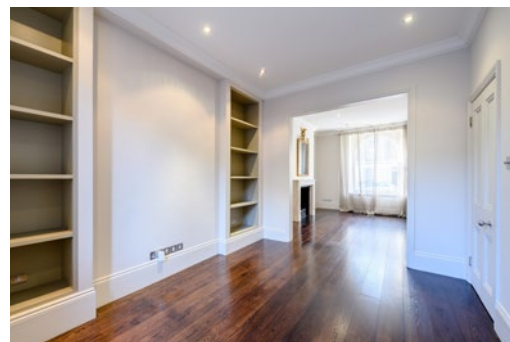
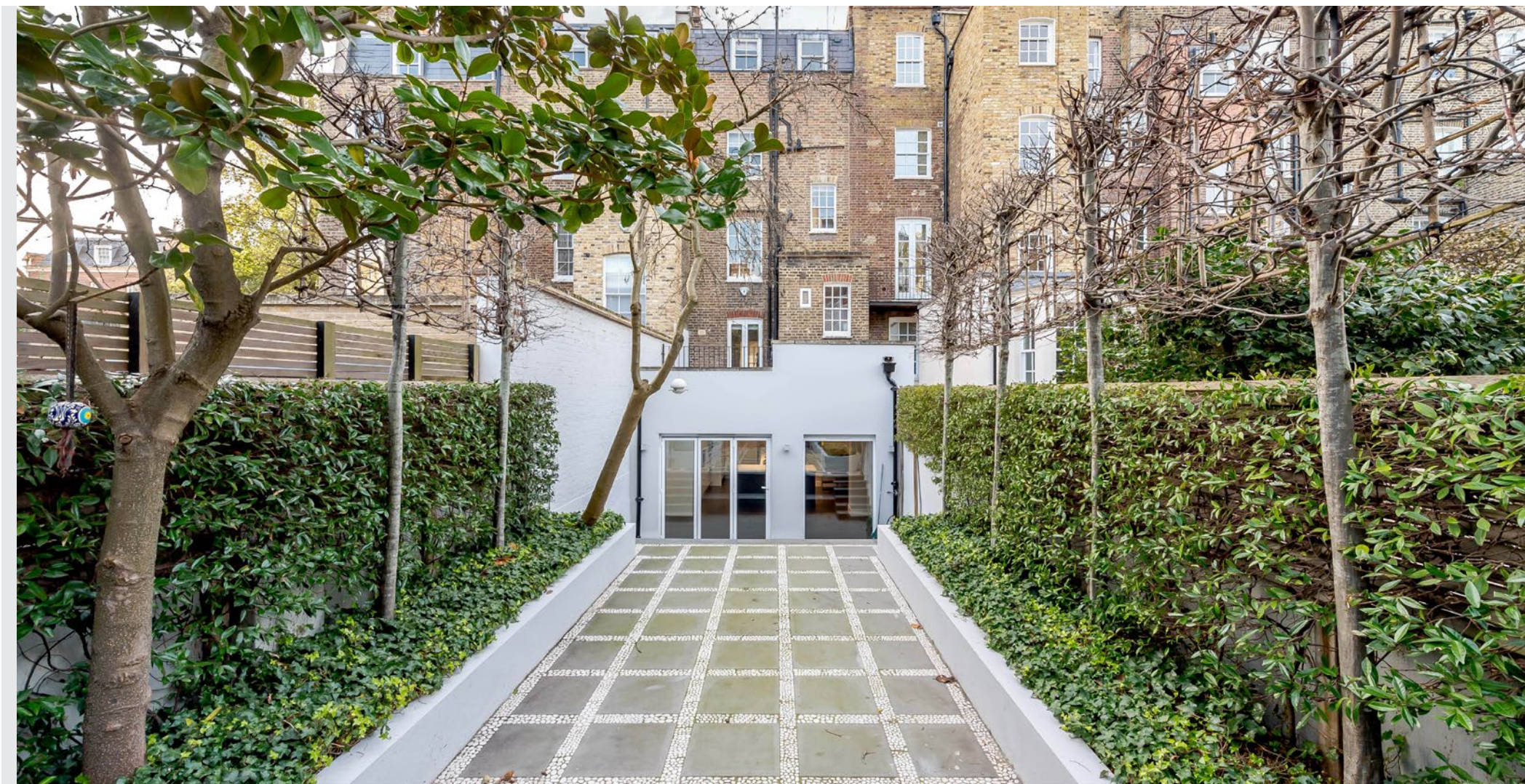
Tenure: Freehold

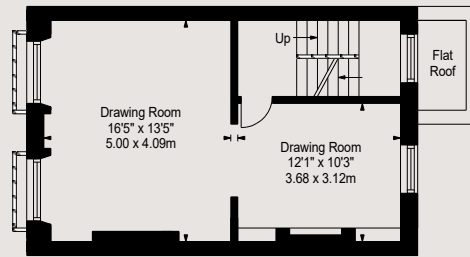
Local Authority: City of Westminster

Council Tax: Band H

Price: £6,000,000





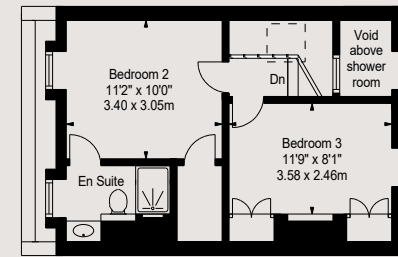


First Floor

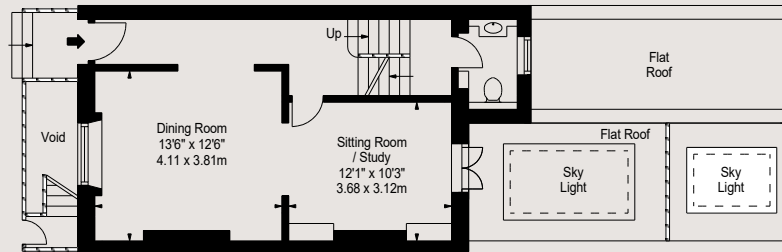
EATON TERRACE, SW1W

Approx. Gross Internal Area *
2,616 Ft² - 243.03 M²

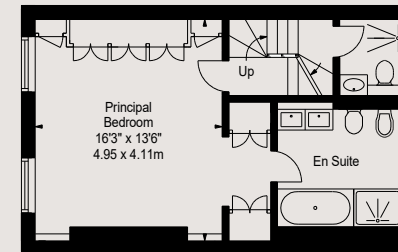
Illustration For Identification Purposes Only, Not to Scale
*As Defined by NICE - Code of Measuring Practice
Copyright © BluePrint Floorplans Ltd. 2023
info@blueprintfloorplans.co.uk



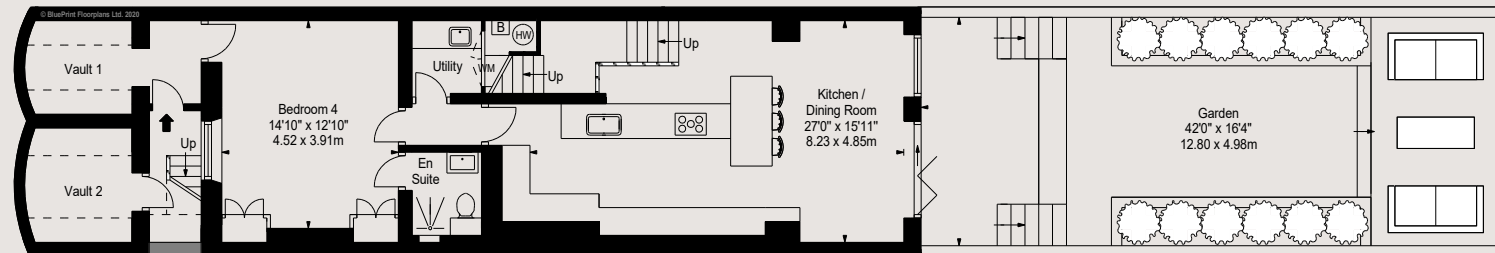
Third Floor



Ground Floor



Second Floor



Lower Ground Floor

Knightsbridge & Belgravia

66 Sloane Street, London SW1X 9SH

020 7235 9959

knightsbridge@struttandparker.com

IMPORTANT NOTICE: Strutt & Parker gives notice that: 1. These particulars do not constitute an offer or contract or part thereof. 2. All descriptions, photographs and plans are for guidance only and should not be relied upon as statements or representations of fact. All measurements are approximate and not necessarily to scale. Any prospective purchaser must satisfy themselves of the correctness of the information within the particulars by inspection or otherwise. 3. Strutt & Parker does not have any authority to give any representations or warranties whatsoever in relation to this property (including but not limited to planning/building regulations), nor can it enter into any contract on behalf of the Vendor. 4. Strutt & Parker does not accept responsibility for any expenses incurred by prospective purchasers in inspecting properties which have been sold, let or withdrawn. 5. We are able to refer you to SPF Private Clients Limited ("SPF") for mortgage broking services, and to Alexander James Interiors ("AJI"), an interior design service. Should you decide to use the services of SPF, we will receive a referral fee from them of 25% of the aggregate of the fee paid to them by you for the arrangement of a mortgage and any fee received by them from the product provider. Should you decide to use the services of AJI, we will receive a referral fee of 10% of the net income received by AJI for the services they provide to you. 6. If there is anything of particular importance to you, please contact this office and Strutt & Parker will try to have the information checked for you. Photographs taken October 2023. Particulars prepared October 2023. Strutt & Parker is a trading style of BNP Paribas Real Estate Advisory & Property Management UK Limited.