



Ebury Street, Belgravia SW1W

Ebury Street, Belgravia, SW1W

Sitting Area | Dining area | Kitchen | Principal bedroom with dressing room & en-suite shower room | Two further bedrooms | Lift | 24-hour porter | EPC rating C

A stylishly appointed three bedroom apartment, with two bathrooms, situated on the fourth floor (with lift) of this brilliantly run building in central Belgravia.

The property has been presented to a high standard and benefits from a lift and 24-hour portorage.

Terms

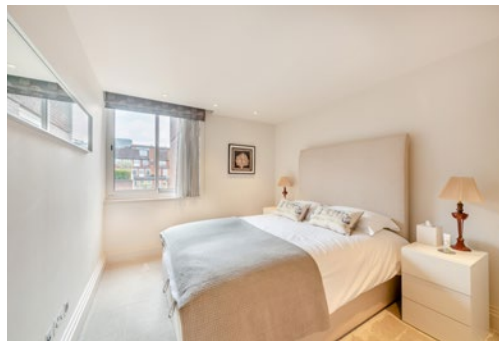
Tenure: Share of Freehold

Service Charge: Circa £8,200 per annum

Local Authority: Westminster City

Council Tax: Band G

Asking Price: £2,500,000



Floorplans
Flat internal area 1,206 sq ft (112 sq m)
For identification purposes only.



Fourth Floor

The position & size of doors, windows, appliances and other features are approximate only.
© ehouse. Unauthorised reproduction prohibited. Drawing ref. dig/8583778/KKM

Knightsbridge & Belgravia

66 Sloane Street, London SW1X 9SH

020 7235 9959

knightsbridge@struttandparker.com

IMPORTANT NOTICE: Strutt & Parker gives notice that: 1. These particulars do not constitute an offer or contract or part thereof. 2. All descriptions, photographs and plans are for guidance only and should not be relied upon as statements or representations of fact. All measurements are approximate and not necessarily to scale. Any prospective purchaser must satisfy themselves of the correctness of the information within the particulars by inspection or otherwise. 3. Strutt & Parker does not have any authority to give any representations or warranties whatsoever in relation to this property (including but not limited to planning/building regulations), nor can it enter into any contract on behalf of the Vendor. 4. Strutt & Parker does not accept responsibility for any expenses incurred by prospective purchasers in inspecting properties which have been sold, let or withdrawn. 5. We are able to refer you to SPF Private Clients Limited ("SPF") for mortgage broking services, and to Alexander James Interiors ("AJI"), an interior design service. Should you decide to use the services of SPF, we will receive a referral fee from them of 25% of the aggregate of the fee paid to them by you for the arrangement of a mortgage and any fee received by them from the product provider. Should you decide to use the services of AJI, we will receive a referral fee of 10% of the net income received by AJI for the services they provide to you. 6. If there is anything of particular importance to you, please contact this office and Strutt & Parker will try to have the information checked for you. Photographs taken February 2024. Particulars prepared February 2024. Strutt & Parker is a trading style of BNP Paribas Real Estate Advisory & Property Management UK Limited.