



ELIZABETH STREET · BELGRAVIA · SW1



RARE TO THE MARKET, A SUPERB DOUBLE FRONTED LOW BUILT STUCCO FRONTED HOUSE WITH A PARTICULARLY WIDE 45FT FAÇADE, SITUATED IN THE HEART OF BELGRAVIA.

This elegant freehold house has an ideal layout, spanning only four floors, with a large drawing room and study accessed either side of the entrance hall, a substantial principal bedroom suite on the first floor with four further bedroom suites and a large dining room and kitchen on the lower ground floor. The house has an open staircase with a double height ceiling void at the lower ground floor and a separate access to Boscobel Place.









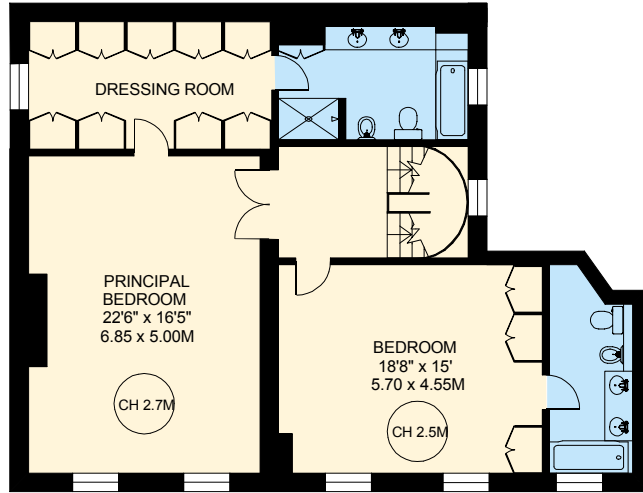
Elizabeth Street is one of Belgravia's prettiest streets with a vibrant mix of boutique shops and local restaurants, including within Eccleston Yards, within 0.3 miles of Sloane Square. The recreational gardens and tennis court of Belgrave Square are within 0.4 miles (access by separate arrangement).

- Entrance hall
- Drawing room
- Reception room
- Principal bedroom with en suite bathroom and dressing room
- Four further bedroom suites
- Utility room
- Storage
- Vaults
- Access to Belgrave Square gardens (by separate arrangement)

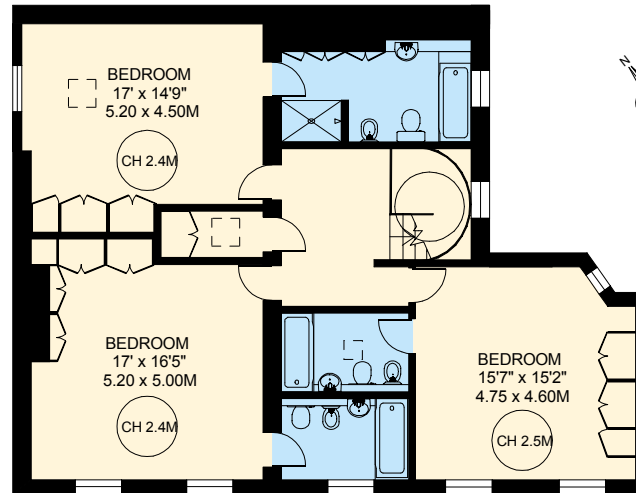


APPROX. INTERNAL FLOOR AREA  
 4,828 SQ. FT. / 448.5 SQ. M.  
 PLUS VAULTS STORAGE 108 SQ. FT. / 10 SQ. M.

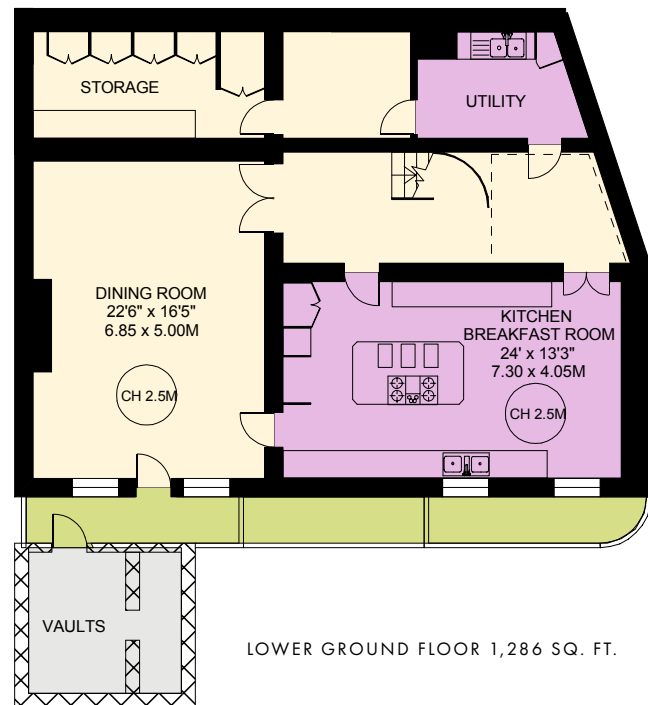
TOTAL AREA INCLUDING VAULTS  
 4,936 SQ. FT. / 458.5 SQ. M.



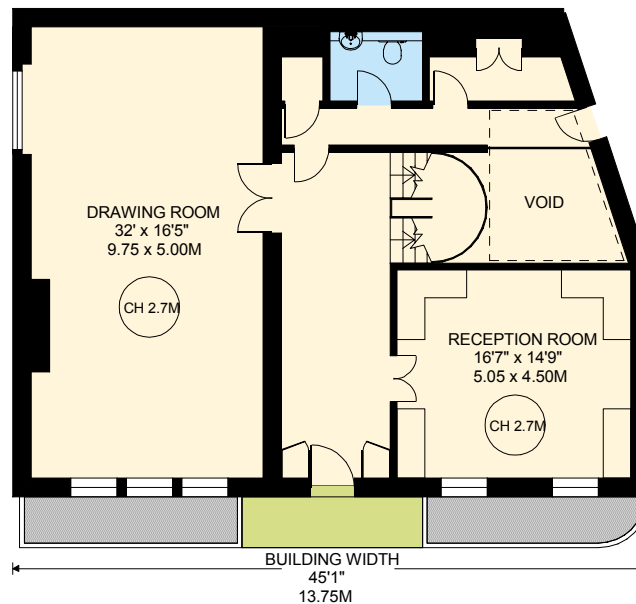
FIRST FLOOR 1,156 SQ. FT.



SECOND FLOOR 1,164 SQ. FT.



LOWER GROUND FLOOR 1,286 SQ. FT.



GROUND FLOOR 1,222 SQ. FT.

TENURE Freehold  
 LOCAL AUTHORITY City of Westminster  
 EPC RATING D  
 COUNCIL TAX H  
 ASKING PRICE £15,000,000

[struttandparker.com](http://struttandparker.com)

Over 50 offices across  
 England and Scotland,  
 including prime  
 Central London



**Chelsea Office**  
 43 Cadogan Street, London SW3 2PR  
**+44 (0)20 7225 3866**  
[chelsea@struttandparker.com](mailto:chelsea@struttandparker.com)

**IMPORTANT NOTICE**  
 Strutt & Parker gives notice that: 1. These particulars do not constitute an offer or contract or part thereof. 2. All descriptions, photographs and plans are for guidance only and should not be relied upon as statements or representations of fact. All measurements are approximate and not necessarily to scale. Any prospective purchaser must satisfy themselves of the correctness of the information within the particulars by inspection or otherwise. 3. Strutt & Parker does not have any authority to give any representations or warranties whatsoever in relation to this property (including but not limited to planning/building regulations), nor can it enter into any contract on behalf of the Vendor. 4. Strutt & Parker does not accept responsibility for any expenses incurred by prospective purchasers in inspecting properties which have been sold, let or withdrawn. 5. We are able to refer you to SPJ Private Clients Limited ("SPJ") for mortgage broking services, and to Alexander James Interiors ("AJI"), an interior design service. Should you decide to use the services of SPJ, we will receive a referral fee from them of 25% of the aggregate of the fee paid to them by you for the arrangement of a mortgage and any fee received by them from the product provider. Should you decide to use the services of AJI, we will receive a referral fee of 10% of the net income received by AJI for the services they provide to you. 6. If there is anything of particular importance to you, please contact this office and Strutt & Parker will try to have the information checked for you. Photographs taken June 2024, Particulars prepared September 2024. Strutt & Parker is a trading style of BNP Paribas Real Estate Advisory & Property Management UK Limited