

# Elvaston Place

London, SW7



## A well appointed two bedroom apartment for sale on a prime residential street in the heart of South Kensington.

A stylish and beautifully presented two bedroom apartment located on the third floor (accessible via lift) of an elegant Victorian building on a prestigious address within South Kensington.



**1 RECEPTION ROOM**



**2 BEDROOMS**



**2 BATHROOMS**



**SHARE OF FREEHOLD**



**615 SQ FT**



**ASKING PRICE  
£975,000**



### The property

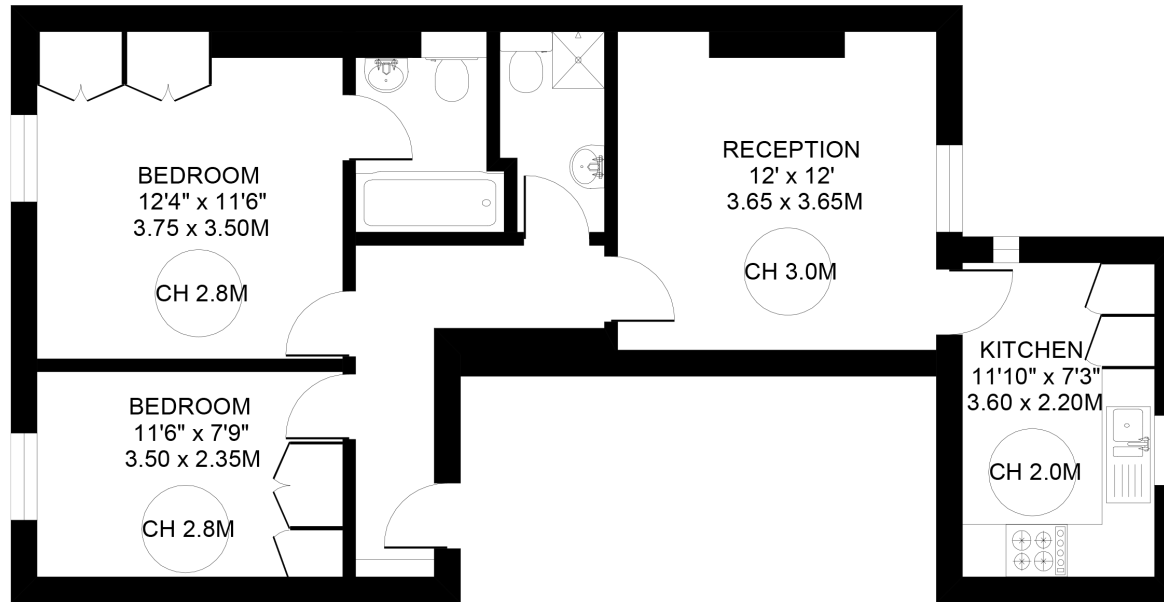
Elvaston Place benefits from wooden flooring throughout, the accommodation includes a south facing reception room with high ceilings. A modern kitchen benefitting from all modern appliances one could expect adjoins the reception space. Down the hall a large principal bedroom can be found with ample storage as well as an en-suite bathroom. The second bedroom is well proportioned and has use of a second shower room found off the hallway.

### Location

Elvaston Place is a highly sought after and broad street that is situated centrally amongst the hubbub of the local area. The Victoria & Albert and Natural History Museums as well as the famous Royal Albert Hall are all very close by. The property is equidistant between Gloucester Road and South Kensington Stations, which are serviced by the District, Circle and Piccadilly lines.







THIRD FLOOR

## Floorplans

Gross internal area 615 sq ft (57.1 sq m)

For identification purposes only.

## General

Tenure: Share of Freehold 950 years

Local Authority: The Royal Borough of Kensington and Chelsea

Service Charge: £1,057 per quarter

Ground Rent: Peppercorn

Council Tax: Band E

EPC Rating: D

Parking: Residents' parking

Broadband: Yes

**IMPORTANT NOTICE:** Strutt & Parker gives notice that: 1. These particulars do not constitute an offer or contract or part thereof. 2. All descriptions, photographs and plans are for guidance only and should not be relied upon as statements or representations of fact. All measurements are approximate and not necessarily to scale. Any prospective purchaser must satisfy themselves of the correctness of the information within the particulars by inspection or otherwise. 3. Strutt & Parker does not have any authority to give any representations or warranties whatsoever in relation to this property (including but not limited to planning/building regulations), nor can it enter into any contract on behalf of the Vendor. 4. Strutt & Parker does not accept responsibility for any expenses incurred by prospective purchasers in inspecting properties which have been sold, let or withdrawn. 5. We are able to refer you to SPF Private Clients Limited ("SPF") for mortgage broking services, and to Alexander James Interiors ("AJI"), an interior design service. Should you decide to use the services of SPF, we will receive a referral fee from them of 25% of the aggregate of the fee paid to them by you for the arrangement of a mortgage and any fee received by them from the product provider. Should you decide to use the services of AJI, we will receive a referral fee of 10% of the net income received by AJI for the services they provide to you. 6. If there is anything of particular importance to you, please contact this office and Strutt & Parker will try to have the information checked for you. Photographs taken January 2025. Particulars prepared February 2025. Strutt & Parker is a trading style of BNP Paribas Real Estate Advisory & Property Management UK Limited

## South Kensington

90 Old Brompton Road, London, SW7 3LQ

020 7581 7000

southken@struttandparker.com

struttandparker.com



@struttandparker

Over 50 offices across England and Scotland,  
including Prime Central London

For the finer things in property.

