



# HALSEY STREET

---

CHELSEA SW3



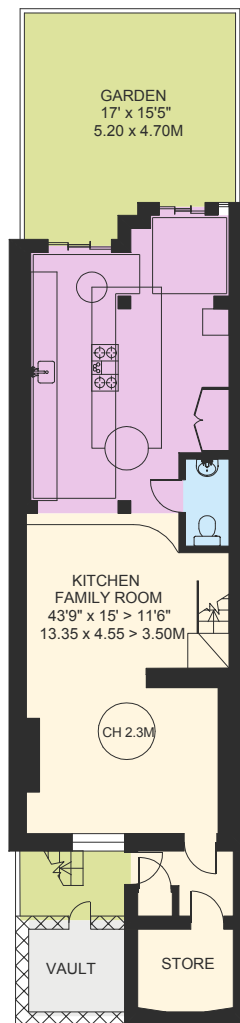
AN ATTRACTIVE GRADE II LISTED FOUR BEDROOM FAMILY HOUSE, OFFERING BRIGHT WELL-PLANNED LIVING ACCOMMODATION LEADING ONTO A PRETTY 17 FT GARDEN.



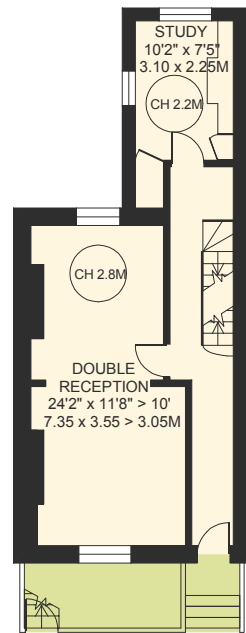
Halsey Street is a popular wide street located between Cadogan Street and Milner Street, perfectly placed within rough equal distance of Sloane Square, South Kensington and Knightsbridge.



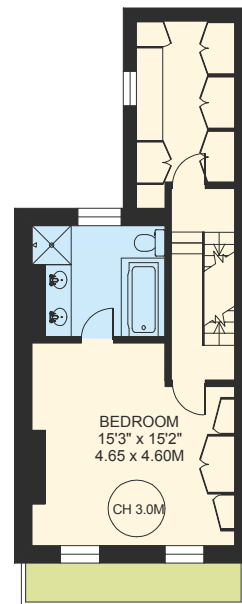




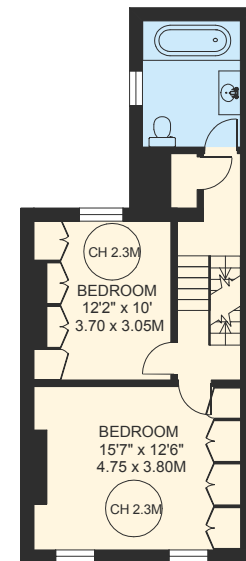
**LOWER GROUND FLOOR**  
766 SQ.FT.



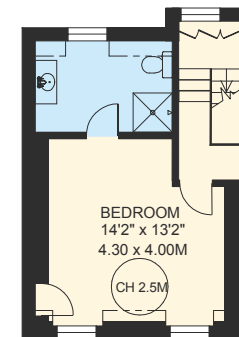
**GROUND FLOOR**  
482 SQ.FT.



**FIRST FLOOR**  
482 SQ.FT.



**SECOND FLOOR**  
497 SQ.FT.



**THIRD FLOOR**  
313 SQ.FT.

**APPROXIMATE INTERNAL FLOOR AREA**

2,540 Sq Ft / 236.0 Sq M

**PLUS VAULT**

44 Sq Ft / 4.1 Sq M

Illustration For Identification Only. Not to Scale

**STRUTT & PARKER**

BNP PARIBAS GROUP

TENURE Freehold  
LOCAL AUTHORITY The Royal Borough of Kensington and Chelsea  
EPC RATING C

ASKING PRICE £4,250,000  
COUNCIL TAX H

**Chelsea Office**

43 Cadogan Street, London SW3 2PR

**+44 (0)20 7225 3866**

chelsea@struttandparker.com

Over 50 offices across England and Scotland, including Prime Central London

**IMPORTANT NOTICE**

Strutt & Parker gives notice that: 1. These particulars do not constitute an offer or contract or part thereof. 2. All descriptions, photographs and plans are for guidance only and should not be relied upon as statements or representations of fact. All measurements are approximate and not necessarily to scale. Any prospective purchaser must satisfy themselves of the correctness of the information within the particulars by inspection or otherwise. 3. Strutt & Parker does not have any authority to give any representations or warranties whatsoever in relation to this property (including but not limited to planning/building regulations), nor can it enter into any contract on behalf of the Vendor. 4. Strutt & Parker does not accept responsibility for any expenses incurred by prospective purchasers in inspecting properties which have been sold, let or withdrawn. 5. We are able to refer you to SPF Private Clients Limited ("SPF") for mortgage broking services, and to Alexander James Interiors ("AJI"), an interior design service. Should you decide to use the services of SPF, we will receive a referral fee from them of 25% of the aggregate of the fee paid to them by you for the arrangement of a mortgage and any fee received by them from the product provider. Should you decide to use the services of AJI, we will receive a referral fee of 10% of the net income received by AJI for the services they provide to you. 6. If there is anything of particular importance to you, please contact this office and Strutt & Parker will try to have the information checked for you. Photographs taken February 2024. Particulars prepared February 2024. Strutt & Parker is a trading style of BNP Paribas Real Estate Advisory & Property Management UK Limited