



Harrow Road, Kensal Rise, NW10

For the finer things in property.

**STRUTT
& PARKER**

BNP PARIBAS GROUP 

Harrow Road, Kensal Rise, NW10

An outstanding two bedroom house with south facing garden.

A wonderfully presented Victorian house with planning permission to extend to create a third and fourth bedroom as well as a terrace. The house features a walled south facing front garden, a bright and airy double reception room, plus large kitchen/dining room. Two bedrooms both with ample built in wardrobes and a large family bathroom.

The property is close to the shops, cafes and restaurants of Kensal Rise, with the green space of Queens Park nearby. Ladbroke Grove, Portobello Road and Notting Hill are also within easy reach.

Double reception room | Kitchen/dining room
Two bedrooms | Bathroom | South facing garden | EPC Rating D

Planning permission ([https:// pa.brent.gov.uk/online-applications/application\[1\]Details.do?keyVal=DCAPR_163493&activeTab=- summary](https://pa.brent.gov.uk/online-applications/application[1]Details.do?keyVal=DCAPR_163493&activeTab=-summary))

Planning: Prospective purchasers are advised that they should make their own enquiries of the local planning authority

Terms

Tenure: Freehold

Council Tax: Band C

Local Authority: Brent

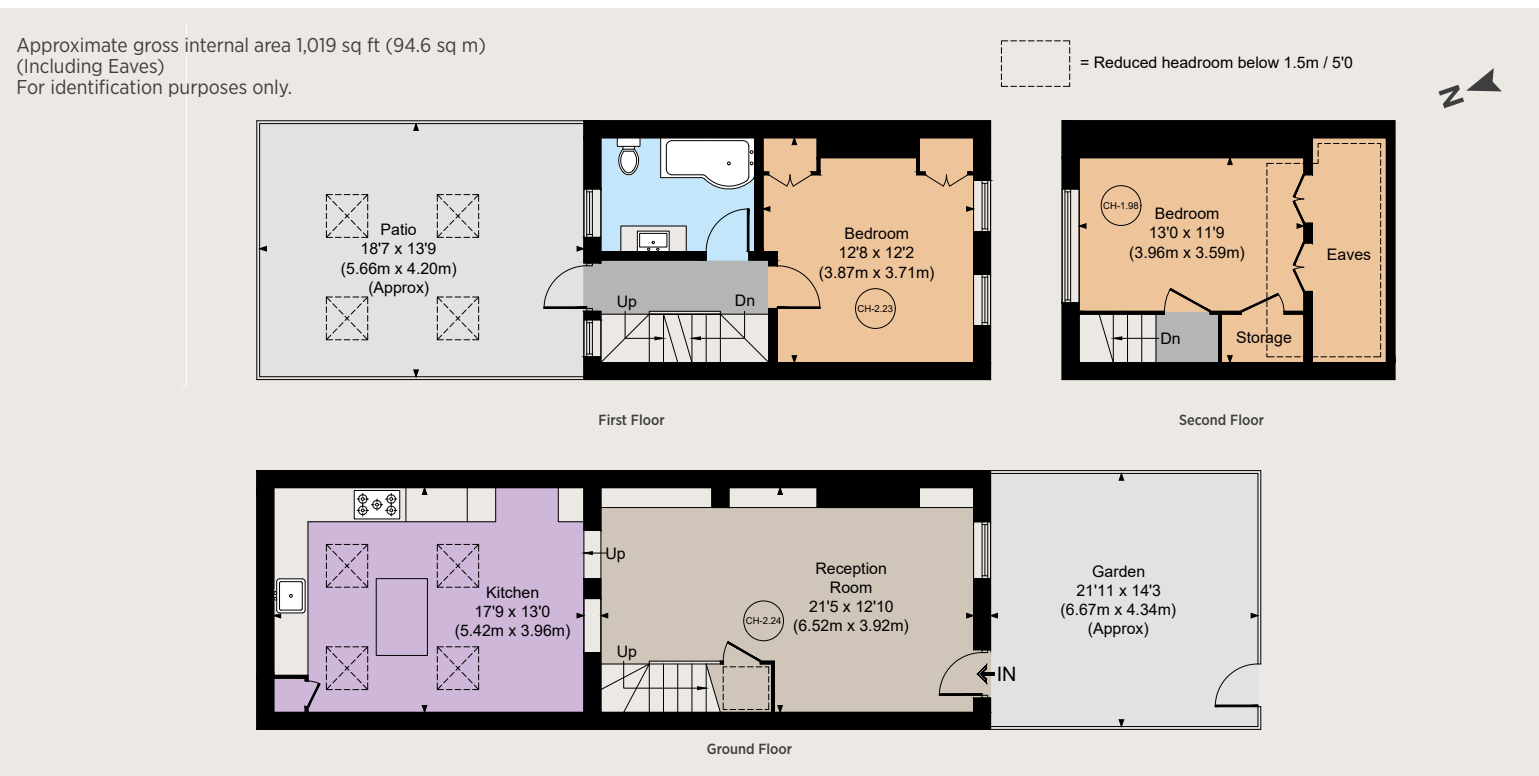
Asking Price: £850,000

303 Westbourne Grove, London, W11 2QA

020 7221 1111

nottinghill@struttandparker.com

struttandparker.com



IMPORTANT NOTICE

Strutt & Parker gives notice that: 1. These particulars do not constitute an offer or contract or part thereof. 2. All descriptions, photographs and plans are for guidance only and should not be relied upon as statements or representations of fact. All measurements are approximate and not necessarily to scale. Any prospective purchaser must satisfy themselves of the correctness of the information within the particulars by inspection or otherwise. 3. Strutt & Parker does not have any authority to give any representations or warranties whatsoever in relation to this property (including but not limited to planning/building regulations), nor can it enter into any contract on behalf of the Vendor. 4. Strutt & Parker does not accept responsibility for any expenses incurred by prospective purchasers in inspecting properties which have been sold, let or withdrawn. 5. We are able to refer you to SPF Private Clients Limited ("SPF") for mortgage broking services, and to Alexander James Interiors ("AJI"), an interior design service. Should you decide to use the services of SPF, we will receive a referral fee from them of 25% of the aggregate of the fee paid to them by you for the arrangement of a mortgage and any fee received by them from the product provider. Should you decide to use the services of AJI, we will receive a referral fee of 10% of the net income received by AJI for the services they provide to you. 6. If there is anything of particular importance to you, please contact this office and Strutt & Parker will try to have the information checked for you. Photographs taken October 2024. Particulars prepared October 2024. Strutt & Parker is a trading style of BNP Paribas Real Estate Advisory & Property Management UK Limited.



Over 50 offices across England and Scotland,
including Prime Central London

For the finer things in property.

