



Hartismere Road, Fulham, SW6

For the finer things in property.

**STRUTT  
& PARKER**

BNP PARIBAS GROUP 

## Hartismere Road, Fulham, SW6

An exceptional five bedroom end of terrace family house, boasting stunning interiors and unique features.

Two reception rooms | Dining room | Three bedrooms with en suite bathrooms | Two bedrooms with en suite shower rooms | Further bedroom | Cloakroom | Garden | Patio  
EPC Rating C

An outstanding and unique five-bedroom end of terrace family house in Fulham. The property has been refurbished and is presented to a high specification with exceptional entertaining space and an abundance of natural light throughout.

Arranged over four floors, the ground floor benefits from a stunning kitchen overlooking one of two reception rooms with floor to ceiling glass doors leading onto the manicured patio garden. Stairs leading to the lower ground floor provide access to the second reception/family room, WC, separate utility room and a large double bedroom with built in wardrobes and an en suite bathroom. The remaining four double bedrooms are arranged over the first and second floors with the principal bedroom providing ample built in wardrobes and a large en suite bathroom with his and her sinks.

The house, which was designed by an award-winning architect, has been finished beautifully with modern fixtures and fittings throughout, including underfloor heating, making it a desirable family home.

Hartismere Road is conveniently located for both Fulham Broadway and Parsons Green, with a multitude of shops and restaurants available on Fulham Road and Fulham Broadway.

### Terms

**Tenure:** Freehold

**Council Tax:** Band G

**Local Authority:** The London Borough of Hammersmith and Fulham

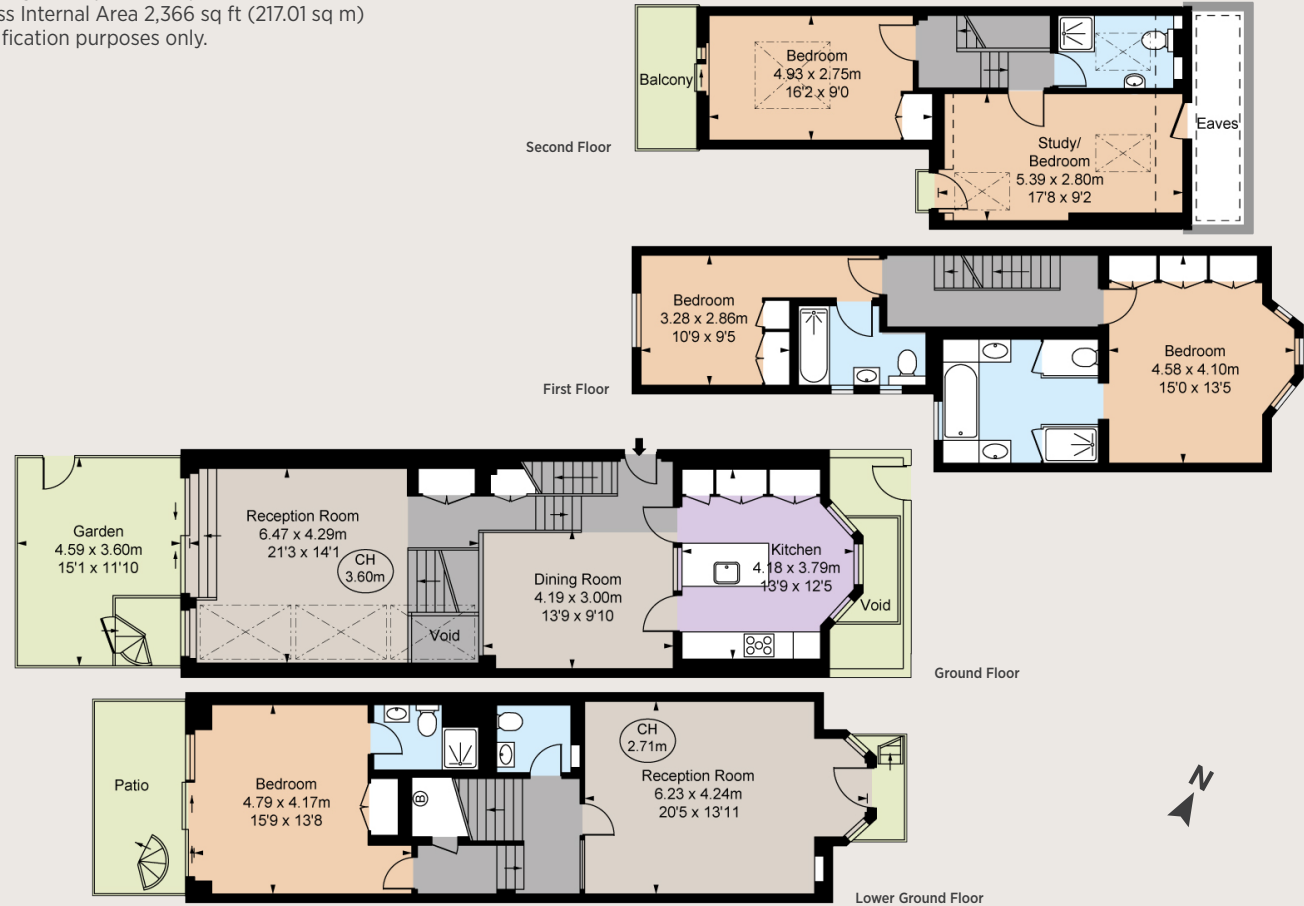
**Asking Price:** £2,250,000







Gross Internal Area 2,277 sq ft (211.53 sq m)  
 Eaves Storage 59 sq ft (5.48sq m)  
 Total Gross Internal Area 2,366 sq ft (217.01 sq m)  
 For identification purposes only.



## Fulham

701 Fulham Road, London SW6 5UL

020 7731 7100

fulham@struttandparker.com

### IMPORTANT NOTICE

Strutt & Parker gives notice that: 1. These particulars do not constitute an offer or contract or part thereof. 2. All descriptions, photographs and plans are for guidance only and should not be relied upon as statements or representations of fact. All measurements are approximate and not necessarily to scale. Any prospective purchaser must satisfy themselves of the correctness of the information within the particulars by inspection or otherwise. 3. Strutt & Parker does not have any authority to give any representations or warranties whatsoever in relation to this property (including but not limited to planning/building regulations), nor can it enter into any contract on behalf of the Vendor. 4. Strutt & Parker does not accept responsibility for any expenses incurred by prospective purchasers in inspecting properties which have been sold, let or withdrawn. 5. We are able to refer you to SPF Private Clients Limited ("SPF") for mortgage broking services, and to Alexander James Interiors ("AJI"), an interior design service. Should you decide to use the services of SPF, we will receive a referral fee from them of 25% of the aggregate of the fee paid to them by you for the arrangement of a mortgage and any fee received by them from the product provider. Should you decide to use the services of AJI, we will receive a referral fee of 10% of the net income received by AJI for the services they provide to you. 6. If there is anything of particular importance to you, please contact this office and Strutt & Parker will try to have the information checked for you. Photographs taken July 2024. Particulars prepared July 2024 Strutt & Parker is a trading style of BNP Paribas Real Estate Advisory & Property Management UK Limited.



Over 50 offices across England and Scotland,  
 including Prime Central London

For the finer things in property.

