



HASKER STREET

CHELSEA SW3



A PRETTY VICTORIAN MID-TERRACED HOUSE, WHICH HAS POTENTIAL TO BE EXTENDED, WITH A WEST FACING COURTYARD GARDEN SITUATED ON A QUIET ONE-WAY STREET OFF WALTON STREET.



This attractive house has potential to be extended with a mansard roof extension and closet wing (subject to consent), which gives an incoming purchaser a rare opportunity to create a three-bedroom house to their own specification - this house is not a listed building.



Hasker Street is located on the border of Knightsbridge and Chelsea, in a quiet residential area between Mossop Street and Walton Street. Transport links include nearby South Kensington and Sloane Square (a choice between Piccadilly, District and Circle Lines).

APPROXIMATE INTERNAL FLOOR AREA 1,226 Sq Ft / 113.8 Sq M
INCLUDING INTERNAL VAULT UNDER 1.5M 35 Sq Ft / 3.2 Sq M
EXCLUDING VAULT 35 Sq Ft / 3.2 Sq M



Illustration For Identification Only. Not to Scale

TENURE: Freehold

EPC RATING: Band E

COUNCIL TAX: Band H

LOCAL AUTHORITY: The Royal Borough
of Kensington and Chelsea

PRICE: £2,700,000

**STRUTT
& PARKER**

BNP PARIBAS GROUP

Chelsea Office

43 Cadogan Street, London SW3 2PR

+44 (0)20 7225 3866

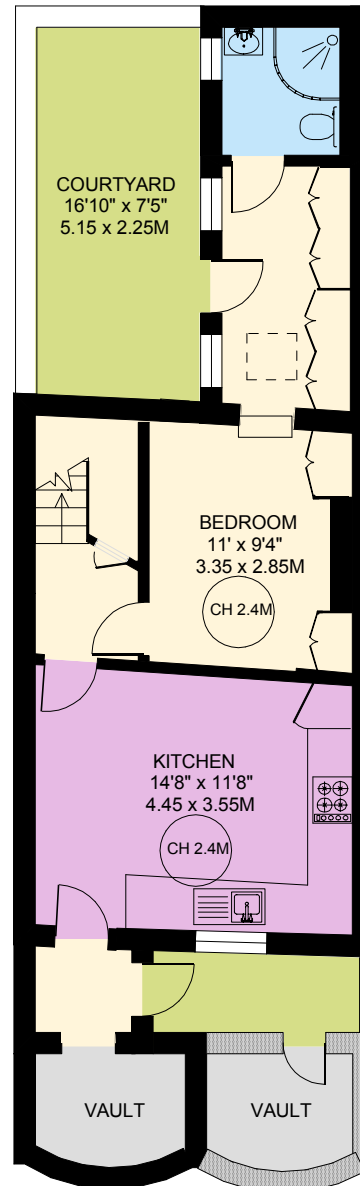
chelsea@struttandparker.com

Over 50 offices across England
and Scotland, including Prime
Central London

IMPORTANT NOTICE

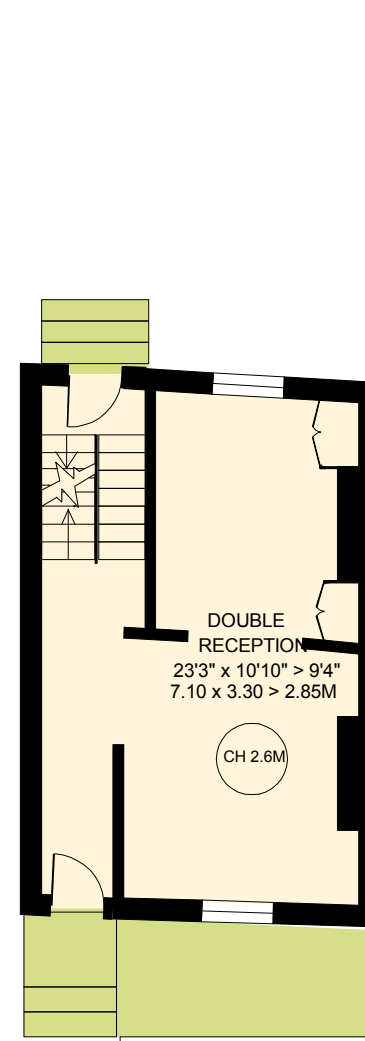
Strutt & Parker gives notice that: 1. These particulars do not constitute an offer or contract or part thereof. 2. All descriptions, photographs and plans are for guidance only and should not be relied upon as statements or representations of fact. All measurements are approximate and not necessarily to scale. Any prospective purchaser must satisfy themselves of the correctness of the information within the particulars by inspection or otherwise. 3. Strutt & Parker does not have any authority to give any representations or warranties whatsoever in relation to this property (including but not limited to planning/building regulations), nor can it enter into any contract on behalf of the Vendor. 4. Strutt & Parker does not accept responsibility for any expenses incurred by prospective purchasers in inspecting properties which have been sold, let or withdrawn. 5. We are able to refer you to SPF Private Clients Limited ("SPF") for mortgage broking services, and to Alexander James Interiors ("AJI"), an interior design service. Should you decide to use the services of SPF, we will receive a referral fee from them of 25% of the aggregate of the fee paid to them by you for the arrangement of a mortgage and any fee received by them from the product provider. Should you decide to use the services of AJI, we will receive a referral fee of 10% of the net income received by AJI for the services they provide to you. 6. If there is anything of particular importance to you, please contact this office and Strutt & Parker will try to have the information checked for you. Photographs taken December 2023. Particulars prepared February 2024. Strutt & Parker is a trading style of BNP Paribas Real Estate Advisory & Property Management UK Limited

Brochure by TwentyOneFifty Tel: 020 8778 2150



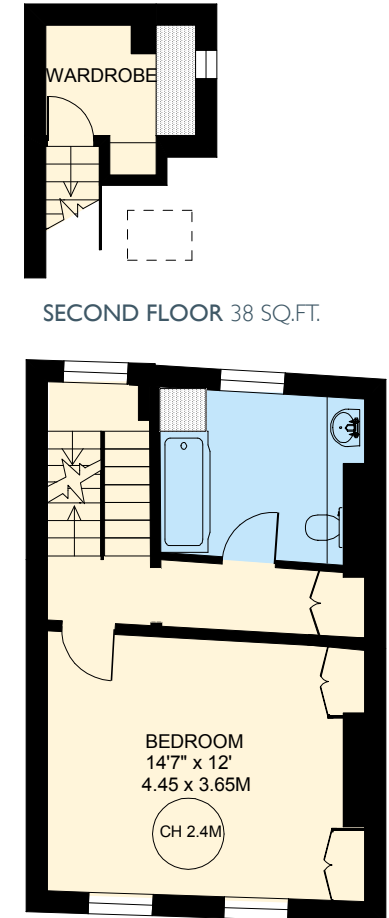
LOWER GROUND FLOOR

471 SQ.FT.



RAISED GROUND FLOOR

341 SQ.FT.



FIRST FLOOR

341 SQ.FT.

SECOND FLOOR 38 SQ.FT.