



11 Hawks Lane, Canterbury, Kent

For the finer things in property.





11 Hawks Lane Canterbury, Kent CT1 2NU

A Grade II listed terraced property in the heart of the cathedral city of Canterbury

City centre location, Canterbury West station 0.5 mile (London St Pancras from 56 minutes), A2 1 mile, Whitstable 8.2 miles, Port of Dover 18 miles, Eurotunnel 19 miles, Central London 60 miles

Sitting room | Kitchen/dining room | Cellar | 3 Bedrooms | Family bathroom | Loft space | Rear courtyard | EPC rating D

The property

Rich with character, this charming Grade II listed property has historic ties and period features, such as the beams and large Georgian windows found throughout.

The front door opens to a generous sitting room with an original fireplace (that could be reinstated), and a kitchen/dining room.

The first floor houses the large principal bedroom, with views over the city rooftops, and the family bathroom. The second floor provides two further bedrooms.

The house also has a large cellar and loft space, offering potential for conversion, subject to any necessary consents..

Outside

The property's classic symmetrical Georgian architecture, with painted brick and timber-framed sash windows, complements the medieval city street. Original pilasters surround the exterior doorway that leads to the entrance of the two neighbouring properties.


There is a small courtyard area just outside the rear door.

Canterbury

2 St Margaret's Street, Canterbury, Kent CT1 2SL

01227 473700

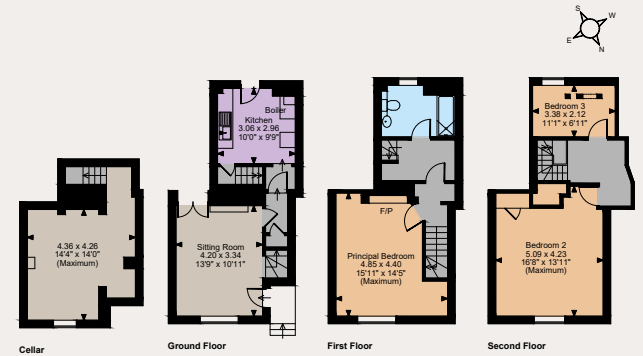
canterbury@struttandparker.com
struttandparker.com

 @struttandparker

 /struttandparker

50 offices across England and Scotland, including Prime Central London

Hawks Lane, Canterbury, Kent
Internal area 1,265 sq ft (118 sq m)
For identification purposes only.



The position & size of doors, windows, appliances and other features are approximate only.
© ehouse. Unauthorised reproduction prohibited. Drawing ref. dg/861828/SS

Location

The property is situated in the centre of historic Canterbury, moments from an extensive selection of shops and leisure amenities, including the Marlowe Theatre. The city is home to an array of educational facilities in both independent and state sectors. The striking green expanses of the Kent Downs are within easy reach.

Canterbury has two stations with train services to London Victoria, Charing Cross and Cannon Street. The High-Speed service to London St Pancras from Canterbury West takes just under an hour. Road links in the area are excellent, with the A28, A2 and M2 providing easy access to London and the coast. The area has good access to the Continent via the Port of Dover and Eurotunnel.

Directions

From Strutt & Parker's Canterbury office: Walk east on St Margaret's Street for approximately 100m. Turn left on to Hawk's Lane. Continue for 300m and the property will be found on the left.

General

Local Authority: Canterbury City Council

Services: All mains services; gas heating

Council Tax: Band E

Tenure: Freehold

Planning: Prospective purchasers should make their own enquiries of Canterbury City Council

Parking: Resident parking permits for use in local car parks can be obtained from Canterbury City Council - information available from the council's website

Guide Price: £350,000

IMPORTANT NOTICE: Strutt & Parker gives notice that: 1. These particulars do not constitute an offer or contract or part thereof. 2. All descriptions, photographs and plans are for guidance only and should not be relied upon as statements or representations of fact. All measurements are approximate and not necessarily to scale. Any prospective purchaser must satisfy themselves of the correctness of the information within the particulars by inspection or otherwise. 3. Strutt & Parker does not have any authority to give any representations or warranties whatsoever in relation to this property (including but not limited to planning/building regulations), nor can it enter into any contract on behalf of the Vendor. 4. Strutt & Parker does not accept responsibility for any expenses incurred by prospective purchasers in inspecting properties which have been sold, let or withdrawn. 5. We are able to refer you to SPF Private Clients Limited ("SPF") for mortgage broking services, and to Alexander James Interiors ("AJI"), an interior design service. Should you decide to use the services of SPF, we will receive a referral fee from them of 25% of the aggregate of the fee paid to them by you for the arrangement of a mortgage and any fee received by them from the product provider. Should you decide to use the services of AJI, we will receive a referral fee of 10% of the net income received by AJI for the services they provide to you. 6. If there is anything of particular importance to you, please contact this office and Strutt & Parker will try to have the information checked for you. Photographs taken September 2024. Particulars prepared September 2024. Strutt & Parker is a trading style of BNP Paribas Real Estate Advisory & Property Management UK Limited.



For the finer things in property.

