



Wickham Lodge, 73 High Street, Aylesford, Kent

For the finer things in property.

**STRUTT  
& PARKER**

BNP PARIBAS GROUP 

# Wickham Lodge

## 73 High Street

### Aylesford

#### Kent

#### ME20 7AY

Enjoying a Georgian facade this Grade II listed gem has an unparalleled view of the historic River Medway and includes a private boat launch/slipway

0.9 miles to Aylesford Station with journey times of under 1 hour to London St Pancras

Reception hall | Sitting room | Dining room  
Kitchen | Breakfast room | Study | Boot room  
Bedroom 5 with en suite | Cellar/utility room  
Principal bedroom suite | 3 Further bedrooms  
2 Further bathrooms | Attic room  
Detached cottage: Kitchen/dining room | Sitting room | Bedroom | Bathroom | Shower room

### The Property

Wickham Lodge has a most appealing approach through a wide entrance door into a welcoming wood panelled entrance hall that provides access to the principal rooms with riverside views. The dining room features a charming fireplace with a traditional log burner, creating a warm and inviting atmosphere. The sitting room is equally impressive, with a magnificent inglenook fireplace, an ornately carved bressummer beam above, and another traditional log burner.

Accessed via the kitchen or sitting room a spacious Georgian study offers a quiet and functional workspace that overlooks the river. The kitchen has been tastefully fitted with a solid wood 'Danmar' kitchen, complemented by quartz work surfaces, a butler-style sink, and space for a fridge-freezer and integrated dishwasher. There is also space for a range-style cooker if desired. The adjacent breakfast room,

featuring a Georgian fireplace and fixtures with limestone flooring, adds to the character and charm of the home.

A second study, which can also serve as an occasional fifth bedroom, has a separate en suite with a shower, basin, and WC.

The cellar/utility room provides additional practicality with work surfaces, cupboards, a sink and drainer, and plumbing for a washing machine.

The principal bedroom includes an en suite cloakroom, and there are three further bedrooms, along with two additional bathrooms. An attic room offers flexible space, ideal for storage, a playroom, or a hobby room.

The separate cottage and former coach house add further accommodation, featuring a kitchen/dining room, sitting room, bedroom, bathroom, and shower room.

### Location

Wickham Lodge enjoys a remarkable setting overlooking the river and 13th century medieval bridge. This unique setting is accessible to Maidstone the County Town of Kent and the Medway Towns. The A20 and M20 are both within easy reach.

For commuters, Aylesford Station offers train services to London St Pancras in under an hour. Additionally, mainline stations in Maidstone and Ebbsfleet provide fast connections to the Capital and the Kent coast.

There is a wide choice of schools in the area both in the private and state sectors. Kent still has grammar schools.







## Outside

### The Vines:

A covered seating area nestled beneath lush grape vines. This enchanting space offers a perfect retreat for al fresco dining and relaxing in the shade.

### Front Garden:

Wickham Lodge is approached via a set of wrought iron gates with extensive gravelled driveway. There is a lawned area directly adjoining the river with a slipway suitable to launch a small boat. A large patio affords wonderful river views. Estate fencing alongside the river.

### Rear Gardens:

The gardens are a special feature of the property, wrapping around the front, side and rear, with patios and terraced levels raising up from the house. Spacious shed with covered veranda.

## General

**Local Authority:** Tonbridge and Malling Borough Council

**Services:** Main electric, gas, water and drainage

**Council Tax:** Band G

**Tenure:** Freehold

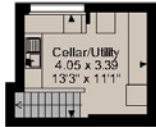
**Guide Price:** £1,600,000



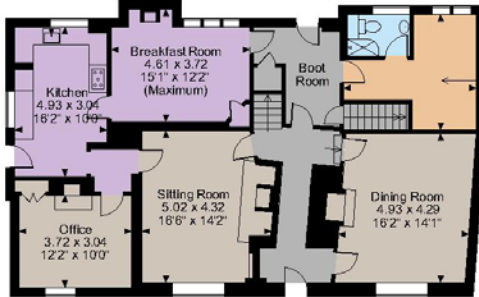




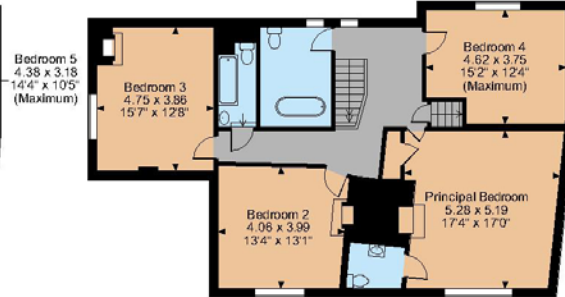
Wickham Lodge, High Street, Aylesford  
 Total internal area 3,627 sq ft (337 sq m)  
 Reduced Head Height 75 sqft (7 sq m)



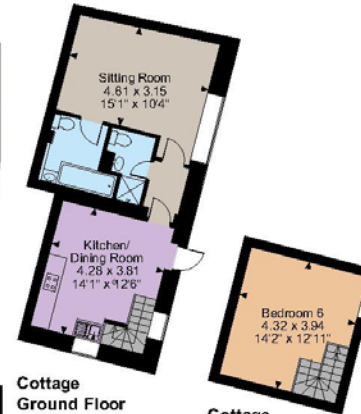
Lower Ground Floor



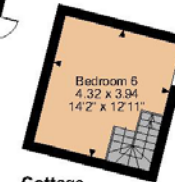
Ground Floor



First Floor



Cottage Ground Floor



Cottage First Floor



Second Floor

The position & size of doors, windows, appliances and other features are approximate only.

□ Denotes restricted head height

© ehouse. Unauthorised reproduction prohibited. Drawing ref. dig/8619196/SS



### Directions

From the village car parks, proceed up the High Street. Just past The Chequers take the left fork down the cobbled street.

The property can be found at the end of this street.

### Sevenoaks

15 Bank Street, Sevenoaks, Kent, TN13 1UW

**01732 459900**

sevenoaks@struttandparker.com  
 struttandparker.com



Over 50 offices across England and Scotland, including Prime Central London



For the finer things in property.



**IMPORTANT NOTICE:** Strutt & Parker gives notice that: 1. These particulars do not constitute an offer or contract or part thereof. 2. All descriptions, photographs and plans are for guidance only and should not be relied upon as statements or representations of fact. All measurements are approximate and not necessarily to scale. Any prospective purchaser must satisfy themselves of the correctness of the information within the particulars by inspection or otherwise. 3. Strutt & Parker does not have any authority to give any representations or warranties whatsoever in relation to this property (including but not limited to planning/building regulations), nor can it enter into any contract on behalf of the Vendor. 4. Strutt & Parker does not accept responsibility for any expenses incurred by prospective purchasers in inspecting properties which have been sold, let or withdrawn. 5. We are able to refer you to SPF Private Clients Limited ("SPF") for mortgage broking services, and to Alexander James Interiors ("AJI"), an interior design service. Should you decide to use the services of SPF, we will receive a referral fee from them of 25% of the aggregate of the fee paid to them by you for the arrangement of a mortgage and any fee received by them from the product provider. Should you decide to use the services of AJI, we will receive a referral fee of 10% of the net income received by AJI for the services they provide to you. 6. If there is anything of particular importance to you, please contact this office and Strutt & Parker will try to have the information checked for you. Photographs taken August 2024. Particulars prepared August 2024. Strutt & Parker is a trading style of BNP Paribas Real Estate Advisory & Property Management UK Limited