



9 Hankins Court, Jacklyns Lane, Alresford, Hampshire

For the finer things in property.

**STRUTT
& PARKER**

BNP PARIBAS GROUP 

9 Hankins Court Jacklyns Lane, Alresford, Hampshire SO24 9FD

A modern townhouse located in the heart of this popular Georgian market town

West Street 0.1 miles, Winchester 7.4 miles, Alton 11.5 miles, Micheldever Station 10.3 miles

Sitting room | Dining room/bedroom 2
Kitchen/family room | Bedroom with en suite shower room | Courtyard garden | EPC Rating C

The property

9 Hankins Court is a well presented modern town house, with flexible accommodation laid out over three floors and is an ideal lock up and leave property with low maintenance. On entering the house there is a spacious hallway with a bathroom and useful utility area. On the lower ground floor a former garage has been converted into additional living space, which is currently used as a sitting room and a dining room. The garage doors are still in place so it could easily be changed back into a garage, if required.

Upstairs is a well appointed kitchen with integrated appliances and living area with a vaulted ceiling and oak flooring. The principal bedroom has an en suite shower room and views out over the courtyard. The house has plantation blinds throughout and plenty of storage.

Outside

To the front is a sloped brick paved area leading up to the front door. There is space for some flower pots and a small seating area. Please note, there is no allocated parking at this property, but parking is on street.

Location

The charming Georgian market town of Alresford has an exceptional range of day to day shops and facilities including supermarkets, butcher, chemist, florist a gym, churches, hairdressers, pubs, coffee shops and restaurants as well as a doctors surgery and dentists. In addition, there are a number of independent boutiques.

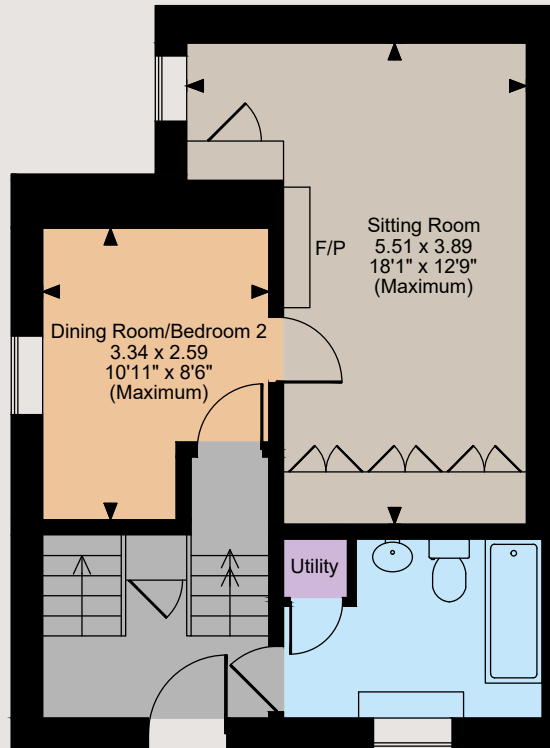
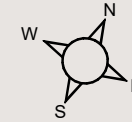
More comprehensive facilities are to be found in the nearby city of Winchester which along with Micheldever Station have regular trains to Waterloo taking from 58 minutes and 57 minutes respectively. There is also a train station at Alton with trains to Waterloo taking from 1 hour and six minutes. Road communications are excellent with the A31 a few miles away that links up with the M3, A34, A303.

There are plenty of sporting and leisure options in the area, with several golf courses nearby, the nearest ones are found in Alresford, Avington and Winchester. Chalk stream fishing is available on the Rivers Itchen and Test and the area is criss-crossed by footpaths and bridleways including the Wayfarers Walk.

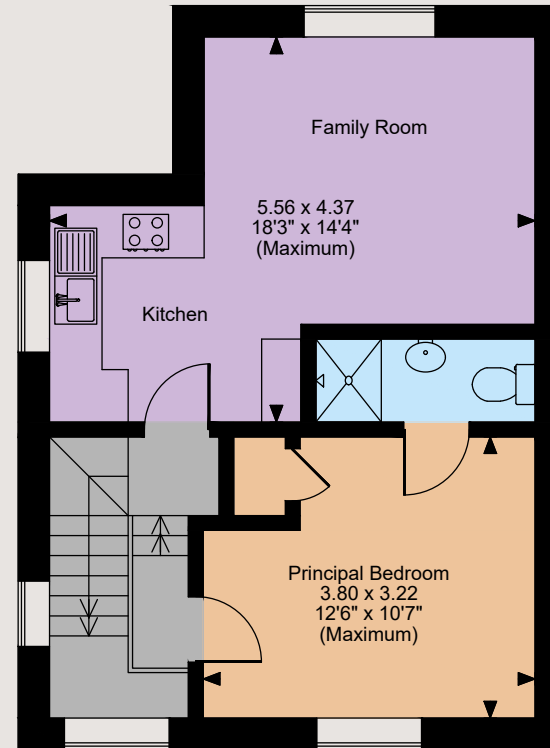




Floorplans
House internal area 815 sq ft (76 sq m)
For identification purposes only.



Ground Floor



First Floor

The position & size of doors, windows, appliances and other features are approximate only.
© ehouse. Unauthorised reproduction prohibited. Drawing ref. dig/8606255/JLW

Directions

what3words\\prop.finer.hangs

General

Local Authority: Winchester City Council
Services: Mains water, electricity and drainage.
Gas fired central heating.
Council Tax: Band E
Tenure: Freehold
Guide Price: £395,000

Winchester

6 Jewry Street, Winchester SO23 8RZ

01962 869999

winchester@struttandparker.com
struttandparker.com



Over 50 offices across England and Scotland,
including Prime Central London



For the finer things in property.

