



Kelfield Gardens, North Kensington, W10

For the finer things in property.

**STRUTT  
& PARKER**

BNP PARIBAS GROUP 

## Kelfield Gardens, North Kensington, W10

On the market for the first time in over forty years, this handsome, detached, six bedroom family house has a charming rear garden and outstanding, lateral entertaining space.

It occupies an enviable, wide position with an open aspect to both front and rear of the property.

The house offers generous proportions and flexible living accommodation, further enhanced with the impressive basement extension which has a separate, private entrance and very good ceiling heights.

Kelfield Gardens is an attractive address in the sought after St. Quintin Conservation Area. Situated close to the amenities of St. Helen's Gardens, Portobello Road and Golborne Road, it is near to Latimer Road underground station (Circle, Hammersmith and City lines) and the nearby A40 for routes in an out of London.

Entrance hall | Drawing room | Conservatory  
Kitchen/dining room | Further reception room/  
kitchen | Six bedrooms | Five bath/shower  
rooms | Guest WC | Garden  
EPC Rating D



### Terms

**Tenure:** Freehold

**Council Tax:** Band G

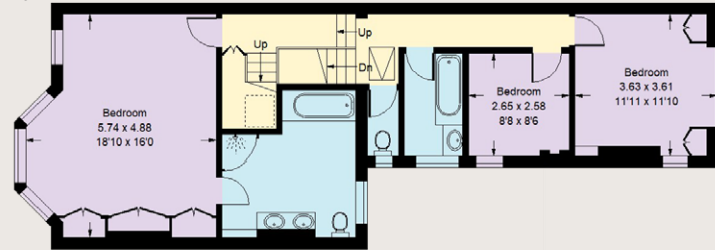
**Local Authority:** The Royal Borough of  
Kensington and Chelsea

**Asking Price:** £3,650,000

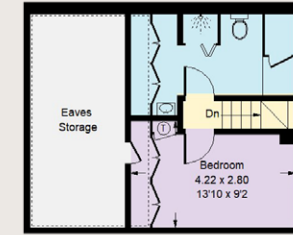




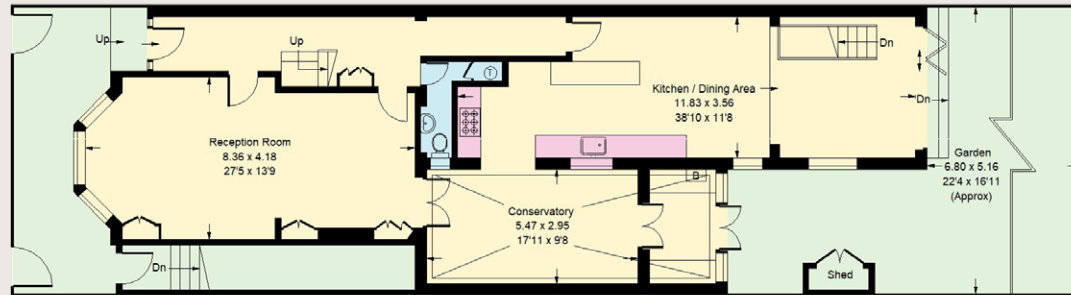
Approximate gross internal area including eaves storage 3,722 sq ft (345.8 sq m)  
For identification purposes only.



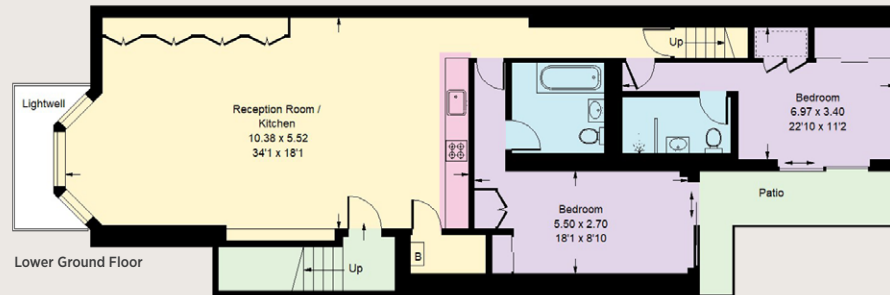
First Floor



Second Floor



Ground Floor



Lower Ground Floor

## Notting Hill

303 Westbourne Grove, London, W11 2QA

020 7221 1111

nottinghill@struttandparker.com

struttandparker.com

### IMPORTANT NOTICE

Strutt & Parker gives notice that: 1. These particulars do not constitute an offer or contract or part thereof. 2. All descriptions, photographs and plans are for guidance only and should not be relied upon as statements or representations of fact. All measurements are approximate and not necessarily to scale. Any prospective purchaser must satisfy themselves of the correctness of the information within the particulars by inspection or otherwise. 3. Strutt & Parker does not have any authority to give any representations or warranties whatsoever in relation to this property (including but not limited to planning/building regulations), nor can it enter into any contract on behalf of the Vendor. 4. Strutt & Parker does not accept responsibility for any expenses incurred by prospective purchasers in inspecting properties which have been sold, let or withdrawn. 5. We are able to refer you to SPF Private Clients Limited ("SPF") for mortgage broking services, and to Alexander James Interiors ("AJI"), an interior design service. Should you decide to use the services of SPF, we will receive a referral fee from them of 25% of the aggregate of the fee paid to them by you for the arrangement of a mortgage and any fee received by them from the product provider. Should you decide to use the services of AJI, we will receive a referral fee of 10% of the net income received by AJI for the services they provide to you. 6. If there is anything of particular importance to you, please contact this office and Strutt & Parker will try to have the information checked for you. Photographs taken April 2024. Particulars prepared April 2024 Strutt & Parker is a trading style of BNP Paribas Real Estate Advisory & Property Management UK Limited.



Over 50 offices across England and Scotland,  
including Prime Central London

For the finer things in property.

