



Lennox Gardens, Knightsbridge SW1

**STRUTT & PARKER**  
BNP PARIBAS GROUP 



# Lennox Gardens Knightsbridge SW1X

A stunning lateral apartment located in one of London's most prestigious addresses

Reception room | Dining room | Seperate Kitchen | Principal bedroom with en suite bathroom | 2nd bedoom | Shower room | French windows | Balcony | Lift | Air conditioning  
EPC Rating C

A tastefully renovated lateral apartment situated on the 2nd floor (with lift) of this superbly located red brick building in Knightsbridge. Extending to over 1,000 sq.ft., the property has floor to ceiling French windows leading to an ornamental balcony allowing for a huge amount of natural light and air. There is a good sized separate kitchen and both of the double bedrooms are equipped with air conditioning.



## Terms

**Tenure:** Leasehold circa 170 years remaining

**Service Charge:** £6,584 pa

**Reserve Fund:** £1,356 pa

**Council Tax:** Band G

**Local Authority:** The Royal Borough of Kensington and Chelsea

**Price:** £2,500,000









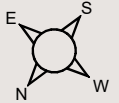
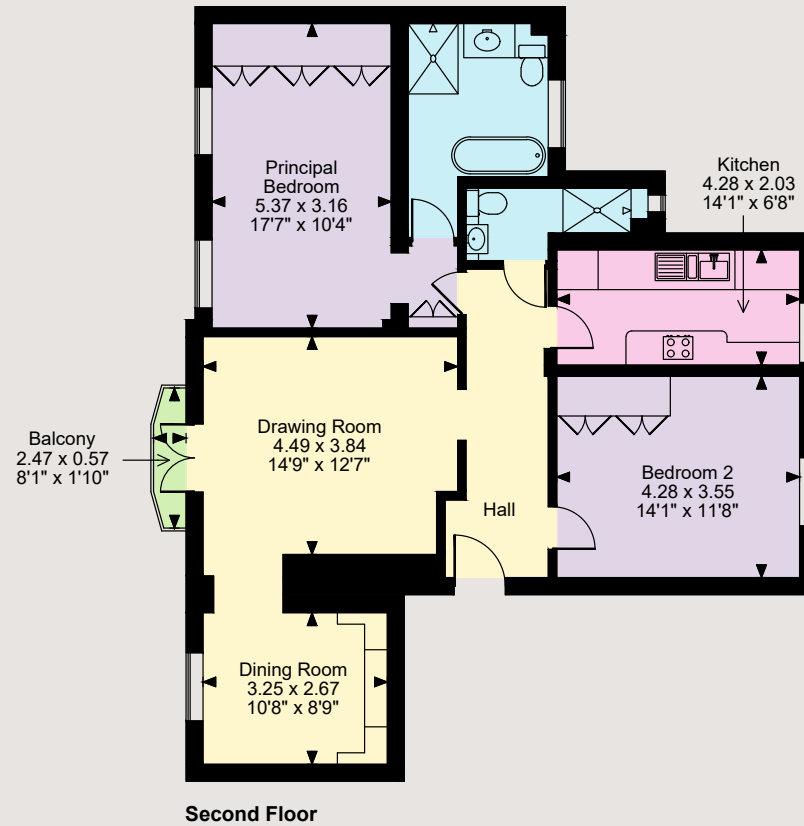


## Location

Lennox Gardens is one of Knightbridge's most sought after addresses, ideally situated for the excellent selection of shops, bars and restaurants that the area has to offer including the world famous Harrods and Harvey Nichols department stores.

Both Sloane Square underground station (District and Circle lines) and South Kensington station (Piccadilly, District and Circle Lines) are 0.6 miles away

Floorplans  
Flat internal area 1,046 sq ft (97.2 sq m)  
For identification purposes only.



The position & size of doors, windows, appliances and other features are approximate only.  
© ehouse. Unauthorised reproduction prohibited. Drawing ref. dig/8568593/KKM

## Chelsea Office

43 Cadogan Street, London, SW3 2PR

020 7225 3866

chelsea@struttandparker.com

**IMPORTANT NOTICE:** Strutt & Parker gives notice that: 1. These particulars do not constitute an offer or contract or part thereof. 2. All descriptions, photographs and plans are for guidance only and should not be relied upon as statements or representations of fact. All measurements are approximate and not necessarily to scale. Any prospective purchaser must satisfy themselves of the correctness of the information within the particulars by inspection or otherwise. 3. Strutt & Parker does not have any authority to give any representations or warranties whatsoever in relation to this property (including but not limited to planning/building regulations), nor can it enter into any contract on behalf of the Vendor. 4. Strutt & Parker does not accept responsibility for any expenses incurred by prospective purchasers in inspecting properties which have been sold, let or withdrawn. 5. We are able to refer you to SPF Private Clients Limited ("SPF") for mortgage broking services, and to Alexander James Interiors ("AJI"), an interior design service. Should you decide to use the services of SPF, we will receive a referral fee from them of 25% of the aggregate of the fee paid to them by you for the arrangement of a mortgage and any fee received by them from the product provider. Should you decide to use the services of AJI, we will receive a referral fee of 10% of the net income received by AJI for the services they provide to you. 6. If there is anything of particular importance to you, please contact this office and Strutt & Parker will try to have the information checked for you. Photographs taken September 2023. Particulars prepared September 2023. Strutt & Parker is a trading style of BNP Paribas Real Estate Advisory & Property Management UK Limited.