



Leonard Court, Kensington, W8

For the finer things in property.



Leonard Court, Kensington, W8

A beautifully presented two-bedroom apartment ideally located on the first floor of this highly sought after block in Kensington. The flat has access to Edwardes Square, arguably the best communal garden in Kensington.

Set on the first floor in a popular apartment block in Kensington and facing onto Kensington High Street, this apartment offers good light throughout and has been recently refurbished. There is a spacious living room and separate kitchen, positioned to the rear are two quiet bedrooms and one bathroom. There is a lift within the building and the block has the benefit of a porter.

Leonard Court is situated at the north-eastern corner of Edwardes Square which is considered to be one of Kensington's finest squares with beautifully maintained gardens, a grass tennis court, trees and children's play area.

Entrance hall | Reception | Kitchen | Principal bedroom | Double bedroom | Bathroom | Lift Porter | Communal garden | EPC Rating F

Terms

Tenure: Leasehold. 119 year lease, expiring 24th March 2144

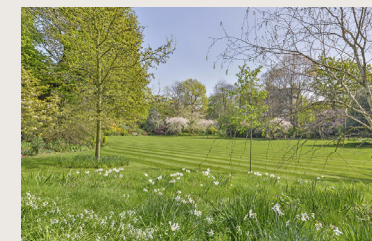
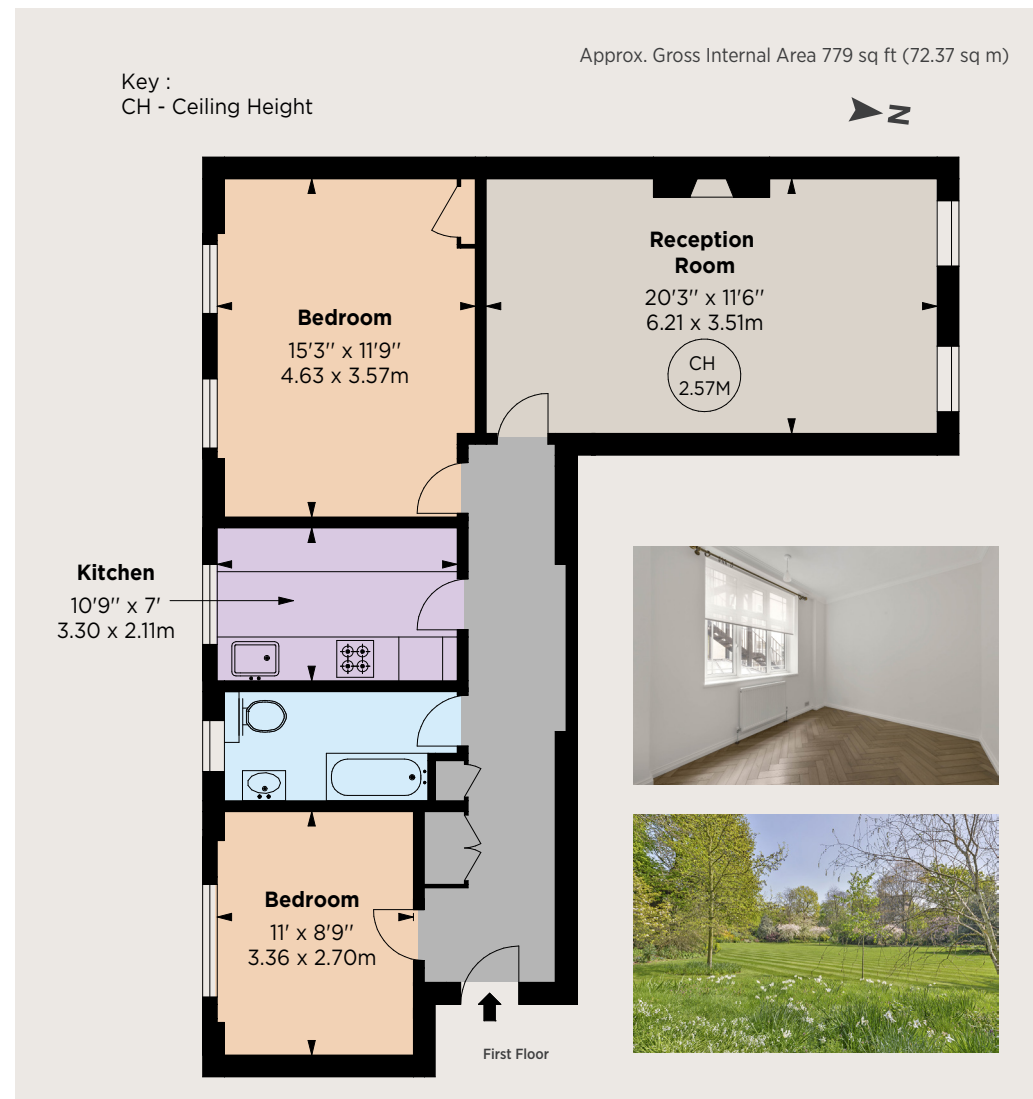
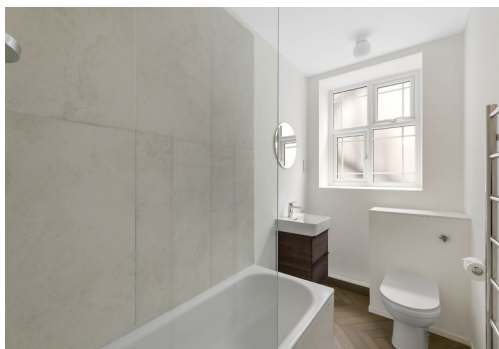
Service Charge: £1,800 per quarter, including heating and hot water

Ground Rent: £100 per annum

Council Tax: Band F

Local Authority: The Royal Borough of Kensington and Chelsea

Asking Price: £795,000



Kensington

103 Kensington Church Street, London W8 7LN

020 7938 3666

kensington@struttandparker.com

IMPORTANT NOTICE

Strutt & Parker gives notice that: 1. These particulars do not constitute an offer or contract or part thereof. 2. All descriptions, photographs and plans are for guidance only and should not be relied upon as statements or representations of fact. All measurements are approximate and not necessarily to scale. Any prospective purchaser must satisfy themselves of the correctness of the information within the particulars by inspection or otherwise. 3. Strutt & Parker does not have any authority to give any representations or warranties whatsoever in relation to this property (including but not limited to planning/building regulations), nor can it enter into any contract on behalf of the Vendor. 4. Strutt & Parker does not accept responsibility for any expenses incurred by prospective purchasers in inspecting properties which have been sold, let or withdrawn. 5. We are able to refer you to SPF Private Clients Limited ("SPF") for mortgage broking services, and to Alexander James Interiors ("AJI"), an interior design service. Should you decide to use the services of SPF, we will receive a referral fee from them of 25% of the aggregate of the fee paid to them by you for the arrangement of a mortgage and any fee received by them from the product provider. Should you decide to use the services of AJI, we will receive a referral fee of 10% of the net income received by AJI for the services they provide to you. 6. If there is anything of particular importance to you, please contact this office and Strutt & Parker will try to have the information checked for you. Photographs taken September 2024. Particulars prepared September 2024. Strutt & Parker is a trading style of BNP Paribas Real Estate Advisory & Property Management UK Limited.



Over 50 offices across England and Scotland,
including Prime Central London

For the finer things in property.

