



Hopkins Yard,
Market Street,
Charlbury,
Chipping Norton,
OX7 3PJ

Open plan reception | Four bedrooms
Three bathrooms | Landscaped garden

The Property

Hopkins Yard is a stunning home tucked away at the bottom of Market Street in Charlbury, set behind private gates. This architecturally designed home boasts an abundance of space and light throughout, with four bedrooms (two with en suite bathrooms).

Upon entering the grand front doors, you are met with high ceilings and a circular staircase. Downstairs has a spectacular open plan kitchen and living area with a wonderful fire in the middle of the room. The principal bedroom is also on the ground floor, with views out onto the landscaped gardens.

Upstairs are two further bedrooms with an en-suite bathroom, shared by both rooms.

Outside

The landscaped, rear, garden is set in a beautiful Cotswold stone wall, with three separate alfresco dining areas and pond. A gardener is included in the rent to maintain the garden throughout the year. There is also a bike shed, to be used for storage, along with an electric car charging point.

Location

Charlbury is an historic Cotswold market town located in an Area of Outstanding Natural Beauty. Situated in the Evenlode Valley well away from busy main roads, the Town looks out across a valley to Cornbury Park. Charlbury train station offers excellent rail links with Oxford and with London.





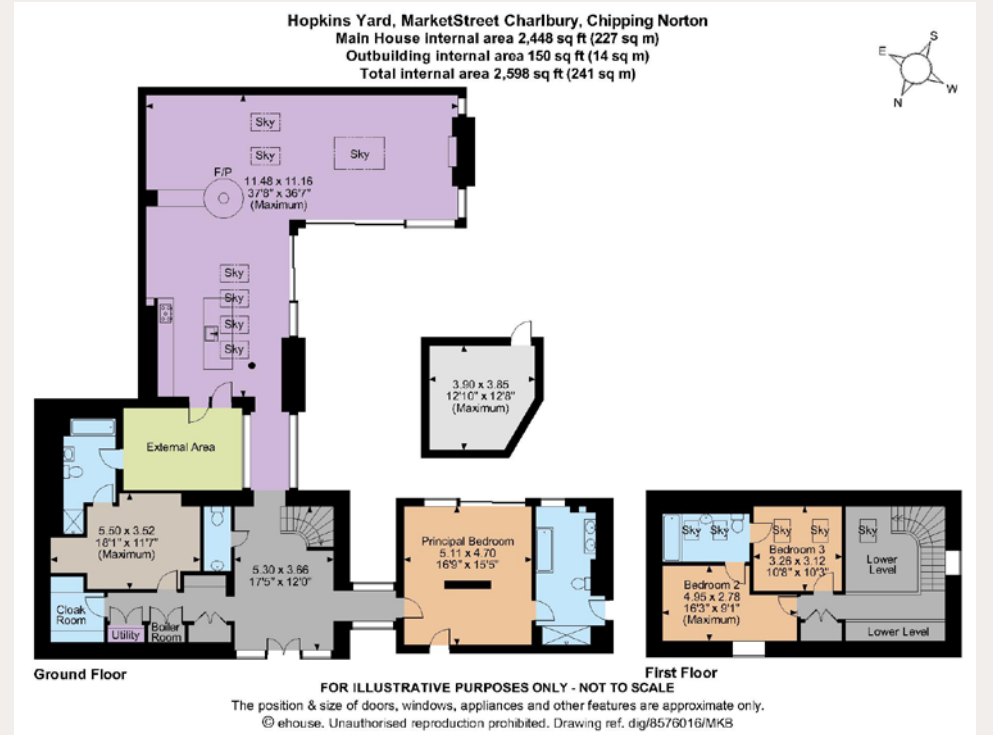
Terms:

£9,000 pcm plus charges*

Council Tax Band G
West Oxfordshire District Council
EPC Rating C

Mains water & drainage
Gas central heating

The following Tenant charges may apply prior to tenancy commencement: Tenancy Agreement £354 (incl VAT), Credit Reference per application £70 (incl VAT). All advertised prices are exclusive of utility and other associated services www.struttandparker.com/tenantcharges



Oxford Lettings

201-203 Banbury Road, Oxford, OX2 7AR

01865 366680

oxford.lettings@struttandparker.com

IMPORTANT NOTICE

IMPORTANT NOTICE: Strutt & Parker gives notice that: 1. These particulars do not constitute an offer or contract or part thereof. 2. All descriptions, photographs and plans are for guidance only and should not be relied upon as statements or representations of fact. All measurements are approximate and not necessarily to scale. Any prospective Tenant must satisfy themselves of the correctness of the information within the particulars by inspection or otherwise or accept the Property as is on arrival. 3. Strutt & Parker does not have any authority to give any representations or warranties whatsoever in relation to this property (including but not limited to planning/building regulations), nor can it enter into any contract on behalf of the Landlord. 4. Strutt & Parker does not accept responsibility for any expenses incurred by prospective Tenants in inspecting properties which have been sold, let or withdrawn. 5. If there is anything of particular importance to you, please contact this office and Strutt & Parker will try to have the information checked for you. Photographs taken December 2023.. Particulars prepared December 2023. Strutt & Parker is a trading style of BNP Paribas Real Estate Advisory & Property Management UK Limited.

STRUTT & PARKER

[/struttandparker](https://www.facebook.com/struttandparker)

[@struttandparker](https://www.instagram.com/struttandparker)

struttandparker.com

Over 50 Offices across England and Scotland, including prime Central London