



MONTROSE PLACE

BELGRAVIA SW1



An exceptional three bedroom lateral apartment on the second floor (with lift), benefitting from a 36 ft south-facing reception room, private terrace, concierge and separate staff accommodation

10 Montrose Place is one of the most prestigious and discreet developments in Belgravia with an impressive resident's reception area overlooking a private landscaped internal courtyard and has access to communal gardens.

This exceptional apartment is arranged laterally over the second floor with lift access, air conditioning and Lutron lighting.

The reception room and kitchen / breakfast room both lead onto the terrace and all three double bedrooms are quietly positioned to the rear with views over Halkin Street Garden.

The property also has a rare staff flat, one of only four in this building, wine cellar/storage room and two secure underground car parking spaces, all securely accessed via the same passenger lift.

TERMS

Tenure: Leasehold, 110 years from 25/12/2004 therefore approximately 111 years remaining

Service Charge: £89,081 per annum

Local Authority: City of Westminster

Council Tax: Band H

EPC Certificate: Rating D

Price: £11,795,000





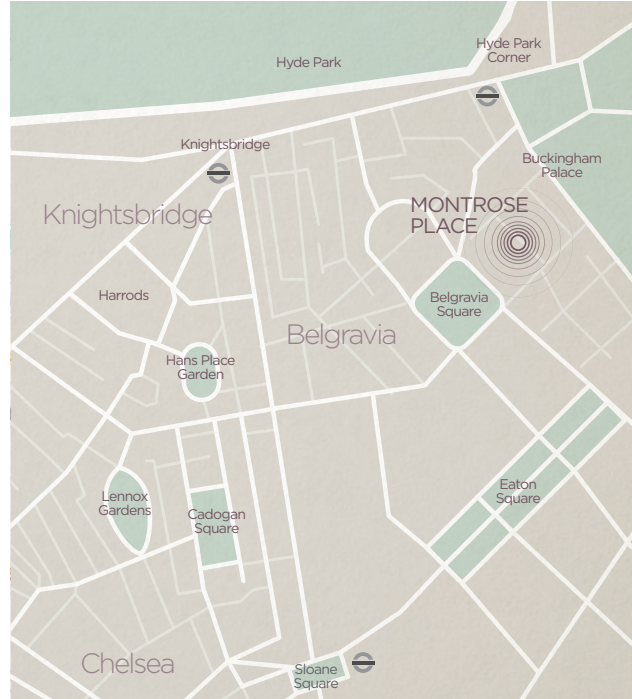


ACCOMMODATION

- Entrance hall
- 36'11 x 22'8 Drawing room with dining area
- Kitchen / breakfast room
- 19'6 x 19'9 Principal bedroom suite with separate dressing room and bathroom
- Bedroom 2 and en suite bathroom
- Bedroom 3
- Bathroom 3
- Cloakroom
- Utility room
- Southwest-facing terrace
- Lift
- Wine cellar
- Separate staff flat/gym comprising studio room with shower en suite
- Two underground parking spaces
- Air conditioning
- Access to communal gardens
- 24-Hour concierge

LOCATION

Montrose Place is situated just off Belgrave Square which is not far from Hyde Park Corner. The internationally renowned shops in Knightsbridge and the local amenities of Motcomb Street are very close by.





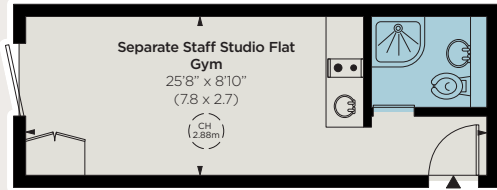




APPROXIMATE GROSS INTERNAL AREA

3,084 sq ft / 286 sq m including wine cellar and staff room

2,714 sq ft / 252 sq m excluding wine cellar and staff room



This plan was supplied to The Brochure by Strutt & Parker

Lower Ground Floor



Second Floor

Chelsea

43 Cadogan Street, London SW3 2PR

+44 (0)20 7225 3866

chelsea@struttandparker.com
struttandparker.com

IMPORTANT NOTICE: Strutt & Parker gives notice that: 1. These particulars do not constitute an offer or contract or part thereof. 2. All descriptions, photographs and plans are for guidance only and should not be relied upon as statements or representations of fact. All measurements are approximate and not necessarily to scale. Any prospective purchaser must satisfy themselves of the correctness of the information within the particulars by inspection or otherwise. 3. Strutt & Parker does not have any authority to give any representations or warranties whatsoever in relation to this property (including but not limited to planning/building regulations), nor can it enter into any contract on behalf of the Vendor. 4. Strutt & Parker does not accept responsibility for any expenses incurred by prospective purchasers in inspecting properties which have been sold, let or withdrawn. 5. We are able to refer you to SPF Private Clients Limited ("SPF") for mortgage broking services, and to Alexander James Interiors ("AJI"), an interior design service. Should you decide to use the services of SPF, we will receive a referral fee from them of 25% of the aggregate of the fee paid to them by you for the arrangement of a mortgage and any fee received by them from the product provider. Should you decide to use the services of AJI, we will receive a referral fee of 10% of the net income received by AJI for the services they provide to you. 6. If there is anything of particular importance to you, please contact this office and Strutt & Parker will try to have the information checked for you. **Photographs taken September 2017 and May 2021. Particulars prepared June 2021.** Strutt & Parker is a trading style of BNP Paribas Real Estate Advisory & Property Management UK Limited. 14/01/25S&P-210517E-23MS