



BOLTONS COURT

Old Brompton Road

LONDON SW5



A simply breathtaking split-level apartment with an unparalleled garden set entirely to the rear of this beautiful period building on Old Brompton Road

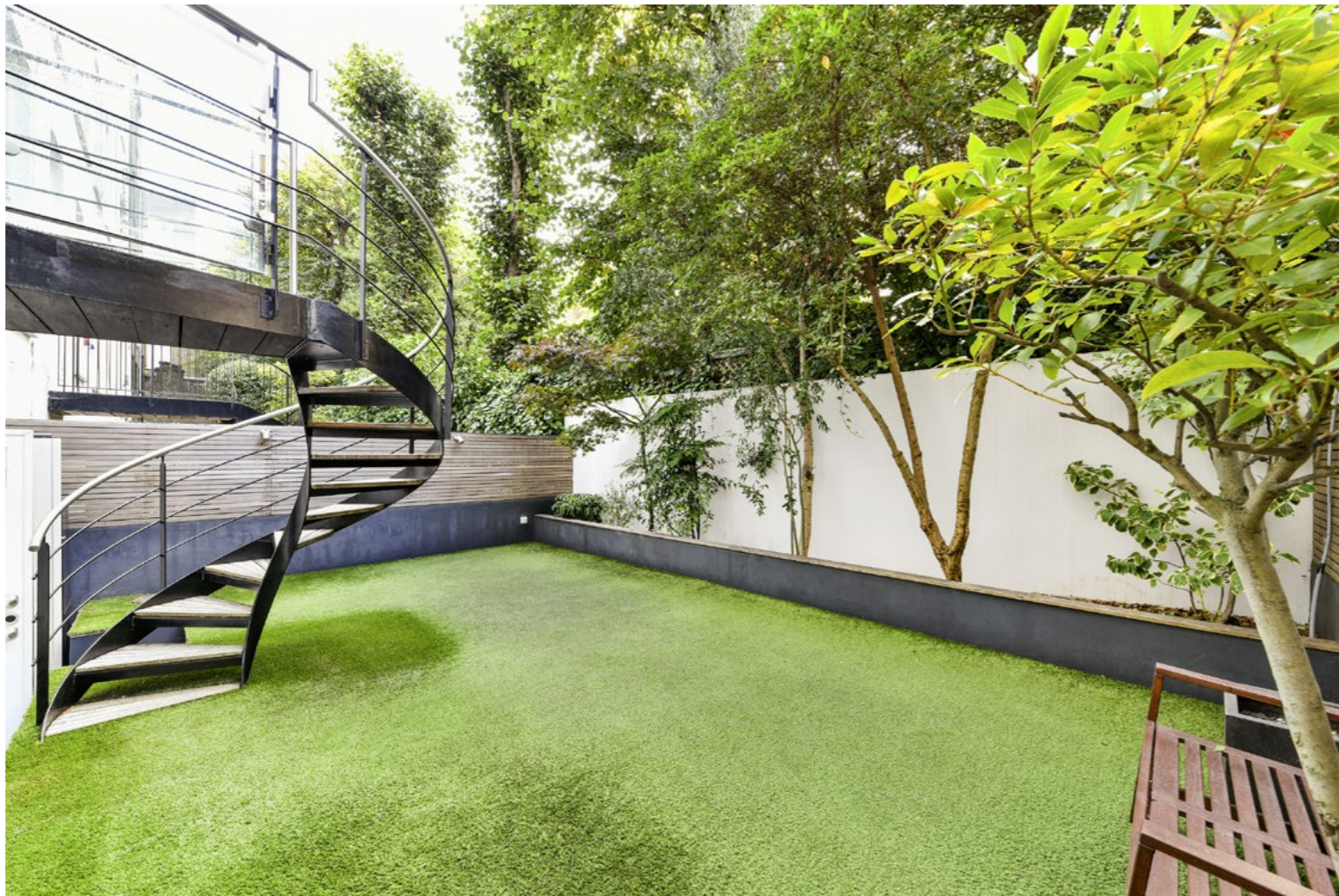


The property has been recently refurbished and is presented to the highest standard. It enjoys an exceptionally spacious reception room with three large windows overlooking the perfectly manicured garden. The property is offered in turnkey condition throughout and boasts an abundance of natural light on both the upper ground and lower ground floors.

The large drawing room leads to a private garden through recently restored French doors, a beautiful dining room, an open-plan kitchen and study with a separate cloakroom are also located on the raised ground floor.

The apartment further extends to the lower ground floor where a substantial principal suite with direct access to the garden is located. Two further bedrooms, two shower rooms, an additional utility and good hallway storage space are also set on the same floor.





Location

Located to the end of The Little Boltons, Old Brompton Road is well serviced by the transport links and local amenities to both Earls Court and Gloucester Road Underground stations.

Accommodation

- Open-plan reception room with kitchen and dining area
- Principal suite with bathroom
- 2 Further bedrooms
- 2 Studies/offices
- 2 Shower rooms
- Garden
- Terrace
- Cloakroom
- Residents' parking

Terms

Tenure
Share of Freehold

Service charge
£5,668 per annum

Ground Rent
£23 per annum

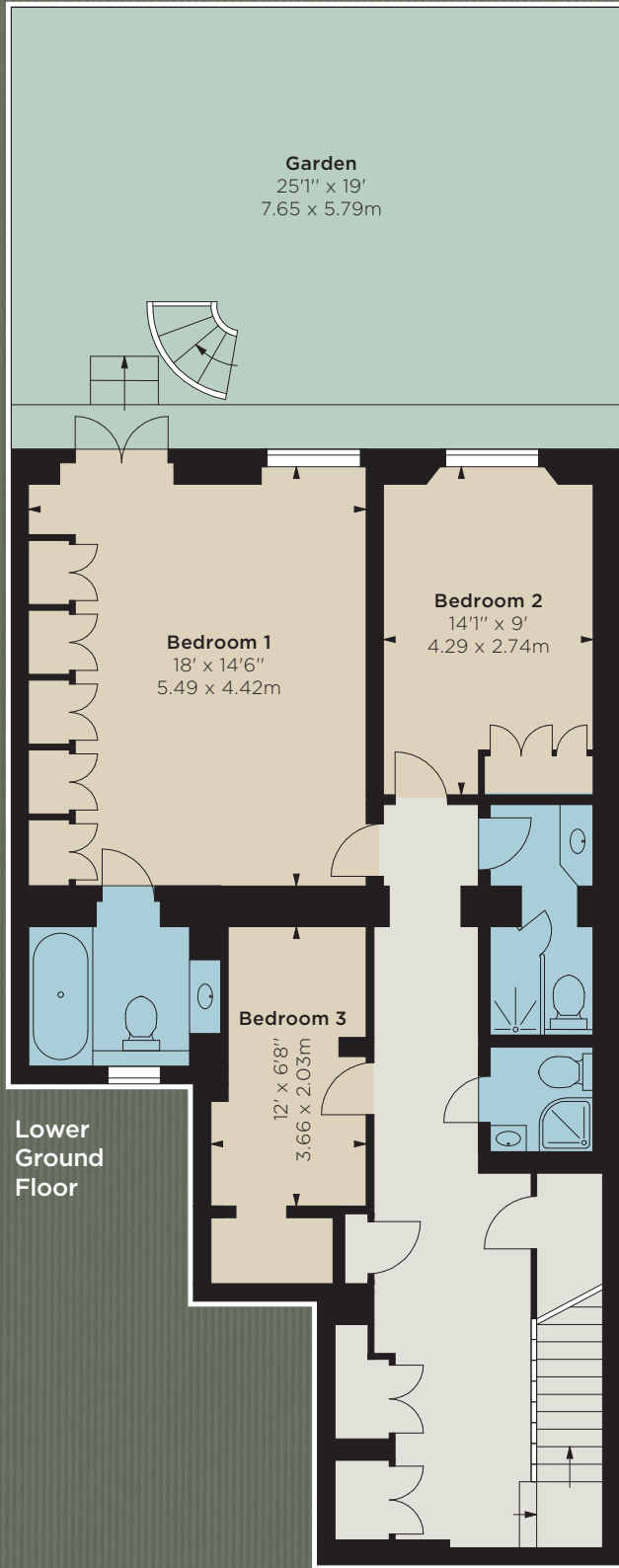
Local Authority
The Royal Borough of
Kensington and Chelsea

Council Tax
Band D

EPC Rating
Rating D

Guide Price
£2,950,000

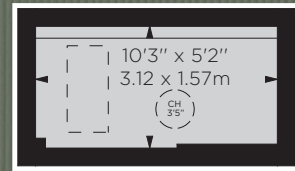




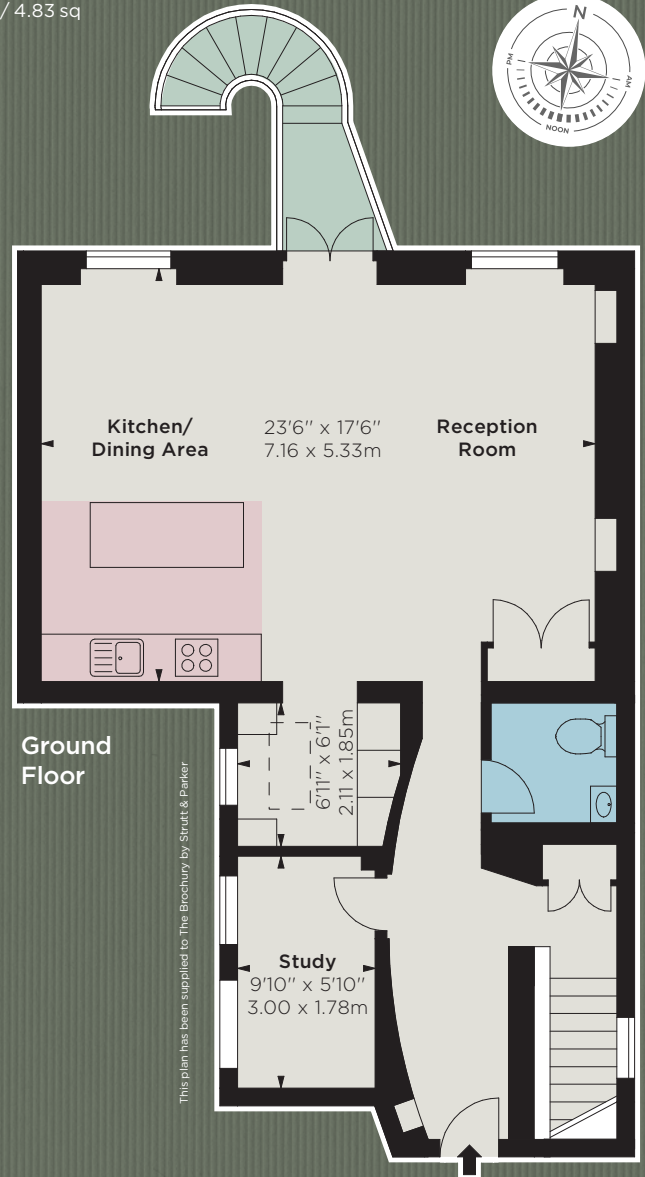
Approximate Gross Internal Area

1,651 sq ft /
153.84 sq m

including loft area
and all areas under
1.5m head-height
52 sq ft / 4.83 sq



Loft



IMPORTANT NOTICE: Strutt & Parker gives notice that: 1. These particulars do not constitute an offer or contract or part thereof. 2. All descriptions, photographs and plans are for guidance only and should not be relied upon as statements or representations of fact. All measurements are approximate and not necessarily to scale. Any prospective purchaser must satisfy themselves of the correctness of the information within the particulars by inspection or otherwise. 3. Strutt & Parker does not have any authority to give any representations or warranties whatsoever in relation to this property (including but not limited to planning/building regulations), nor can it enter into any contract on behalf of the Vendor. 4. Strutt & Parker does not accept responsibility for any expenses incurred by prospective purchasers in inspecting properties which have been sold, let or withdrawn. 5. We are able to refer you to SPF Private Clients Limited ("SPF") for mortgage broking services, and to Alexander James Interiors ("AJI"), an interior design service. Should you decide to use the services of SPF, we will receive a referral fee from them of 25% of the aggregate of the fee paid to them by you for the arrangement of a mortgage and any fee received by them from the product provider. Should you decide to use the services of AJI, we will receive a referral fee of 10% of the net income received by AJI for the services they provide to you. 6. If there is anything of particular importance to you, please contact this office and Strutt & Parker will try to have the information checked for you. Photographs taken August 2024 and September 2024. Particulars prepared September 2024. Strutt & Parker is a trading style of BNP Paribas Real Estate Advisory & Property Management UK Limited. 08/10/24S&P-240927-06-GG

South Kensington

90 Old Brompton Road, London SW7 3LQ

+44 (0)20 7581 7000

southken@struttandparker.com
struttandparker.com

[f/struttandparker](https://www.facebook.com/struttandparker)

Over 50 offices across England and Scotland,
including Prime Central London

For the finer things in property.

**STRUTT
& PARKER**

BNP PARIBAS GROUP