



The Barn

Old Mead Road, Henham, Bishop's Stortford

The Barn

**STRUTT
& PARKER**

BNP PARIBAS GROUP

Charming thatched barn situated on the outskirts of the village.

The Barn, believed to have been built in the early 17th century and originally forming part of the Old Mead Estate offers spacious and versatile accommodation on the edge of this popular village.



2 RECEPTION ROOMS



4 BEDROOMS



2 BATHROOMS



GARAGE



GARDEN



FREEHOLD



EDGE OF VILLAGE



2,057 SQ FT



**GUIDE PRICE
£1,150,000**



The property

Believed to have been built in the early 17th century and originally forming part of the Old Mead Estate, The Barn was converted for residential usage in the 1930s and now offers spacious and versatile accommodation on the edge of this popular village. Having been extended in the 1970s the accommodation comprises a spacious sitting room with an open fire, dining room with French doors to open aspect, kitchen/breakfast room with access to a north-facing walk in pantry as well as a ground floor study/family room. Stairs from the reception area leads to a galleried landing and provides access to the master bedroom, three further bedrooms, family bathroom and a separate shower room. Unusually for a property of this nature, it is not listed and has full ceiling and door heights.

Outside

The property is well secluded within its grounds from the lane by mature trees and hedge rows, and is approached via double gates and a shingle drive. The south facing garden has boundaries defined by post and rail fencing and mature hedging and is laid to a formal lawn. Adjacent but detached from the house is a single garage with ample parking. The house sits on a plot of approximately 0.5 acres.



Location

Henham is a charming village situated nearby to the larger village of Elsenham which has a small shopping parade, ideal for everyday items. The town of Stansted is located 2.8 miles to the southwest; while the market town of Bishops Stortford is 5.8 miles away. From Bishops Stortford you are able to get a train to London in around 40 minutes. Both these towns have a comprehensive range of shopping, transport and entertainment facilities. Within the village of Elsenham there is also a mainline station which is situated closer to the property (under 10 minute walk from the property) where you can get a train to London in under an hour..

There are a number of excellent schools in the area including Bishops Stortford College, Felsted School, Herts & Essex Grammar School and Saffron Walden High School. Access to the national road network can be gained nearby at Junction 8 of the M11. Henham Primary School is within walking distance via the Lane.



Distances

- Cambridge 22 miles
- Bishops Stortford 6.1 miles
- Stansted Airport 5.3 miles
- Saffron Walden 8.2 miles

Nearby Stations

- Elsenham Train Station
- Stansted Mountfitchet
- Newport

Key Locations

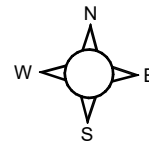
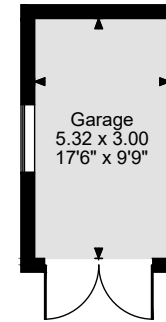
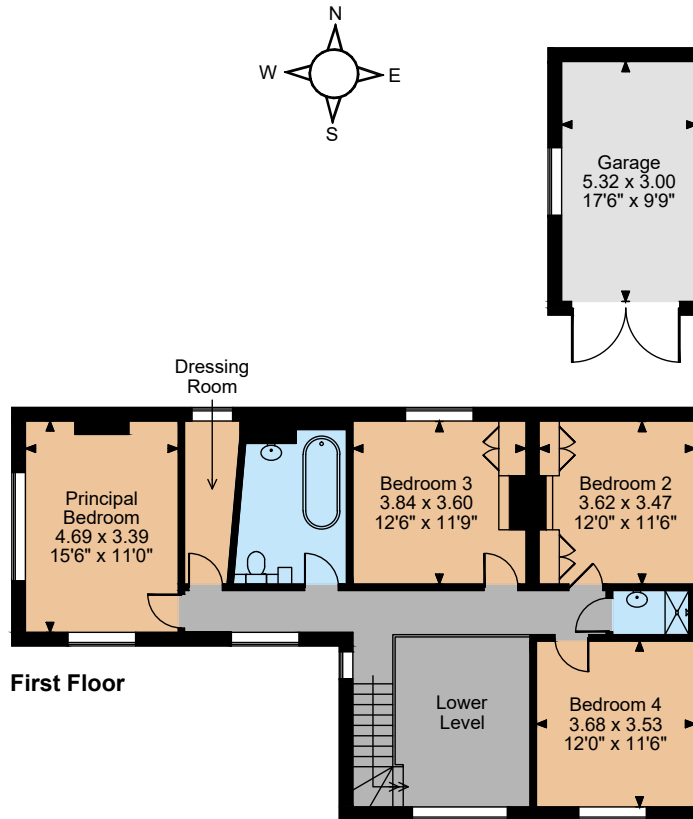
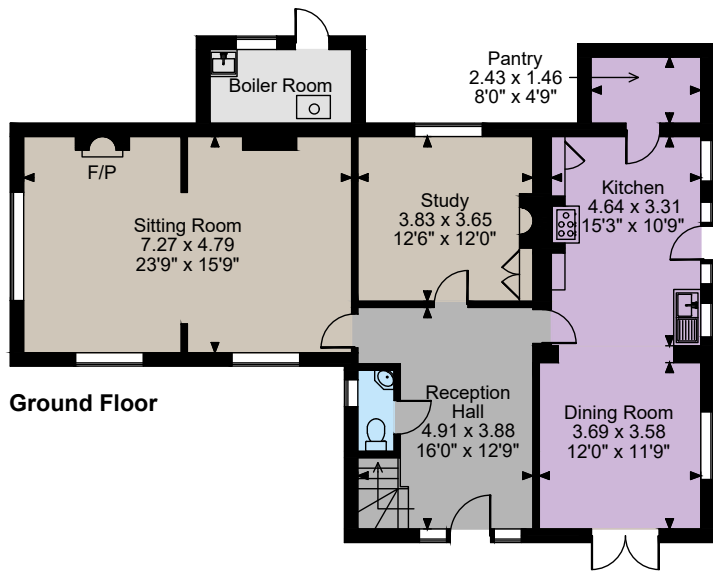
- Daisy May Farm
- Mountfitchet Castle
- Audley End
- Saffron Walden RFU

Nearby Schools

- Henham and Ugley Primary School
- Old School Community Association
- Avanti Grange Secondary School
- Bishops Stortford College

- Hertfordshire and Essex High School





Floorplans

House internal area 2,057 sq ft (191 sq m)
For identification purposes only.

Directions

CM22 6J

///what3words

General

Local Authority: Uttlesford

Services: Mains drainage, water and electricity. Oil central heating.

Mobile and Broadband checker: Information can be found here <https://checker.ofcom.org.uk/en-gb/>

Council Tax: Band G

The position & size of doors, windows, appliances and other features are approximate only.

© ehouse. Unauthorised reproduction prohibited. Drawing ref. dig/8639057/SS

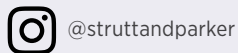
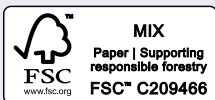
IMPORTANT NOTICE: Strutt & Parker gives notice that: 1. These particulars do not constitute an offer or contract or part thereof. 2. All descriptions, photographs and plans are for guidance only and should not be relied upon as statements or representations of fact. All measurements are approximate and not necessarily to scale. Any prospective purchaser must satisfy themselves of the correctness of the information within the particulars by inspection or otherwise. 3. Strutt & Parker does not have any authority to give any representations or warranties whatsoever in relation to this property (including but not limited to planning/building regulations), nor can it enter into any contract on behalf of the Vendor. 4. Strutt & Parker does not accept responsibility for any expenses incurred by prospective purchasers in inspecting properties which have been sold, let or withdrawn. 5. We are able to refer you to SPF Private Clients Limited ("SPF") for mortgage broking services, and to Alexander James Interiors ("AJI"), an interior design service. Should you decide to use the services of SPF, we will receive a referral fee from them of 25% of the aggregate of the fee paid to them by you for the arrangement of a mortgage and any fee received by them from the product provider. Should you decide to use the services of AJI, we will receive a referral fee of 10% of the net income received by AJI for the services they provide to you. 6. If there is anything of particular importance to you, please contact this office and Strutt & Parker will try to have the information checked for you. Photographs taken March 2025. Particulars prepared March 2025. Strutt & Parker is a trading style of BNP Paribas Real Estate Advisory & Property Management UK Limited

Cambridge

1 Cambridge Square, Cambridge, CB4 0AE

01223 459 500

cambridge@struttandparker.com
struttandparker.com



Over 50 offices across England and Scotland,
including Prime Central London

For the finer things in property.

