



Onslow Gardens
SOUTH KENSINGTON SW7

A well-proportioned raised ground and lower ground floor flat with direct access on to the beautiful Onslow Gardens and presented to the market in immaculate condition

The property is offered in turnkey condition throughout and boasts an abundance of natural light on both the upper ground and lower ground floors.

The large drawing room leads enviously and directly to the communal gardens through French doors. A modernised kitchen is found akin to the reception room and entertaining space. On the lower ground floor is the sizeable principal suite, two further bedrooms and a family bathroom with a beautiful newly installed study.

As well as access to the beautiful communal gardens, the property enjoys two further outside space areas in a light and bright outside patio and newly installed glass terrace.





Accommodation

- 3 Bedrooms
- Reception room
- Bathroom
- Terrace
- Kitchen
- Residents' parking
- Communal gardens
- Patio

Location

Onslow Gardens is one of the most sought-after garden squares in the heart of South Kensington with a broad array of amenities, shops and restaurants within a short distance of the property. Transport links abound and in close proximity to Gloucester Road and South Kensington tube stations offering access to the District, Circle and Piccadilly lines. In addition, Hyde Park is very near to the property.

Terms

Tenure
Leasehold, 979 years
2 months remaining,
plus share of freehold

Ground Rent
Peppercorn

Service Charge
£10,028 per annum

EPC
Rating D

Local Authority
The Royal Borough of
Kensington & Chelsea

Council Tax
Band G

Guide Price
£3,250,000



Access To
Communal Garden

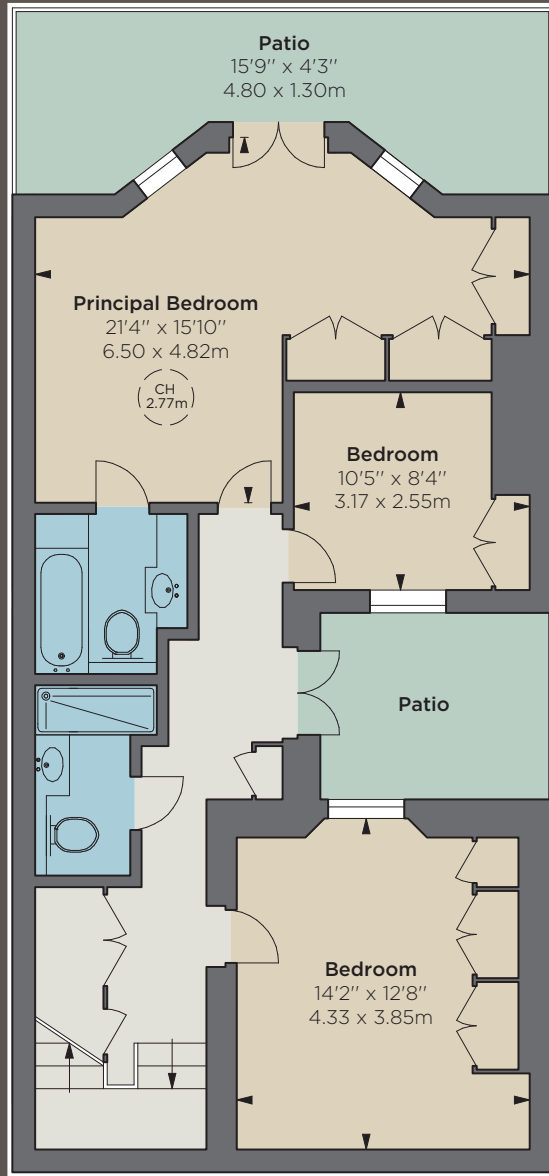
Approximate Gross Internal Area
1,328 sq ft / 123.37 sq m

CH: Ceiling height

Floorplan for guidance only, not to scale or for valuations purposes. It must not be relied upon as a statement of fact. All measurements and areas are approximate and have been prepared in accordance with the current edition of the RICS Code of Measuring Practice.

© Alex Winship Photography Ltd.

IMPORTANT NOTICE: Strutt & Parker gives notice that: 1. These particulars do not constitute an offer or contract or part thereof. 2. All descriptions, photographs and plans are for guidance only and should not be relied upon as statements or representations of fact. All measurements are approximate and not necessarily to scale. Any prospective purchaser must satisfy themselves of the correctness of the information within the particulars by inspection or otherwise. 3. Strutt & Parker does not have any authority to give any representations or warranties whatsoever in relation to this property (including but not limited to planning/building regulations), nor can it enter into any contract on behalf of the Vendor. 4. Strutt & Parker does not accept responsibility for any expenses incurred by prospective purchasers in inspecting properties which have been sold, let or withdrawn. 5. We are able to refer you to SPF Private Clients Limited ("SPF") for mortgage broking services, and to Alexander James Interiors ("AJI"), an interior design service. Should you decide to use the services of SPF, we will receive a referral fee from them of 25% of the aggregate of the fee paid to them by you for the arrangement of a mortgage and any fee received by them from the product provider. Should you decide to use the services of AJI, we will receive a referral fee of 10% of the net income received by AJI for the services they provide to you. 6. If there is anything of particular importance to you, please contact this office and Strutt & Parker will try to have the information checked for you. **Photographs taken June 2024. Particulars prepared August 2024.** Strutt & Parker is a trading style of BNP Paribas Real Estate Advisory & Property Management UK Limited. T1/09/24S&P-240801B-06-GG



South Kensington

90 Old Brompton Road, London SW7 3LQ

+44 (0)20 7581 7000

southken@struttandparker.com
struttandparker.com

f /struttandparker

Over 50 offices across England and Scotland,
including Prime Central London