



Onslow Gardens, South Kensington, SW7

For the finer things in property.

**STRUTT
& PARKER**

BNP PARIBAS GROUP 

Onslow Gardens, South Kensington, SW7

A beautiful and an unusually spacious two double bedroom flat situated on the preferred side of Onslow Gardens offering access to the one of the most sought-after garden squares in London.

2 Bedrooms | 1 Reception room | 2 Bathrooms
Cloakroom | Communal gardens | Caretaker
EPC rating C

This exquisite two-bedroom apartment spans the raised ground and lower ground floors of a prestigious period property in the highly sought-after Onslow Gardens, SW7. Characterized by high ceilings and elegant period features, the apartment seamlessly combines traditional charm with modern finishes. The raised ground floor boasts an expansive living area filled with natural light from large sash windows, highlighting intricate cornicing and original fireplace details.

The property offers a well-balanced living space with a double reception/dining area which lead to a well-proportioned semi-open plan kitchen. On the lower ground floor there are two large bedrooms with ample storage that provide a quiet retreat. The principal suite has a large bathroom, as well as access to a utility room. Furthermore, the second bedroom features a separate dressing room which is adjoined with larger than usual family bathroom and a separate cloakroom.

Terms

Tenure: Share of freehold

Service Charge: £7246.52

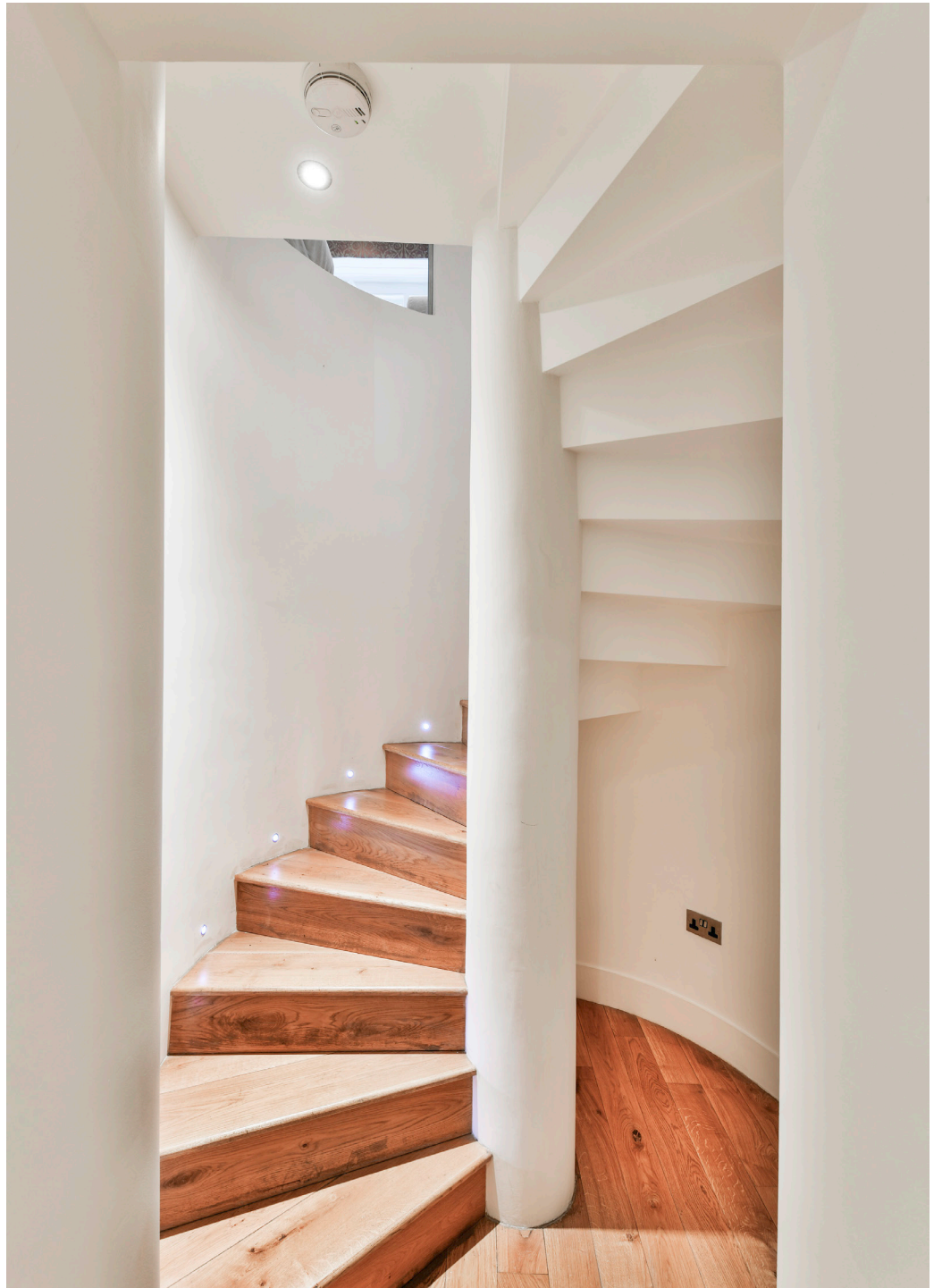
Ground Rent: Peppercorn

Council Tax: Band D

Local Authority: The Royal Borough of Kensington and Chelsea

Asking Price: £2,650,000

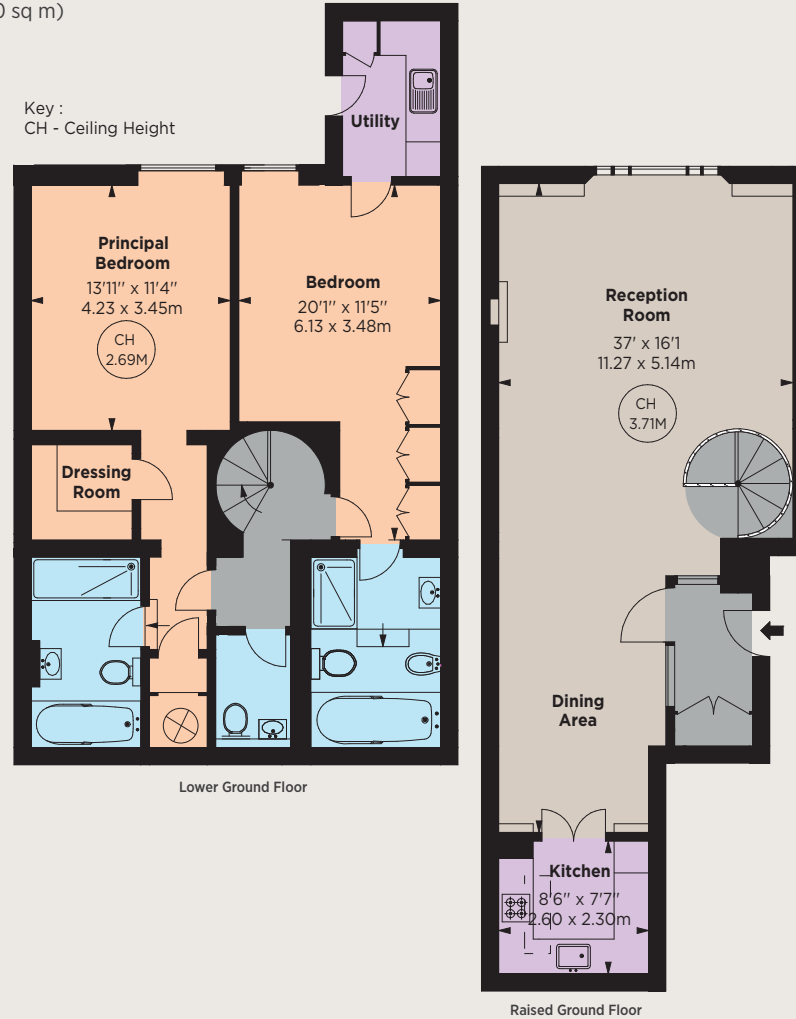






Gross Internal Area 1,422 sq ft (132.10 sq m)
For identification purposes only.

Key :
CH - Ceiling Height



South Kensington

90 Old Brompton Road, London, SW7 3LQ

020 7581 7000

southken@struttandparker.com

IMPORTANT NOTICE

Strutt & Parker gives notice that: 1. These particulars do not constitute an offer or contract or part thereof. 2. All descriptions, photographs and plans are for guidance only and should not be relied upon as statements or representations of fact. All measurements are approximate and not necessarily to scale. Any prospective purchaser must satisfy themselves of the correctness of the information within the particulars by inspection or otherwise. 3. Strutt & Parker does not have any authority to give any representations or warranties whatsoever in relation to this property (including but not limited to planning/building regulations), nor can it enter into any contract on behalf of the Vendor. 4. Strutt & Parker does not accept responsibility for any expenses incurred by prospective purchasers in inspecting properties which have been sold, let or withdrawn. 5. We are able to refer you to SPF Private Clients Limited ("SPF") for mortgage broking services, and to Alexander James Interiors ("AJI"), an interior design service. Should you decide to use the services of SPF, we will receive a referral fee from them of 25% of the aggregate of the fee paid to them by you for the arrangement of a mortgage and any fee received by them from the product provider. Should you decide to use the services of AJI, we will receive a referral fee of 10% of the net income received by AJI for the services they provide to you. 6. If there is anything of particular importance to you, please contact this office and Strutt & Parker will try to have the information checked for you. Photographs taken November 2024. Particulars prepared November 2024 Strutt & Parker is a trading style of BNP Paribas Real Estate Advisory & Property Management UK Limited.



Over 50 offices across England and Scotland,
including Prime Central London

For the finer things in property.

