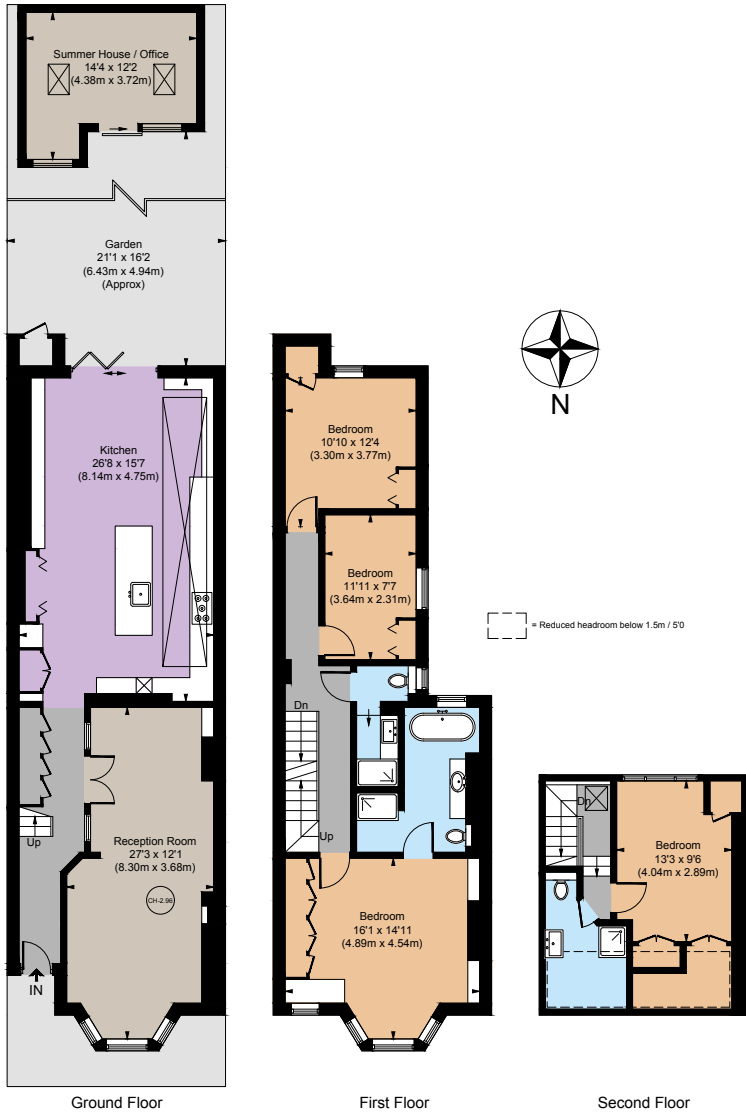


# Oxford Gardens

North Kensington, W10





## An outstanding four bedroom house with south facing garden.

This wonderfully presented low build period house, offers 1,988 sqft over three floors.

The house has a double reception room, plus a large kitchen and dining room opening onto a well-maintained south facing garden. There are four uniquely styled bedrooms, including the principal suite with large en suite bathroom, built in wardrobes and a beautiful bay window. The house also includes two additional shower rooms, a utility room and garden studio room.

Oxford Gardens is a highly sought after, tree lined residential address off Ladbroke Grove and close to Portobello Road, Westbourne Grove and Notting Hill. It is in close proximity to a good selection of outstanding local schools, restaurants, shops, transport links and the open spaces of Holland Park and Kensington Gardens.

### Floorplans

Gross internal area 1,846 sq ft (171.5 sq m)  
Summer House/Office 142 sq ft (13.2 sq m)  
Total 1,988 sq ft (184.7 sq m)  
For identification purposes only.

### General

Tenure: Freehold  
Local Authority: The Royal Borough of Kensington and Chelsea  
Council Tax: Band G  
EPC Rating: C  
Parking: Residents' permit  
Broadband: Available  
Asking Price: £2,500,000

### Notting Hill

303 Westbourne Grove, London, W11 2QA

020 7221 1111

nottinghill@struttandparker.com  
struttandparker.com

**IMPORTANT NOTICE:** Strutt & Parker gives notice that: 1. These particulars do not constitute an offer or contract or part thereof. 2. All descriptions, photographs and plans are for guidance only and should not be relied upon as statements or representations of fact. All measurements are approximate and not necessarily to scale. Any prospective purchaser must satisfy themselves of the correctness of the information within the particulars by inspection or otherwise. 3. Strutt & Parker does not have any authority to give any representations or warranties whatsoever in relation to this property (including but not limited to planning/building regulations), nor can it enter into any contract on behalf of the Vendor. 4. Strutt & Parker does not accept responsibility for any expenses incurred by prospective purchasers in inspecting properties which have been sold, let or withdrawn. 5. We are able to refer you to SPF Private Clients Limited ("SPF") for mortgage broking services, and to Alexander James Interiors ("AJI"), an interior design service. Should you decide to use the services of SPF, we will receive a referral fee from them of 25% of the aggregate of the fee paid to them by you for the arrangement of a mortgage and any fee received by them from the product provider. Should you decide to use the services of AJI, we will receive a referral fee of 10% of the net income received by AJI for the services they provide to you. 6. If there is anything of particular importance to you, please contact this office and Strutt & Parker will try to have the information checked for you. Photographs taken October 2024. Particulars prepared January 2025. Strutt & Parker is a trading style of BNP Paribas Real Estate Advisory & Property Management UK Limited



@struttandparker

Over 50 offices across England and Scotland,  
including Prime Central London

For the finer things in property.

