



Park Street, Mayfair, W1K

# Aldford House, Flat 80, Park Street, London, W1K 7LG

A four-bedroom luxury Mayfair penthouse with breath-taking views across Hyde Park

Reception room | Sitting room | Dining room  
Kitchen | Utility | Cloakroom | Principal bedroom with dressing room, en suite bathroom & en suite shower room | Three further bedrooms, one en suite | Two shower rooms | Three terraces | EPC rating E

## Description

This stunning penthouse apartment is located on the eighth floor and offers more than 3,000 sq. ft. of luxury accommodation. There is clean, neutral décor, bespoke, modern fittings and wooden parquet flooring throughout, including in the three light and airy reception rooms. The main reception has doors opening to terraces on two aspects with views across the park and the Mayfair rooftops, while there is also a formal dining room, a comfortable sitting room and a kitchen with contemporary units and integrated Siemens appliances. The principal bedroom has its own private terrace, a large dressing area and both an en suite bathroom and shower room, while one further bedroom is en suite. There are a further two shower rooms.

The apartment building is located on Park Lane with the wide open spaces of Hyde Park just across the street. The exclusive boutiques and restaurants of Mayfair are moments away, while Hyde Park Corner and Green Park underground stations are both within half a mile (Piccadilly, Jubilee and Victoria lines).

## Terms

**Tenure:** Shared Freehold

**Service Charge:** approx. £28,000pa + a contribution towards the sinking fund of £20,000 pa

**Ground Rent:** £250 pa

**Local Authority:** City of Westminster

**Council Tax Band:** H

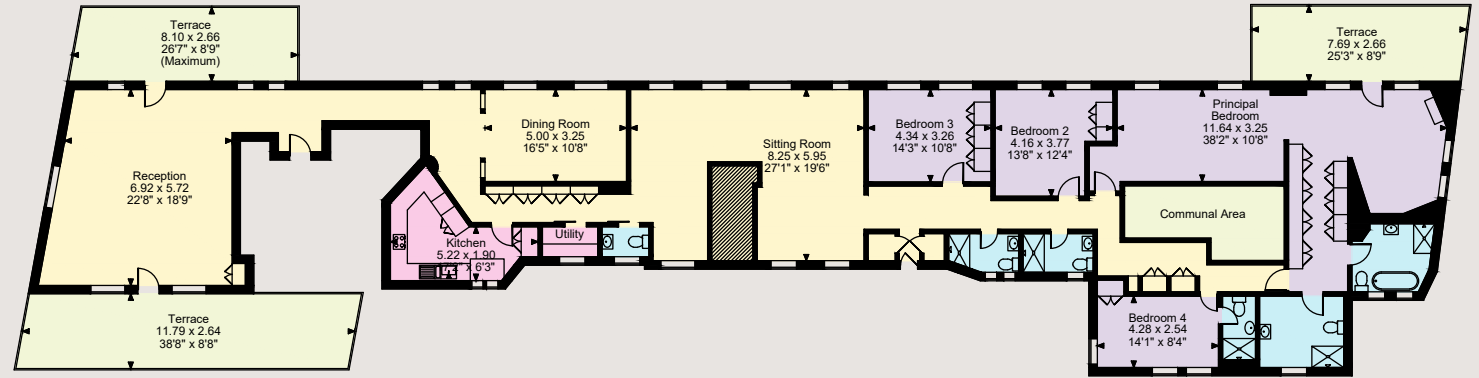
**Guide Price:** £10,955,000







Aldford House, Park Street  
 Internal area 3,238 sq ft (301 sq m)  
 Terrace external area = 769 sq ft (71 sq m)



The position & size of doors, windows, appliances and other features are approximate only.  
 © ehouse. Unauthorised reproduction prohibited. Drawing ref. dig/8576882/KKM

**IMPORTANT NOTICE:** Strutt & Parker gives notice that: 1. These particulars do not constitute an offer or contract or part thereof. 2. All descriptions, photographs and plans are for guidance only and should not be relied upon as statements or representations of fact. All measurements are approximate and not necessarily to scale. Any prospective purchaser must satisfy themselves of the correctness of the information within the particulars by inspection or otherwise. 3. Strutt & Parker does not have any authority to give any representations or warranties whatsoever in relation to this property (including but not limited to planning/building regulations), nor can it enter into any contract on behalf of the Vendor. 4. Strutt & Parker does not accept responsibility for any expenses incurred by prospective purchasers in inspecting properties which have been sold, let or withdrawn. 5. We are able to refer you to SPF Private Clients Limited ("SPF") for mortgage broking services, and to Alexander James Interiors ("AJI"), an interior design service. Should you decide to use the services of SPF, we will receive a referral fee from them of 25% of the aggregate of the fee paid to them by you for the arrangement of a mortgage and any fee received by them from the product provider. Should you decide to use the services of AJI, we will receive a referral fee of 10% of the net income received by AJI for the services they provide to you. 6. If there is anything of particular importance to you, please contact this office and Strutt & Parker will try to have the information checked for you. Photographs taken November 2023. Particulars prepared November 2023. Strutt & Parker is a trading style of BNP Paribas Real Estate Advisory & Property Management UK Limited.

## Mayfair

First Floor, 24 Savile Row, W1S 2ES

**07468 357188**

mayfair@struttandparker.com

