



5 BEDROOM DETACHED
The Brookes



Note: Image for illustrative purposes only.

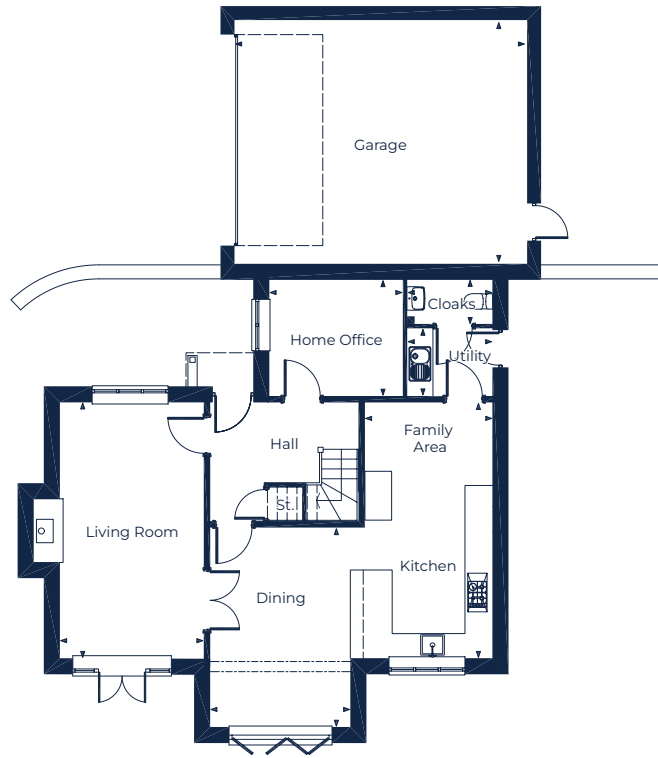
Plot 11 | Sq. ft 1925

This home is designed for entertaining, relaxing and spending quality time together. The design is exclusive to Plot 11.

Includes open plan kitchen, dining and family room with bi-fold doors into the rear secluded garden. A Juliette balcony to bedroom 1, taking in the views of the River Meese and beyond. Ensuites to bedrooms 1 and 2, with fitted wardrobes to both rooms.

This is a corner home, positioned at the head of a private shared driveway. A double garage and driveway are included.

EXCLUSIVE BY
FLETCHER



GROUND FLOOR

Living Room

3.31m x 5.93m (10' 10" x 19' 5")

Kitchen & Family Area

2.94m x 5.92m (9' 8" x 19' 5")

Dining

3.23m x 4.60m (10' 7" x 15' 1")

Home Office

3.07m x 2.67m (10' 1" x 8' 9")

Utility

1.94m x 1.53m (6' 5" x 5')

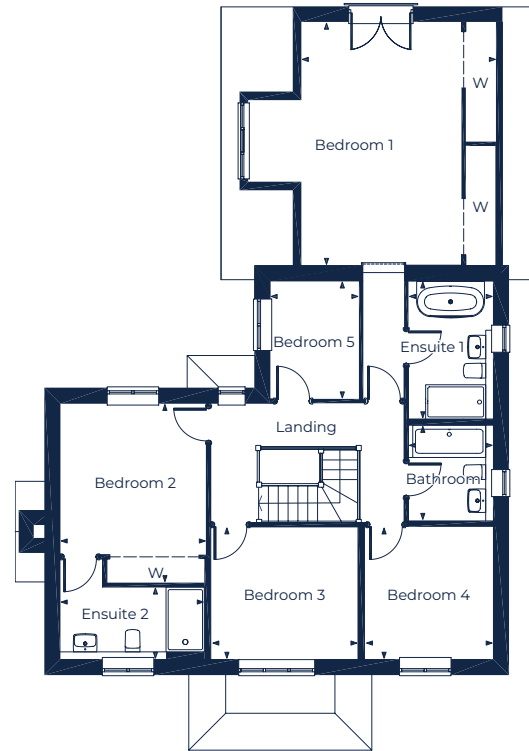
Cloaks

1.94m x 1.00m (6' 5" x 3' 4")

Garage

6.73m x 5.57m (22' 1" x 18' 3")

KEY St. = Store | W = Wardrobe



FIRST FLOOR

Bedroom 1

4.50m x 5.62m (14' 9" x 18' 5")

Ensuite 1

1.93m x 3.16m (6' 4" x 10' 5")

Bedroom 2

3.36m x 4.13m (11' x 13' 6")

Ensuite 2

3.31m x 1.64m (10' 10" x 5' 4")

Bedroom 3

3.36m x 3.04m (11' x 10')

Bedroom 4

2.93m x 3.04m (9' 7" x 10')

Bedroom 5

2.02m x 2.70m (6' 8" x 8' 10")

Bathroom

1.93m x 2.17m (6' 4" x 7' 1")

Please Note: Every Fletcher Homes' development is designed to be as individual as possible. External finishes and specifications may therefore vary on each property. Full details on the home of your choice are available from the Sales Department. This brochure outlines the plans, specifications and layout for the development at the time of printing. The information in the brochure has been prepared for guidance only and does not form part of an offer of a contract or warranty. All floor plans and artists impressions are only intended as a guide and should not be relied upon for accurate measurements. All descriptions and dimensions are indicative and should not be used as the basis for purchasing furnishings, such as carpets or curtains, appliances or furniture. Such information is given in good faith and believed to be correct but any intending purchasers or lessees should not rely upon them as statements or representations of fact but satisfy themselves by inspection or otherwise as to the correctness of each of them. Any customer choices contained within the specification depend upon the construction stage reached when reservation is made. Fletcher Homes operates a policy of continual improvement and reserves the right to alter its designs, specifications or floor plans/layout and prices without prior notice. Should you require further clarification or confirmation of any matters contained in this brochure, they should be raised through your solicitor or conveyor.