



5 BEDROOM DETACHED

## The Jebb



Note: Image for illustrative purposes only.

Plots 12, 14 & 20 | Sq. ft 2038

The Jebb house type is the largest house at Miller's Gate. This impressive house exudes space, creating a relaxed and comfortable home for you.

Includes ensembles and fitted wardrobes to bedrooms 1 & 2.

Both plots 14 & 20 have stunning views of the River Meese and open countryside.

All three properties have large rear gardens and double garages.

Please note: Plot 12 has an attached double garage to side of the property. The window to en-suite 1 is omitted. Ask for full details.

EXCLUSIVE BY  
**FLETCHER**



## GROUND FLOOR

### Living Room

3.47m x 6.69m (11' 5" x 22')

### Kitchen Dining

4.73m x 6.41m (15' 6" x 21')

### Home Office

4.72m x 3.93m (15' 6" x 12' 11")

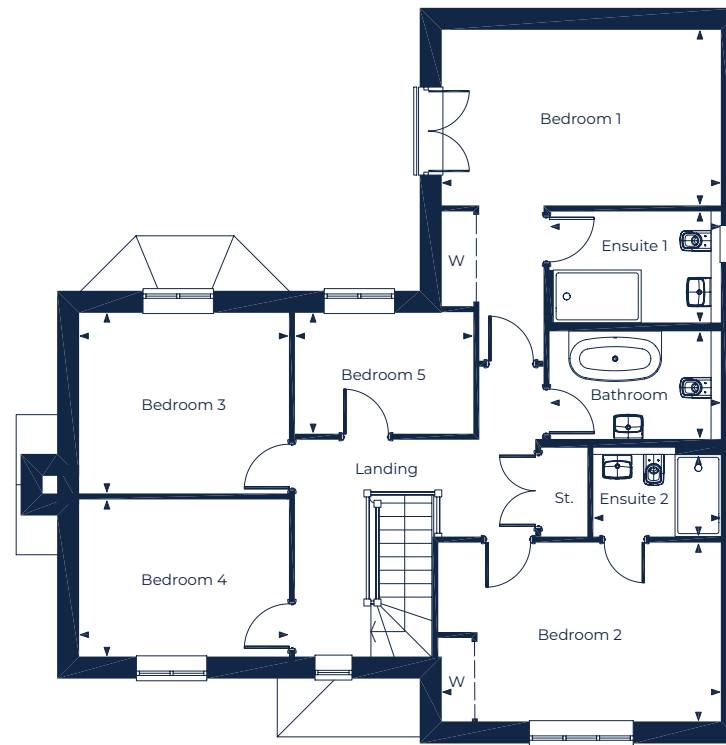
### Utility

2.31m x 1.58m (7' 7" x 5' 2")

### Cloaks

2.46m x 1.07m (8' 1" x 3' 6")

KEY St. = Store | W = Wardrobe



## FIRST FLOOR

### Bedroom 1

4.72m x 2.95m (15' 6" x 9' 8")

### Ensuite 1

2.88m x 1.85m (9' 5" x 6' 1")

### Bedroom 2

4.72m x 3.01m (15' 6" x 9' 10")

### Ensuite 2

2.13m x 1.35m (7' x 4' 5")

### Bedroom 3

3.54m x 3.04m (11' 7" x 10')

### Bedroom 4

3.54m x 2.64m (11' 7" x 8' 8")

### Bedroom 5

2.99m x 2.02m (9' 10" x 6' 7")

### Bathroom

2.88m x 1.78m (9' 5" x 5' 10")

**Please Note:** Every Fletcher Homes' development is designed to be as individual as possible. External finishes and specifications may therefore vary on each property. Full details on the home of your choice are available from the Sales Department. This brochure outlines the plans, specifications and layout for the development at the time of printing. The information in the brochure has been prepared for guidance only and does not form part of an offer of a contract or warranty. All floor plans and artists impressions are only intended as a guide and should not be relied upon for accurate measurements. All descriptions and dimensions are indicative and should not be used as the basis for purchasing furnishings, such as carpets or curtains, appliances or furniture. Such information is given in good faith and believed to be correct but any intending purchasers or lessees should not rely upon them as statements or representations of fact but satisfy themselves by inspection or otherwise as to the correctness of each of them. Any customer choices contained within the specification depend upon the construction stage reached when reservation is made. Fletcher Homes operates a policy of continual improvement and reserves the right to alter its designs, specifications or floor plans/layout and prices without prior notice. Should you require further clarification or confirmation of any matters contained in this brochure, they should be raised through your solicitor or conveyor.