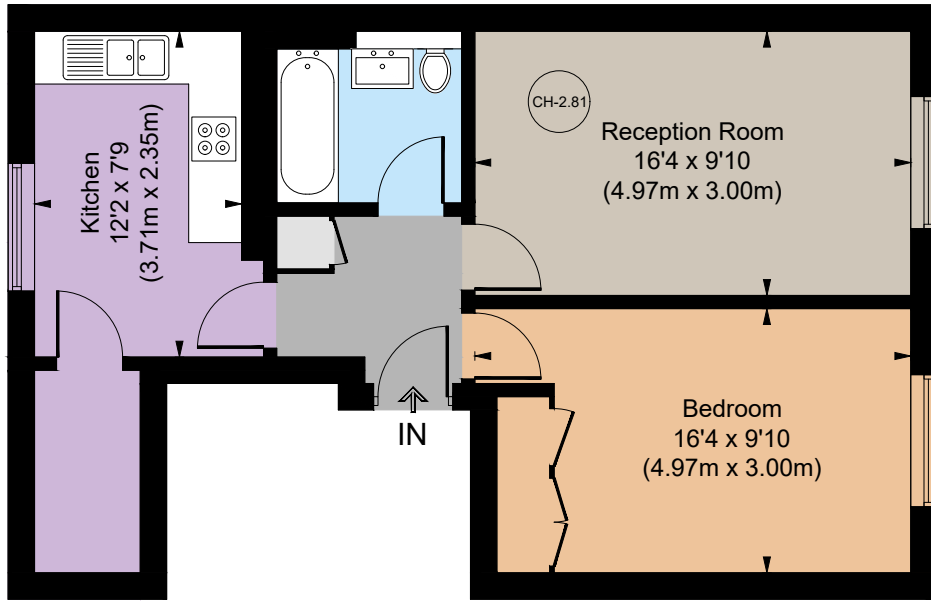


Porchester Square

Bayswater, W2





Second Floor



A charming second floor one bedroom flat located in a period building in Bayswater.

Situated within a beautiful period building this second floor (with lift) one bedroom flat enjoys an abundance of natural light.

The west-facing reception room provides an excellent entertaining space and has a green view overlooking Porchester Square garden. There is a separate kitchen with ample storage space, a good-sized bathroom, and the bedroom benefits from a spacious built-in wardrobe. The flat has lovely wooden floors and has access to a private communal garden located to the rear of the property.

The flat is located within the Bayswater Conservation area, moments from the transport facilities of Royal Oak and a short distance away from Bayswater and Queensway underground stations. The property is within easy reach of the many restaurants and shops located on Westbourne Grove and Queensway.

Floorplans

Gross internal area 557 sq ft (51.8 sq m)

For identification purposes only.

General

Tenure: Leasehold expiring 13/03/2112 (circa 87 years remaining)

Local Authority: The City of Westminster

Service Charge: £2,396.27 per annum approximately

Ground Rent: £10 per annum

Council Tax: Band E

EPC Rating: D

Parking: Residents parking permit

Broadband: Installed at the property

Asking Price: £675,000

Notting Hill

303 Westbourne Grove, London, W11 2QA

020 7221 1111

nottinghill@struttandparker.com

struttandparker.com

IMPORTANT NOTICE: Strutt & Parker gives notice that: 1. These particulars do not constitute an offer or contract or part thereof. 2. All descriptions, photographs and plans are for guidance only and should not be relied upon as statements or representations of fact. All measurements are approximate and not necessarily to scale. Any prospective purchaser must satisfy themselves of the correctness of the information within the particulars by inspection or otherwise. 3. Strutt & Parker does not have any authority to give any representations or warranties whatsoever in relation to this property (including but not limited to planning/building regulations), nor can it enter into any contract on behalf of the Vendor. 4. Strutt & Parker does not accept responsibility for any expenses incurred by prospective purchasers in inspecting properties which have been sold, let or withdrawn. 5. We are able to refer you to SPF Private Clients Limited ("SPF") for mortgage broking services, and to Alexander James Interiors ("AJI"), an interior design service. Should you decide to use the services of SPF, we will receive a referral fee from them of 25% of the aggregate of the fee paid to them by you for the arrangement of a mortgage and any fee received by them from the product provider. Should you decide to use the services of AJI, we will receive a referral fee of 10% of the net income received by AJI for the services they provide to you. 6. If there is anything of particular importance to you, please contact this office and Strutt & Parker will try to have the information checked for you. Photographs taken February 2025. Particulars prepared February 2025. Strutt & Parker is a trading style of BNP Paribas Real Estate Advisory & Property Management UK Limited



@struttandparker

Over 50 offices across England and Scotland, including Prime Central London

For the finer things in property.

