

Queens Gardens

Bayswater, W2



A stunning one bedroom flat over-looking communal gardens.

Located on the raised ground floor within a beautiful, well-maintained period building moments from Kensington Gardens and Hyde Park, this property offers spacious accommodation, with high ceilings and an abundance of natural light.



1 RECEPTION ROOM



1 BEDROOM



1 BATHROOM



SHARE OF FREEHOLD



617 SQ FT



**ASKING PRICE
£775,000**

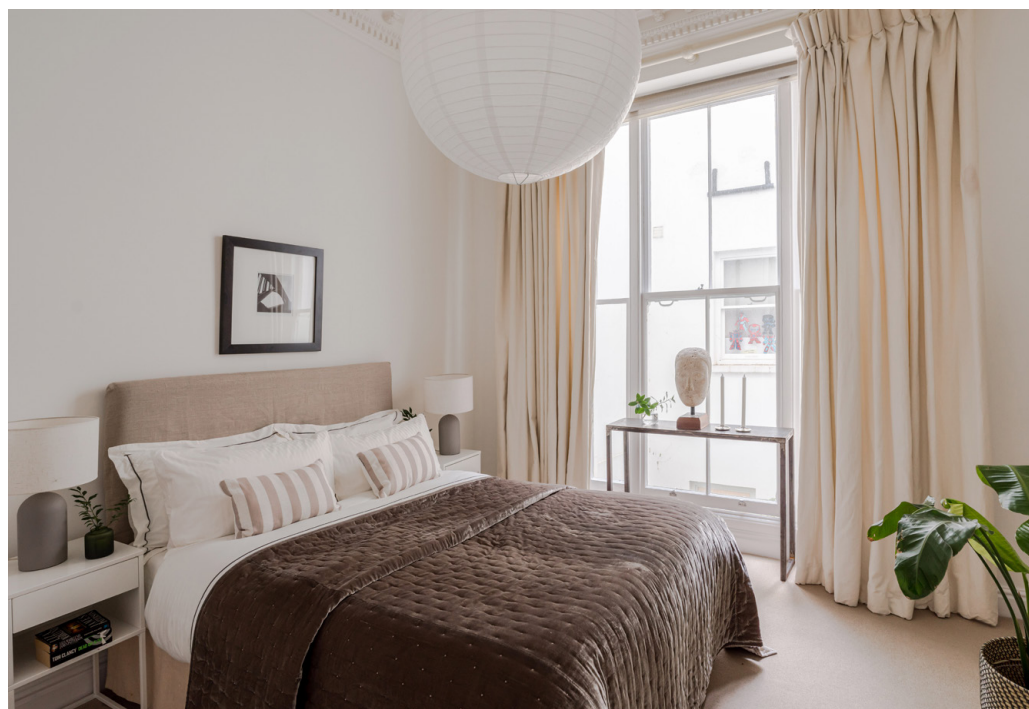


The property

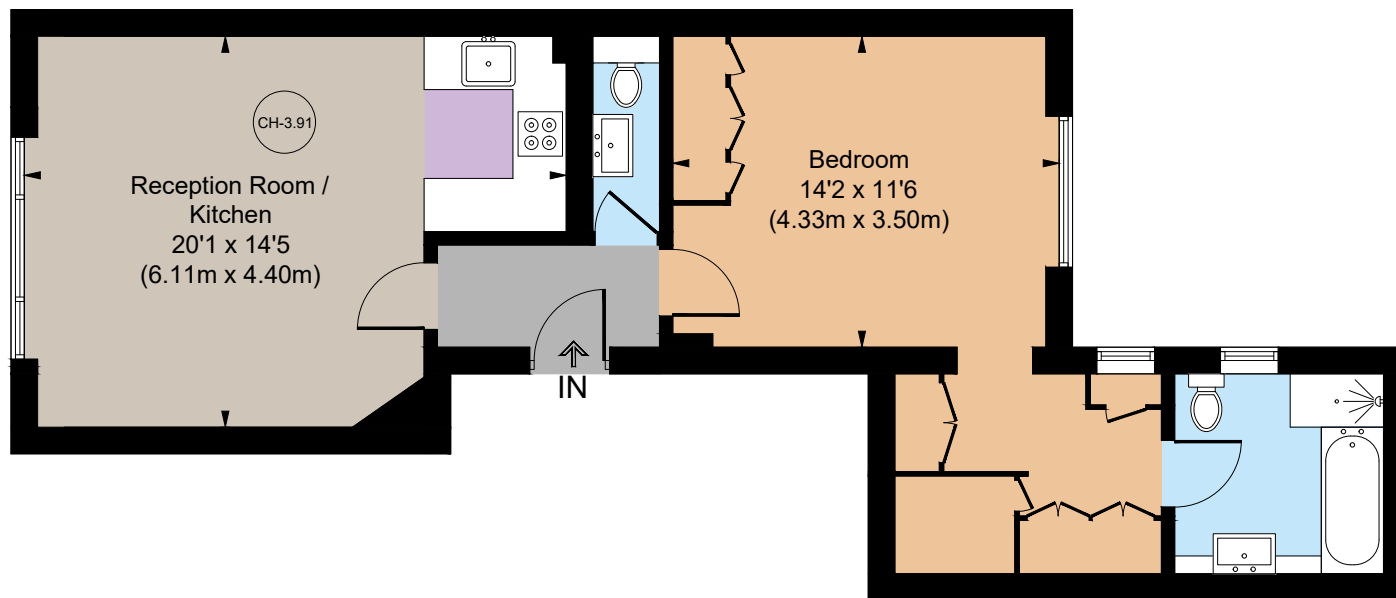
The property is comprised of an impressive open plan reception and kitchen boasting ornate period cornicing and large sash windows, a guest cloakroom, a large bedroom with an abundance of built in wardrobes, and a separate dressing room leading to a luxurious bathroom.

Location

Queens Gardens is an attractive garden square in the heart of Bayswater, formed mainly of impressive white stucco fronted buildings. It is within quarter of a mile of Kensington Gardens (Hyde Park) and the refurbished Italian Gardens. Within one of the best connected areas of central London, nearby transport links include underground stations at Lancaster Gate & Queensway (Central Line), Bayswater (Circle, District) and Paddington (Circle, District, Bakerloo and Hammersmith and City, National Rail, Heathrow Express and CrossRail/Elizabeth line).







Ground Floor



Floorplans

Internal area 617 sq ft (57.3 sq m)

For identification purposes only.

General

Tenure: Share of Freehold plus Leasehold of 961 years

Local Authority: City of Westminster

Service Charge: £3,308pa

Council Tax: Band E

EPC Rating: C

IMPORTANT NOTICE: Strutt & Parker gives notice that: 1. These particulars do not constitute an offer or contract or part thereof. 2. All descriptions, photographs and plans are for guidance only and should not be relied upon as statements or representations of fact. All measurements are approximate and not necessarily to scale. Any prospective purchaser must satisfy themselves of the correctness of the information within the particulars by inspection or otherwise. 3. Strutt & Parker does not have any authority to give any representations or warranties whatsoever in relation to this property (including but not limited to planning/building regulations), nor can it enter into any contract on behalf of the Vendor. 4. Strutt & Parker does not accept responsibility for any expenses incurred by prospective purchasers in inspecting properties which have been sold, let or withdrawn. 5. We are able to refer you to SPF Private Clients Limited ("SPF") for mortgage broking services, and to Alexander James Interiors ("AJI"), an interior design service. Should you decide to use the services of SPF, we will receive a referral fee from them of 25% of the aggregate of the fee paid to them by you for the arrangement of a mortgage and any fee received by them from the product provider. Should you decide to use the services of AJI, we will receive a referral fee of 10% of the net income received by AJI for the services they provide to you. 6. If there is anything of particular importance to you, please contact this office and Strutt & Parker will try to have the information checked for you. Photographs taken November 2024. Particulars prepared November 2024. Strutt & Parker is a trading style of BNP Paribas Real Estate Advisory & Property Management UK Limited

Notting Hill

303 Westbourne Grove, London, W11 2QA

020 7221 1111

nottinghill@struttandparker.com

struttandparker.com



@struttandparker

Over 50 offices across England and Scotland,
including Prime Central London

For the finer things in property.

