



Great Walton, Sandwich Road, Eastry, Kent

For the finer things in property.



Great Walton Sandwich Road, Eastry, Kent CT13 0DN

An exquisite Georgian home set in mature gardens with outbuildings, swimming pool and tennis court

Sandwich 2.5 miles, Deal 5.9 miles, Thanet Parkway station 7.2 miles (London St Pancras from 70 minutes), A2 8 miles, Dover Priory station 11.8 miles (London St Pancras from 66 minutes), Canterbury 15 miles, M2 (Junction 7) 28.1 miles, Ashford 29.3 miles

Reception hall | Drawing room | Sitting room
Dining room | Study | Conservatory | Billiard room | Kitchen/breakfast room | Utility
Cloakroom | Cellar | Principal bedroom with dressing area and en suite bathroom | 5 Further bedrooms | 3 Further bathrooms | Attic store rooms | Garden | Swimming pool | Pool store
Tennis courts | Garage, adjoining store rooms and external WC | Double car port | Extensive outbuildings | Tractor shed | The Mushroom House: Bedroom and bathroom | EPC rating D
In all about 4.69 acres

The property

Grade II listed, Great Walton is a beautifully presented 17th-century red brick, tile-hung and weatherboarded country property with 18th and 19th-century additions, offering almost 5,000 sq ft of unique and versatile accommodation arranged over three spacious and light-filled floors. The property retains an abundance of charming features, including original windows, fine feature fireplaces, tall ornately corniced ceilings, exposed timber beams and more.

The front door opens to a generous reception hall with a carved staircase. Either side of the hall are the formal dining room and the bright sitting room, both with feature fireplaces. The accommodation flows into the elegant drawing

room, with its marble fireplace and triple arched French doors opening to the south-westerly terrace, alongside which is an attractive conservatory with domed skylight. A boot room and cloakroom are situated behind the staircase.

Further along the hall is the kitchen/breakfast room, with stone floors, bay windows with peaceful garden views, tasteful sage-coloured cabinetry, various appliances and an island. Alongside is a utility with a hatch to the cellar below. From here a door leads to an impressive walkway with a trail of arched glazed window panels, and a staircase to the 27 ft tongue and groove panelled and vaulted billiard room with herringbone floors and cast-iron fireplace.

The airy first-floor landing branches off into a dual-aspect study or seventh bedroom, along with a family bathroom and three charming bedrooms, one of which has an en suite bathroom. A short flight of stairs leads to the principal suite, which benefits from fitted wardrobes and an en suite bathroom.





The second floor is home to two further bedrooms, both well served by a family bathroom and a range of adaptable store rooms.

Outside

The property is approached via a large, gravelled carriage driveway opening to a courtyard beside the brick-built stores, carports and garage. The house has a beautiful facade adorned with pretty climbers and sits within beautiful mature gardens and grounds.

There are sunny paved terraces, several divided formal landscaped gardens with trimmed hedging and shrubs, extensive level lawns interspersed with mature and towering specimen trees, topiary and a wealth of colourful stocked herbaceous beds, along with a swimming pool and tennis court.

Location

Thriving Eastry offers ample local amenities, including a store, Post Office, butchers, bakers, pharmacy, public house and several eateries. Nearby Sandwich provides further shopping and cultural attractions, whilst an extensive array of facilities and educational options can be found in the city of Canterbury.

The Kent coast and Pegwell Bay National Nature Reserve offer many walking and cycling routes. There are numerous well-regarded golf courses nearby, including Royal St George's. Sandwich station provides frequent connections to London and the A2 and M2 offer convenient road links. There is good access to the Continent.







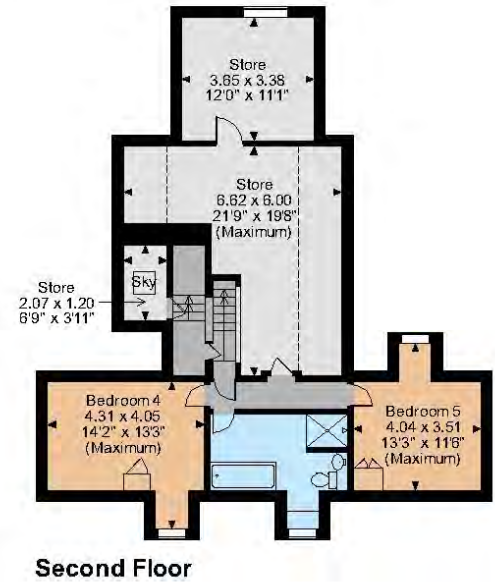
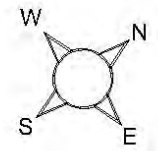
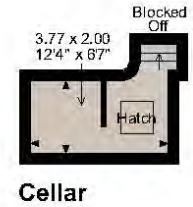
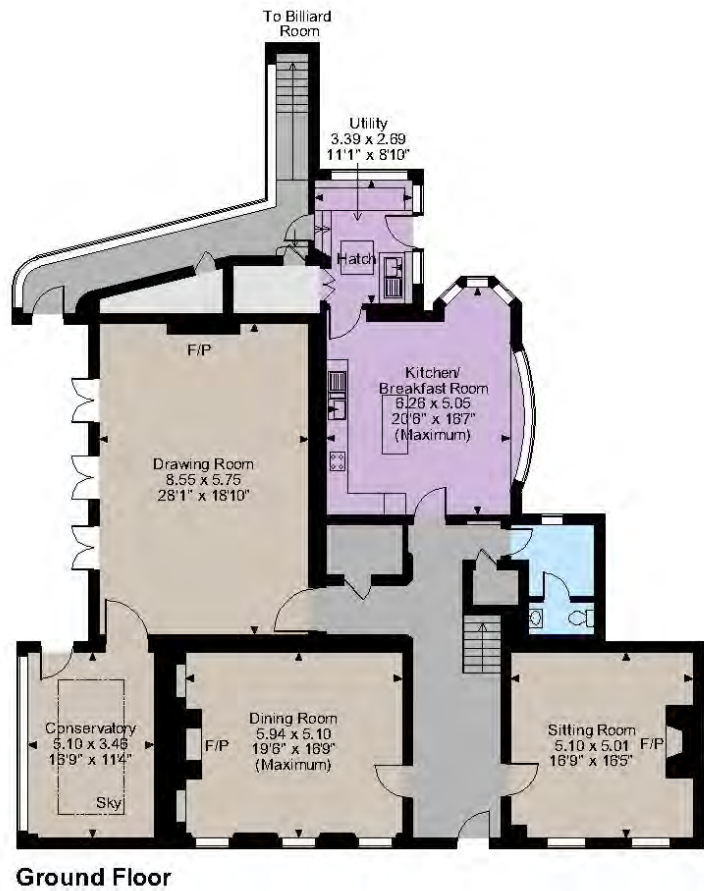








Great Walton, Sandwich Road, Eastry, Kent
 Main House internal area 4,962 sq ft (461 sq m)
 For identification purposes only.

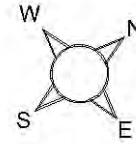


The position & size of doors, windows, appliances and other features are approximate only.

□□□□ Denotes restricted head height

© ehouse. Unauthorised reproduction prohibited. Drawing ref. dig/8587111/SLU

Great Walton, Sandwich Road, Eastry, Kent
 Garage internal area 613 sq ft (57 sq m)
 Outbuildings internal area 3,769 sq ft (350 sq m)
 Billiard Room internal area 534 sq ft (50 sq m)
 Total internal area 4,916 sq ft (457 sq m)
 For identification purposes only.



The position & size of doors, windows, appliances and other features are approximate only.

□□□ Denotes restricted head height

© ehouse. Unauthorised reproduction prohibited. Drawing ref. dig/8587111/SLU



Directions

From Canterbury: Leave on the A2 towards Dover and continue on the dual carriageway at Whitfield towards Dover. Take the first turning on the left onto the A256 (signposted to Ramsgate and Sandwich). Continue on the A256, crossing straight over three roundabouts before turning left into Sandwich Road (signposted to Eastry/Woodnesborough). Continue on Sandwich Road for a few hundred metres and the brick-walled entry to Great Walton will be seen on the right.

General

Local Authority: Dover District Council

Services: All mains services; gas heating

Council Tax: Band G

Planning: Prospective purchasers should make their own enquiries of Dover District Council

Tenure: Freehold

Guide Price: £2,250,000

Canterbury


2 St Margaret's Street, Canterbury, Kent CT1 2SL

01227 473700

canterbury@struttandparker.com

struttandparker.com

 @struttandparker

 /struttandparker

Over 45 offices across England and Scotland,
including Prime Central London

IMPORTANT NOTICE: Strutt & Parker gives notice that: 1. These particulars do not constitute an offer or contract or part thereof. 2. All descriptions, photographs and plans are for guidance only and should not be relied upon as statements or representations of fact. All measurements are approximate and not necessarily to scale. Any prospective purchaser must satisfy themselves of the correctness of the information within the particulars by inspection or otherwise. 3. Strutt & Parker does not have any authority to give any representations or warranties whatsoever in relation to this property (including but not limited to planning/building regulations), nor can it enter into any contract on behalf of the Vendor. 4. Strutt & Parker does not accept responsibility for any expenses incurred by prospective purchasers in inspecting properties which have been sold, let or withdrawn. 5. We are able to refer you to SPF Private Clients Limited ("SPF") for mortgage broking services, and to Alexander James Interiors ("AJI"), an interior design service. Should you decide to use the services of SPF, we will receive a referral fee from them of 25% of the aggregate of the fee paid to them by you for the arrangement of a mortgage and any fee received by them from the product provider. Should you decide to use the services of AJI, we will receive a referral fee of 10% of the net income received by AJI for the services they provide to you. 6. If there is anything of particular importance to you, please contact this office and Strutt & Parker will try to have the information checked for you. Photographs taken April and September 2023 and May 2024. Particulars prepared March 2024. Strutt & Parker is a trading style of BNP Paribas Real Estate Advisory & Property Management UK Limited



For the finer things in property.

