



The Bull Ring Cottage, Stottesdon, Kidderminster



# The Bull Ring Cottage, Stottesdon, Kidderminster DY14 8UD

A charming period property offering extensive accommodation, including outbuildings and set within a beautiful garden and desirable village.

Ludlow 12 miles. Cleobury Mortimer 5.5 miles, Kidderminster 12 miles, Hereford 36 miles.

Reception hall | Sitting room | Music room  
Dining room | Family room | Study  
Conservatory | Kitchen/breakfast room  
5 Bedrooms | 2 Family bathrooms | Shower room Studio | 2 Garages | Workshop | Goat shed  
Wood store | Garden  
EPC Rating E

## The property

With just under 3,000 sq. ft of accommodation, arranged over two-floors, the cottage offers a wealth of bygone charm, including exposed beams and posts, original fireplaces and a distinctive stained glass window with coat of arms. On the ground floor, a sitting room is centred around an inglenook fireplace with ancient timbers creating a divide to the adjoining music room. The adjacent formal dining room offers the perfect setting for family gatherings and hosting guests, with French doors leading into a light-filled conservatory where views over the garden can be enjoyed. A family room offers an alternative relaxed setting with access through to the kitchen/breakfast room. Fitted with wall and base level units, the kitchen has a Range stove at its heart, and ample space for informal dining, with an adjoining utility providing a home for domestic appliances and additional cabinetry.

A wooden staircase, concealed behind a rustic, timber door in the sitting room, rises to the first floor accommodation, which comprises five bedrooms and two family bathrooms which are complemented by a shower room situated on the floor below. Supplemental accommodation is provided in a studio outbuilding, with a kitchen area, offering flexible-use options.

## Outside

The glorious garden offers an open-air sanctuary with manicured, evergreen hedging enclosing a number of 'outdoor rooms' and framing specimen trees. Stone pathways meander through the garden and low stone walling forms terracing to accommodate the gently sloping grounds, with pockets of attractive planting creating a pleasing display. A patio adjoins the house offering opportunities for outdoor dining and relaxation and to the side, a dedicated vegetable garden offers a haven for those with a desire to cultivate. A low wall fronts the lane, with a decorative wrought-iron gate providing pedestrian access to the entrance door with areas of lawn to either side and ornamental climbing plants enhance the front elevations. Vehicular access is via wooden gates onto a driveway giving access to a triple timber garage, which is adjoined by a goat shed and wood store.

## Location

The village of Stottesdon benefits from a public house (The Fighting Cocks), a community run shop, a doctor's surgery and a primary school. The nearby market town of Cleobury Mortimer provides a good range of everyday facilities with both primary and secondary schools. The historic market town of Ludlow is just a short distance away and famed for its independent shops, interesting architecture, vibrant festivals and well-deserved gastronomic reputation. Birmingham and Worcester are within striking distance and provide a large and varied range of amenities.



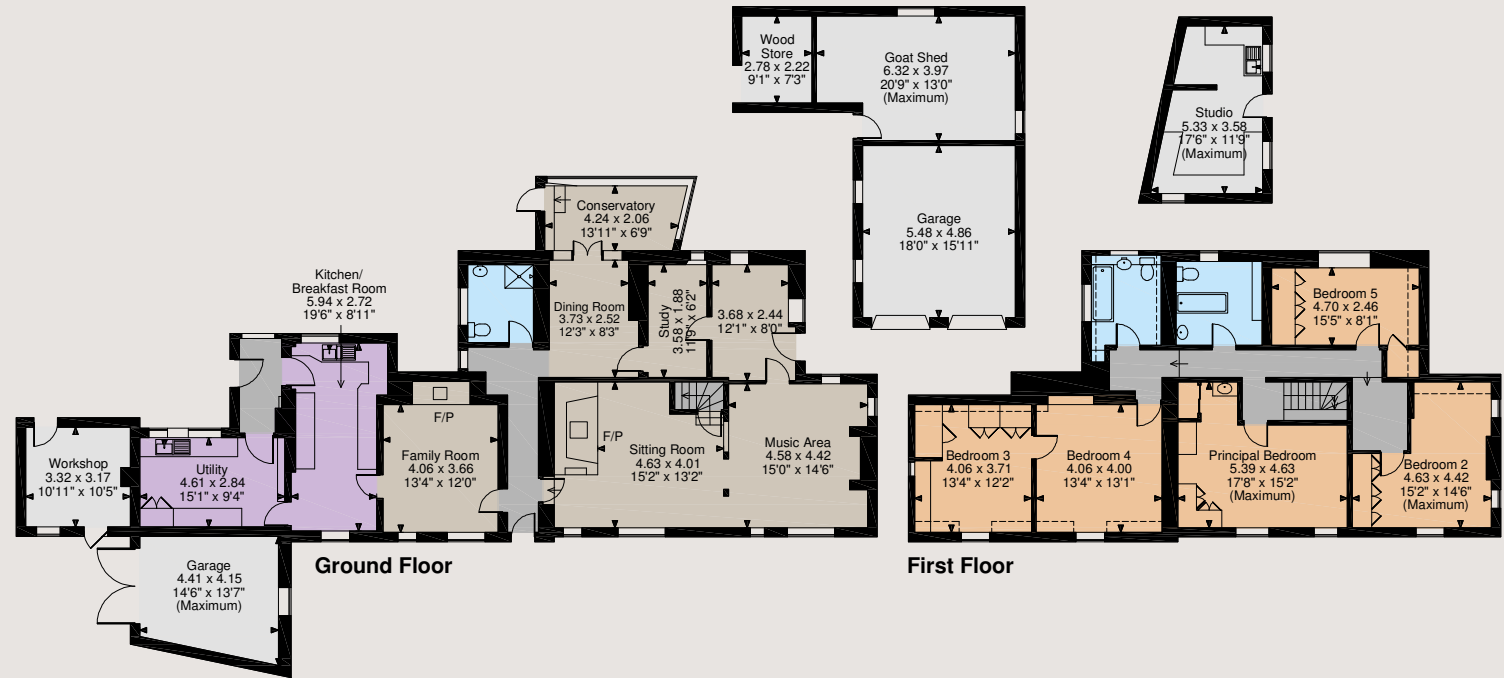
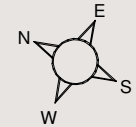








The Bull Ring Cottage, Stottesdon  
 Main House internal area 2,922 sq ft (271 sq m)  
 Garages internal area 460 sq ft (43 sq m)  
 Workshop internal area 113 sq ft (11 sq m)  
 Outbuildings internal area 494 sq ft (46 sq m)



The position & size of doors, windows, appliances and other features are approximate only.

□ □ □ □ Denotes restricted head height

© ehouse. Unauthorised reproduction prohibited. Drawing ref. dig/8506744/OHL

## Directions

What2words:///horizons.galopped.mailboxes

## General

**Local Authority:** Shropshire Council  
**Services:** Mains electricity, water and drainage.  
 Gas central heating  
**Council Tax:** G  
**Tenure:** Freehold  
**Guide price:** £695,000  
**Fixtures and Fittings:** Only items known as fixtures and fittings will be included in the sale. Certain items may be available by separate negotiation.  
**Viewings by appointment only.**

## Ludlow

26 Bull Ring, Ludlow, Shropshire SY8 1AA

**01584 873711**

ludlow@struttandparker.com  
 struttandparker.com

@struttandparker

/struttandparker

Over 45 offices across England and Scotland, including Prime Central London

**IMPORTANT NOTICE:** Strutt & Parker gives notice that: 1. These particulars do not constitute an offer or contract or part thereof. 2. All descriptions, photographs and plans are for guidance only and should not be relied upon as statements or representations of fact. All measurements are approximate and not necessarily to scale. Any prospective purchaser must satisfy themselves of the correctness of the information within the particulars by inspection or otherwise. 3. Strutt & Parker does not have any authority to give any representations or warranties whatsoever in relation to this property (including but not limited to planning/building regulations), nor can it enter into any contract on behalf of the Vendor. 4. Strutt & Parker does not accept responsibility for any expenses incurred by prospective purchasers in inspecting properties which have been sold, let or withdrawn. 5. We are able to refer you to SPF Private Clients Limited ("SPF") for mortgage broking services, and to Alexander James Interiors ("AJI"), an interior design service. Should you decide to use the services of SPF, we will receive a referral fee from them of 25% of the aggregate of the fee paid to them by you for the arrangement of a mortgage and any fee received by them from the product provider. Should you decide to use the services of AJI, we will receive a referral fee of 10% of the net income received by AJI for the services they provide to you. 6. If there is anything of particular importance to you, please contact this office and Strutt & Parker will try to have the information checked for you. Photographs taken June 2022. Particulars prepared July 2022. Strutt & Parker is a trading style of BNP Paribas Real Estate Advisory & Property Management UK Limited