

Sullivan Court

London, SW5



**STRUTT
& PARKER**

BNP PARIBAS GROUP 

Large three-bedroom flat in portered block, with large terrace and secure underground parking.

A three-bedroom flat on the raised ground floor in a well maintained portered block, Sullivan Court.



1 RECEPTION ROOM



3 BEDROOMS



2 BATHROOMS



LEASEHOLD



871 SQ FT



**GUIDE PRICE
£700,000**



The property

The property is situated at the back of the building with lovely views to Redfield Lane. It benefits from a secure underground parking space and an expansive roof terrace.

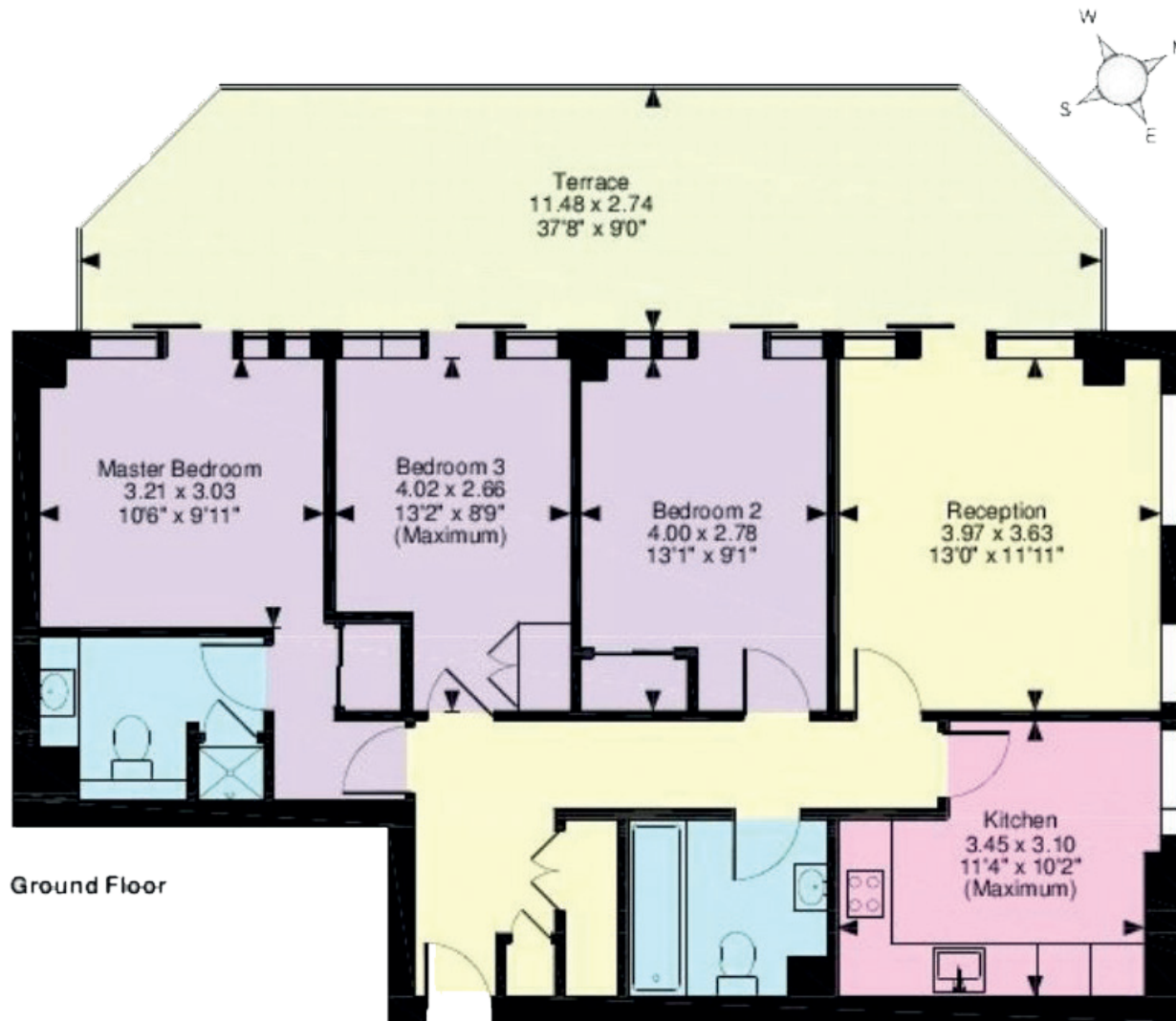
Location

Sullivan Court is in the very heart of Earls Court, and in close proximity to the tube station and vast amenities Earls Court has to offer. The remaining lease term is circa 61 Years.

Bramham Gardens is a popular, secluded and private garden square located just north of Old Brompton Road and The Boltons so well placed for the nearby restaurants and the transport links of both Gloucester Road and Earls Court.







Floorplans

Gross internal area 871 sq ft (81 sq m)

For identification purposes only.

General

Tenure: Leasehold 61 years 5 months

Local Authority: The Royal Borough of Kensington and Chelsea

Service Charge: £4,955 pa

Ground Rent: £250 pa

Council Tax: Band F

EPC Rating: D

Parking: Off street parking, garage and underground parking

Broadband: Is installed at the property

IMPORTANT NOTICE: Strutt & Parker gives notice that: 1. These particulars do not constitute an offer or contract or part thereof. 2. All descriptions, photographs and plans are for guidance only and should not be relied upon as statements or representations of fact. All measurements are approximate and not necessarily to scale. Any prospective purchaser must satisfy themselves of the correctness of the information within the particulars by inspection or otherwise. 3. Strutt & Parker does not have any authority to give any representations or warranties whatsoever in relation to this property (including but not limited to planning/building regulations), nor can it enter into any contract on behalf of the Vendor. 4. Strutt & Parker does not accept responsibility for any expenses incurred by prospective purchasers in inspecting properties which have been sold, let or withdrawn. 5. We are able to refer you to SPF Private Clients Limited ("SPF") for mortgage broking services, and to Alexander James Interiors ("AJI"), an interior design service. Should you decide to use the services of SPF, we will receive a referral fee from them of 25% of the aggregate of the fee paid to them by you for the arrangement of a mortgage and any fee received by them from the product provider. Should you decide to use the services of AJI, we will receive a referral fee of 10% of the net income received by AJI for the services they provide to you. 6. If there is anything of particular importance to you, please contact this office and Strutt & Parker will try to have the information checked for you. Photographs taken January 2024. Particulars prepared January 2025. Strutt & Parker is a trading style of BNP Paribas Real Estate Advisory & Property Management UK Limited

South Kensington

90 Old Brompton Road, London, SW7 3LQ

020 7581 7000

southken@struttandparker.com

struttandparker.com



@struttandparker

Over 50 offices across England and Scotland,
including Prime Central London

For the finer things in property.

