



Foxholes, Tennysons Lane, Haslemere

For the finer things in property.

**STRUTT
& PARKER**

BNP PARIBAS GROUP 

Foxholes, Tennysons Lane, Haslemere, GU27 3BJ

Offering spectacular views over the Sussex Weald to the South Downs, this unique detached house is set in peaceful and secluded woodland on the edge of Blackdown National Trust forest, and close to Haslemere town and mainline station. Planning permission granted for internal alterations: SDNP/23/05113/HOUS.

Haslemere town centre 1.9 miles, Haslemere mainline station 2.4 miles (London Waterloo 53 minutes), London 42 miles

Reception hall | Sitting room | Family room
Study/office | Kitchen/breakfast room | Larder
Utility | Cloakroom | Principal bedroom with
walk-in wardrobe | 4 Further bedrooms | 3 Bath/
shower rooms (1 en suite) | Loft room | Cottage
About 5.7 acres | EPC rating F

The property

Foxholes is a detached, characterful property with planning permission granted to create a superb family home with open-concept living, taking full advantage of the striking panoramic views. The house is believed to be a former part of the neighbouring Aldworth estate built in the 1860s by Alfred Lord Tennyson. Making the most of its elevated woodland position, with much of the accommodation opening onto a large sun deck and taking in the magnificent views of the surrounding forest, which is set on the highest point of the South Downs. The principal rooms have been designed with large windows to maximise the far reaching views.

The charming, detached stone built cottage with vaulted and timbered roof can be adapted into additional guest accommodation or home office.

Outside

The house is approached via a long private drive leading to a parking and turning area. A path leads down to a stone paved barbecue area surrounded by banks planted with a variety of ornamental trees and shrubs. The path continues to an elevated timber sun deck extending the full width of the house, with it's vantage point for enjoying the magnificent views. There are steps up to a roof terrace and down into the gardens. The grounds slope away from the house into a valley, planted with a wide variety of shrubs and trees and where a spring-fed stream trickles down through a series of ponds to a small lake with an island. Beyond the garden the grounds comprises of mature woodland, which in spring enjoys a blanket of bluebells.

Location

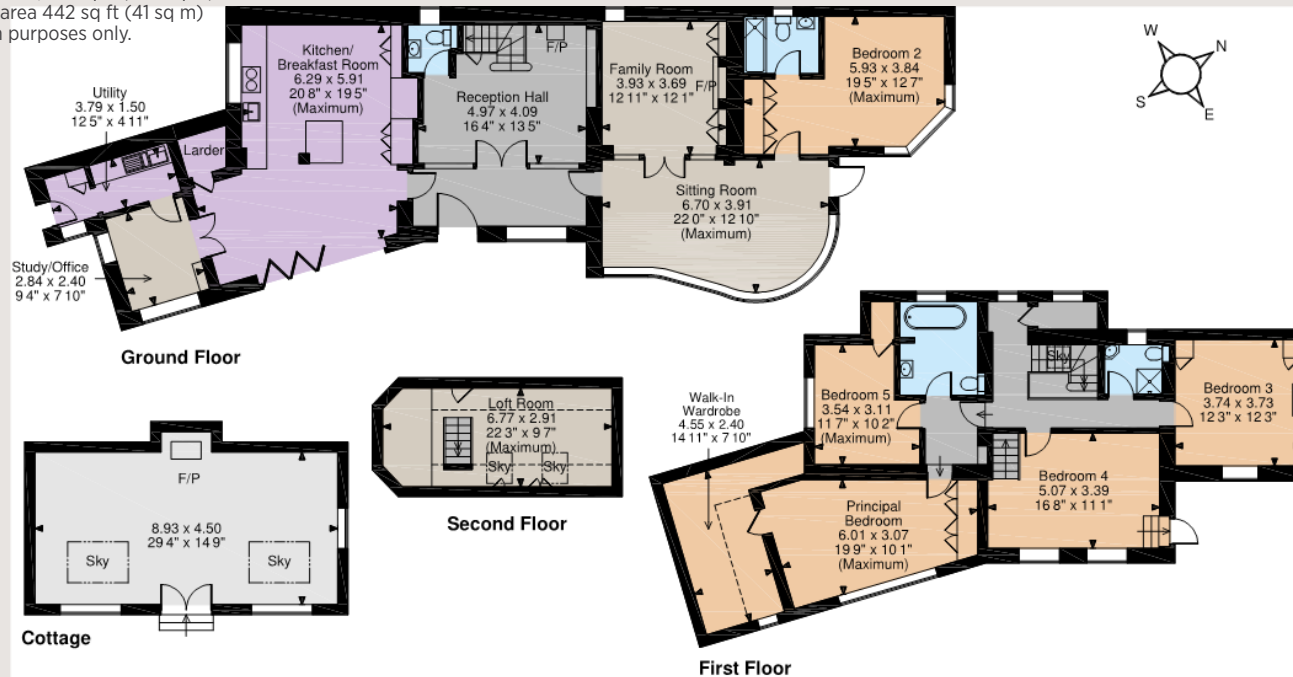
Foxholes is surrounded by delightful woodland and in a highly desirable and secluded location on one of Haslemere's most sought after residential roads. Tennyson's Lane, named after poet Alfred Lord Tennyson, leads to hundreds of acres of National Trust land providing wonderful walking and riding countryside. Haslemere town is about 1.9 miles and provides a good variety of boutique shopping, restaurants, a Waitrose supermarket, recreational facilities and a mainline station to London Waterloo. The A3 London to Portsmouth road is about three miles distant providing access through the Hindhead tunnel to Guildford, London, Heathrow, Gatwick, the M25, and south to the coast.

There is a fine selection of schools in the area including St Ives, St Edmunds, The Heights, Highfield, Brookham, Amesbury and the Royal School (both junior and senior). Sporting facilities include golf at Liphook and West Surrey, racing at Goodwood and Fontwell, polo at Cowdray Park and sailing off the south coast at Chichester.





Floorplans
House internal area 2,737 sq ft (254 sq m)
Cottage internal area 442 sq ft (41 sq m)
For identification purposes only.



IMPORTANT NOTICE: Strutt & Parker gives notice that: 1. These particulars do not constitute an offer or contract or part thereof. 2. All descriptions, photographs and plans are for guidance only and should not be relied upon as statements or representations of fact. All measurements are approximate and not necessarily to scale. Any prospective purchaser must satisfy themselves of the correctness of the information within the particulars by inspection or otherwise. 3. Strutt & Parker does not have any authority to give any representations or warranties whatsoever in relation to this property (including but not limited to planning/building regulations), nor can it enter into any contract on behalf of the Vendor. 4. Strutt & Parker does not accept responsibility for any expenses incurred by prospective purchasers in inspecting properties which have been sold, let or withdrawn. 5. We are able to refer you to SPF Private Clients Limited ("SPF") for mortgage broking services, and to Alexander James Interiors ("AJI"), an interior design service. Should you decide to use the services of SPF, we will receive a referral fee from them of 25% of the aggregate of the fee paid to them by you for the arrangement of a mortgage and any fee received by them from the product provider. Should you decide to use the services of AJI, we will receive a referral fee of 10% of the net income received by AJI for the services they provide to you. 6. If there is anything of particular importance to you, please contact this office and Strutt & Parker will try to have the information checked for you. Photographs taken September 2023. Particulars prepared September 2023. Strutt & Parker is a trading style of BNP Paribas Real Estate Advisory & Property Management UK Limited

Agents Note

Two areas of Japanese knotweed have been found in the grounds. The treatment plan is in process, ongoing and fully paid for; report available on request.

Planning

Prospective purchasers are advised that they must make their own enquiries of the Local Planning Authority.

Directions

From Strutt & Parker's Haslemere office, turn onto Petworth Road and after just over a quarter of a mile, turn right onto Haste Hill and continue straight ahead into Tennysons Lane. Follow for 1.3 miles and on the apex of the left-hand hairpin bend go straight ahead through white gates towards Aldworth House. After about 80 metres, turn right onto a track that winds through woodland for 0.25 miles to Foxholes.

General

Local Authority: Chichester District Council
Services: Mains electricity, private water and drainage. (Please note the drainage may not be compliant). Oil fired central heating.
Council Tax: Band H
Tenure: Freehold
Guide Price: £1,750,000

Haslemere

6 Charter Walk, Haslemere, Surrey GU27 2AD
01428 661077

haslemere@struttandparker.com
struttandparker.com

@struttandparker

/struttandparker

Over 45 offices across England and Scotland, including Prime Central London



For the finer things in property.

