



Building Plot, The Ridgeway, Cuffley

For the finer things in property.



Building Plot, The Ridgeway, Cuffley EN6 4AX

Development opportunity with planning permission

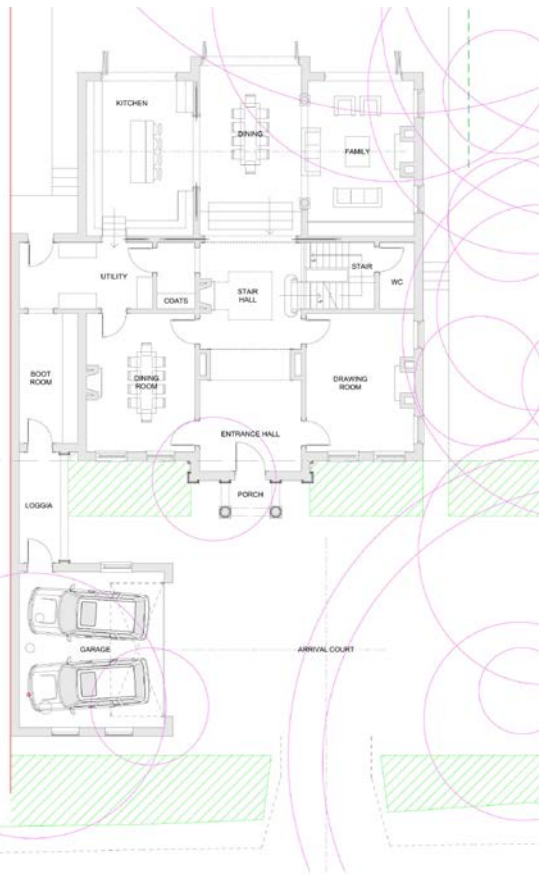
The property

A rare opportunity to acquire land on The Ridgeway Cuffley, one of the most prestigious roads in Hertfordshire. This stunning neo-Georgian design offers over 8,000 Sq ft. with reception rooms, bedroom suits and leisure complex with pool.

The design on the ground floor shows an impressive entrance hall, drawing room, dining room kitchen with separate breakfast room and a family room. It also has a useful boot room, guest cloakroom, coat cupboard and loggia connecting the house to the double garage.

On the first floor, there is the principal bedroom and three further bedroom suites. The second floor has a further bedroom suite, a study and a games/cinema room.

The lower ground floor offers a leisure complex complete with a 12-metre swimming pool, gym, plant room, changing room with shower and WC facilities and a lounge area for relaxation.



Cuffley

Sopers House, Sopers Rd, Cuffley, Potters Bar EN6 4RY

01707 524355

stalbans@struttandparker.com
struttandparker.com

[@struttandparker](#)

[/struttandparker](#)

Over 50 offices across England and Scotland,
including Prime Central London

IMPORTANT NOTICE: Strutt & Parker gives notice that: 1. These particulars do not constitute an offer or contract or part thereof. 2. All descriptions, photographs and plans are for guidance only and should not be relied upon as statements or representations of fact. All measurements are approximate and not necessarily to scale. Any prospective purchaser must satisfy themselves of the correctness of the information within the particulars by inspection or otherwise. 3. Strutt & Parker does not have any authority to give any representations or warranties whatsoever in relation to this property (including but not limited to planning/building regulations), nor can it enter into any contract on behalf of the Vendor. 4. Strutt & Parker does not accept responsibility for any expenses incurred by prospective purchasers in inspecting properties which have been sold, let or withdrawn. 5. We are able to refer you to SPF Private Clients Limited ("SPF") for mortgage broking services, and to Alexander James Interiors ("AJI"), an interior design service. Should you decide to use the services of SPF, we will receive a referral fee from them of 25% of the aggregate of the fee paid to them by you for the arrangement of a mortgage and any fee received by them from the product provider. Should you decide to use the services of AJI, we will receive a referral fee of 10% of the net income received by AJI for the services they provide to you. 6. If there is anything of particular importance to you, please contact this office and Strutt & Parker will try to have the information checked for you. Photographs taken May 2024. Particulars prepared May 2024. Strutt & Parker is a trading style of BNP Paribas Real Estate Advisory & Property Management UK Limited.



For the finer things in property.

