



Foliejon Cottage  
Winkfield Street, Maidens Green, Berkshire

For the finer things in property.

**STRUTT  
& PARKER**

BNP PARIBAS GROUP 

# Foliejon Cottage

## Winkfield Street

### Maidens Green

### Berkshire SL4 4QT

A captivating Grade II listed detached family house, in an enviable village location

M4 (Jct 8/9) 6.4 miles, M3 (Jct 3) 7.3 miles, M25 (Jct 12 (10 miles), Ascot High Street 4 miles, Windsor town centre 5.7 miles, Maidenhead 7.5 miles, Heathrow Airport (T5) 15 miles, Central London 29.5

Reception hall | Drawing room | Dining room  
Snug | Kitchen/breakfast room | Walk-in refrigerator | Utility room | Cloakroom | Principal bedroom with en suite shower room | 5 Further bedrooms | 7th Bedroom/dressing room  
Family bathroom | Family shower room  
Separate WC | Loggia | Gardens | Double garage with adjoining office and shed | Ample parking  
Spacious garden room/gym | Boiler room  
Gardener's WC | About three quarters of an acre

### The property

Dating back to 1606, Foliejon Cottage is a quintessential Grade II listed period house offering the rare opportunity for those seeking a traditional property bursting with character. In addition to the main house, there is a separate office with its own gas fireplace that would suit those wishing to work from home, and a large detached garden room, also with a fireplace, that is currently utilised as a gym. The delightful gardens provide an ideal setting for the property and extreme care and attention to detail is evident throughout the house, creating a most appealing and fascinating family home.

The house is arranged to provide adaptable accommodation arranged over two levels and boasts many period and interesting features

including exposed beams, leaded Crittal windows, fireplaces, carved doors and joinery, and the original and fully working butler/servants bell display box. The ground floor is entered via a welcoming reception hall that opens into a remarkable drawing room with a Stovax multi-fuel stove, an alcove with carved wooden panelling and shelving, and a glazed door opening into a loggia. This covered area provides the perfect space for dining and entertaining, being sheltered on three sides, and incorporating a glazed wall. The dining room is equally as impressive, featuring a stone fireplace with Stovax multi-fuel stove, and is ideal for more formal occasions.

The adjoining spacious kitchen/breakfast room suits a modern lifestyle and boasts a marble floor with under-floor heating and unusually, a superb Norcool walk-in refrigerator. The kitchen has been beautifully fitted with a comprehensive range of units, granite worksurfaces, a double Butler sink unit, a Lacanche range cooker and integrated appliances; there is ample space for a breakfast table, perfect informal dining. A scullery area, fitted to echo the style of the kitchen, including a double butler sink, features an integrated Siemens dishwasher and a warming drawer. A fitted utility room, also with marble flooring, has space for appliances. The ground floor further comprises a cosy dual aspect snug with a gas fireplace, and a cloakroom.



Situated on the first floor is the striking principal bedroom with a beamed vaulted ceiling, feature fireplace, and a carved oak door leading to an en suite shower room. This floor is host to six further well-proportioned bedrooms (one of which is currently being utilised as a dressing room), a family bathroom, family shower room, and a useful separate WC.

### Outside

Set within landscaped gardens, the property is approached over a gravelled driveway providing parking for multiple vehicles. A detached brick-built building houses a double garage and a home office. The well-maintained landscaped garden surrounds the property on all sides and is laid mainly to level lawn with numerous flowerbeds and various seating areas and terraces that provide ideal entertaining and al fresco dining space. A spacious garden room/ gym is discreetly positioned away from the house.

### Location

Foliejon Cottage enjoy a semi-rural setting between the pretty hamlet of Maidens Green and Winkfield Village, close to Windsor Forest. It is well placed for access to London via the motorway network and by rail. Ascot, Windsor and Maidenhead provide a good range of shopping and leisure facilities and the area also boasts some fine country pubs and restaurants and it is worth noting that the well-regarded Winning Post is just 350 yards from the property.

The area offers a wide range of sporting facilities including horse riding and polo in Windsor Great Park, horse racing at Ascot and Windsor, and golf at Sunningdale, The Royal Berkshire and Wentworth, to name a few. Keen walkers can enjoy the renowned three-mile Long Walk leading from Windsor Castle to the impressive Copper Horse statue together with spectacular parks including Windsor Great Park with around 4,800 acres to explore. The property is also well located for excellent schools, in both the state and independent









## Directions

With Strutt & Parker's Ascot office on your left, continue along the High Street (A329) to a mini-roundabout and take the first exit onto Winkfield Road (A330). Follow the road and upon reaching the dual mini-roundabouts, proceed straight over to rejoin the Winkfield Road (A330). After about a mile turn left onto Lovel Road (A330), continue to a T-junction where you will turn left and after 1.7 miles, turn right Winkfield Street. Foliejon Cottage is the last property on the left-hand side.

What3Words: pies.cheers.venues

## General

**Local Authority:** Bracknell Forest Council – Tel. 01344 352000

**Services:** Mains electricity, gas, water and drainage

**Council Tax:** Band G

**Tenure:** Freehold

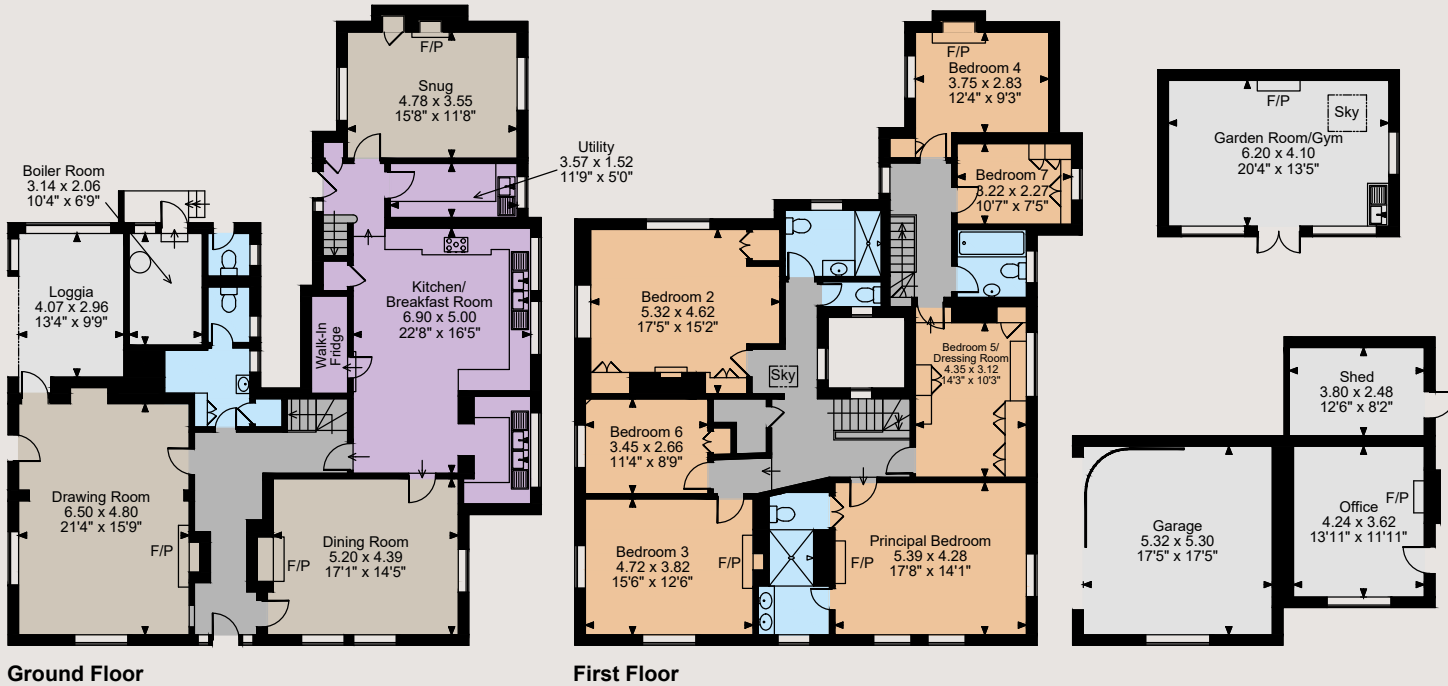
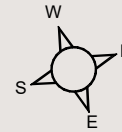
**Guide Price:** £2,450,000



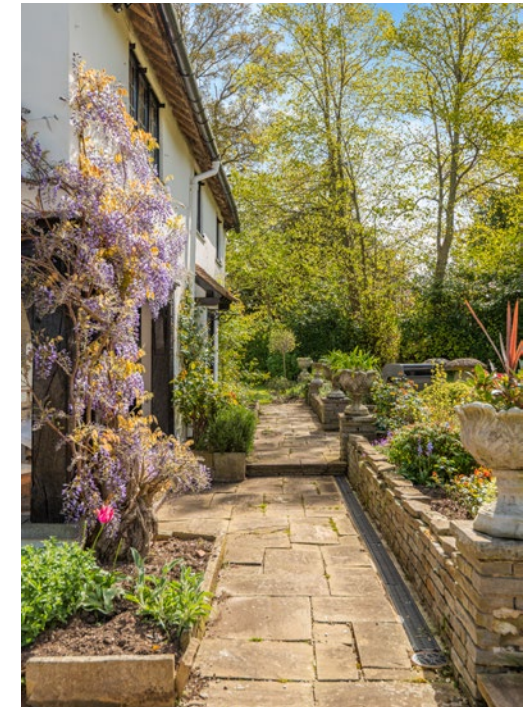


Floorplans

House internal area 3,305 sq ft (307 sq m)  
 Summerhouse/gym internal area 274 sq ft (25 sq m)  
 Office & shed internal area 274 sq ft (25 sq m)  
 Boiler room & Loggia Internal area 208 sq ft (19 sq m)  
 Garage internal area 303 sq ft (28 sq m)  
 Total Internal Area 4,364 sq ft (404 sq m)  
 (Quoted Area Excludes 'External WC')



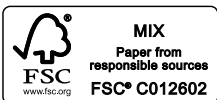
The position & size of doors, windows, appliances and other features are approximate only.  
 © ehous. Unauthorised reproduction prohibited. Drawing ref. dig/8595654/SS



**Ascot**  
 37 High Street, Ascot, Berkshire SL5 7HG  
**01344 636960**  
 ascot@struttandparker.com  
 struttandparker.com



Over 50 offices across England and Scotland,  
 including Prime Central London



For the finer things in property.



**IMPORTANT NOTICE:** Strutt & Parker gives notice that: 1. These particulars do not constitute an offer or contract or part thereof. 2. All descriptions, photographs and plans are for guidance only and should not be relied upon as statements or representations of fact. All measurements are approximate and not necessarily to scale. Any prospective purchaser must satisfy themselves of the correctness of the information within the particulars by inspection or otherwise. 3. Strutt & Parker does not have any authority to give any representations or warranties whatsoever in relation to this property (including but not limited to planning/building regulations), nor can it enter into any contract on behalf of the Vendor. 4. Strutt & Parker does not accept responsibility for any expenses incurred by prospective purchasers in inspecting properties which have been sold, let or withdrawn. 5. We are able to refer you to SPF Private Clients Limited ("SPF") for mortgage broking services, and to Alexander James Interiors ("AJI"), an interior design service. Should you decide to use the services of SPF, we will receive a referral fee from them of 25% of the aggregate of the fee paid to them by you for the arrangement of a mortgage and any fee received by them from the product provider. Should you decide to use the services of AJI, we will receive a referral fee of 10% of the net income received by AJI for the services they provide to you. 6. If there is anything of particular importance to you, please contact this office and Strutt & Parker will try to have the information checked for you. Photographs taken April 2024. Particulars prepared April 2024. Strutt & Parker is a trading style of BNP Paribas Real Estate Advisory & Property Management UK Limited