

# PENTHOUSE

THE TELEVISION CENTRE, W12





Stunning four bedroom Penthouse  
for Sale at Television Centre



Step into unparalleled luxury with this exceptional penthouse, located in the iconic, grade II listed Television Centre in the heart of London. Offering a sophisticated urban living experience, this expansive residence is a masterpiece of modern design, boasting breath-taking panoramic views of the London skyline.

The sprawling open-plan layout with over 2,500 square feet of space, features high ceilings and a sleek, contemporary design, complete with a state-of-the-art kitchen featuring premium appliances and custom finishes. Four luxurious double bedrooms, two en-suite bathrooms, plus a guest cloakroom. The apartment also features a wonderful South facing terrace measuring in excess of 900sqft and two underground parking spaces.

The Television Centre benefits from extensive residents' amenities include 24-hour concierge, cinema room, a gym and pool by Soho House Health Club and private gardens.

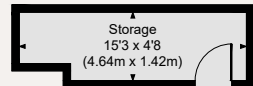
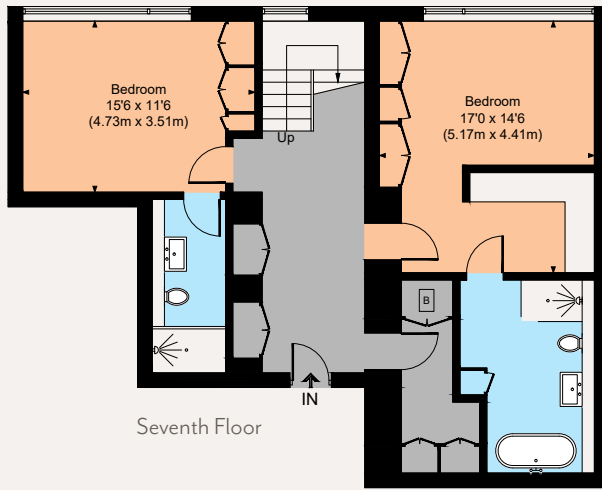
## LOCATION

Television Centre is served by three local stations. White City on the Central line provides transport to Bond Street in 12 minutes, Bank in 22 minutes and Canary Wharf in 32 minutes. Television Centre will be only a short journey from Crossrail, accessible at Ealing Broadway, Paddington and Bond Street. Wood Lane on the Circle and Hammersmith & City lines offers links to Paddington for mainline and Heathrow Express services in 7 minutes and St Pancras International for mainline and Eurostar services in 20 minutes.

## ACCOMMODATION

- | Penthouse
- | Reception / Kitchen
- | Four bedrooms
- | Two en-suite bathroom
- | Cloakroom
- | Utility room
- | Roof Terrace
- | Two Parking spaces
- | EPC rating B





(Not Shown In Actual Location / Orientation)



## GROSS INTERNAL AREA (APPROX.)

232 sq m / 2,497 sq ft

Storage 6.1 sq m / 66 sq ft

Total 238.1 sq m / 2,563 sq ft

### IMPORTANT NOTICE

Strutt & Parker gives notice that: 1. These particulars do not constitute an offer or contract or part thereof. 2. All descriptions, photographs and plans are for guidance only and should not be relied upon as statements or representations of fact. All measurements are approximate and not necessarily to scale. Any prospective purchaser must satisfy themselves of the correctness of the information within the particulars by inspection or otherwise. 3. Strutt & Parker does not have any authority to give any representations or warranties whatsoever in relation to this property (including but not limited to planning/building regulations), nor can it enter into any contract on behalf of the Vendor. 4. Strutt & Parker does not accept responsibility for any expenses incurred by prospective purchasers in inspecting properties which have been sold, let or withdrawn. 5. We are able to refer you to SPF Private Clients Limited ("SPF") for mortgage broking services, and to Alexander James Interiors ("AJI"), an interior design service. Should you decide to use the services of SPF, we will receive a referral fee from them of 25% of the aggregate of the fee paid to them by you for the arrangement of a mortgage and any fee received by them from the product provider. Should you decide to use the services of AJI, we will receive a referral fee of 10% of the net income received by AJI for the services they provide to you. 6. If there is anything of particular importance to you, please contact this office and Strutt & Parker will try to have the information checked for you. Photographs taken November 2024. Particulars prepared November 2024. Strutt & Parker is a trading style of BNP Paribas Real Estate Advisory & Property Management UK Limited.



## TERMS

Tenure: Leasehold of 975 years commencing 29/11/2017

Service charge: £28,429pa

Council Tax: Band H

Local Authority: Hammersmith and Fulham

Price: £3,250,000

## Notting Hill

303 Westbourne Grove, London, W11 2QA

020 7221 1111

nottinghill@struttandparker.com

For the finer things in property.



BNP PARIBAS GROUP